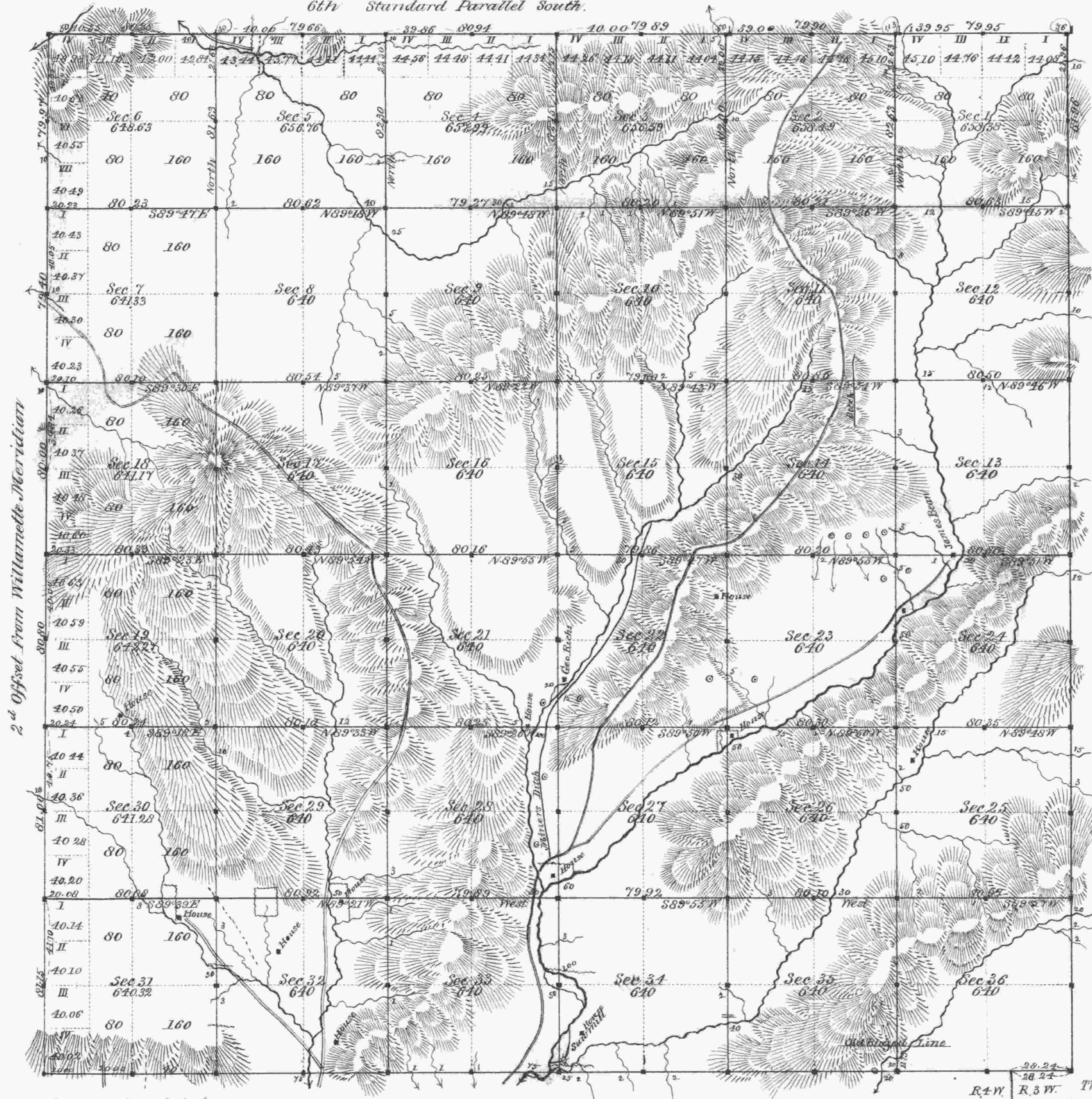


Township No. 28 South Range No. 4 West Willamette Meridian, Oregon.

6th Standard Parallel South.



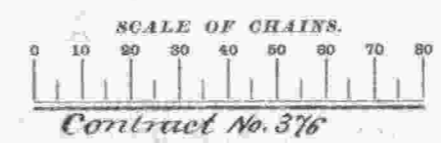
2<sup>d</sup> Offset from Willamette Meridian

General Description  
 The quality of lands in this Township are greatly varied, the small valleys along the creeks being 1<sup>st</sup> class; the bench and gentle slopes 2<sup>d</sup> while the mountain tops and steep hills are generally 3<sup>d</sup> rate, It is well timbered, chiefly Fir, Cedar, Oak, Laurel, Pine, Maple, and Ash.  
 Gold is found in many localities all over the Township, and the mines are being profitably worked in many localities

Aug 23 1881

Surveys Designated.	By Whom Surveyed.	Date of Contract.	Amount of Surveys.			When Surveyed.	Magnetic Declination.
			Acres.	Chains.	Links.		
Tr. Lines S.E.	Wm H. Byars	Jan. 22, 1881				1881	19° E
Re-tracing N.W.	do. do. do.	do. do. do.	12	02	94	1881	
Subdivisions	do. do. do.	do. do. do.	60	18	68	April 1881	
Trt on Std. Par'l.	do. do. do.	do. do. do.		2	79.		

Total number of Acres, 23,143.21



The above Map of the Subdivisional lines of Township No. 28 South Range No. 4 West Willamette Meridian, Oregon, is strictly conformable to the original Field Notes of the survey thereof on file in this Office, which have been examined and approved.  
 U. S. Surveyor-General's Office,  
 Portland, Oregon,  
 Aug. 11, 1881  
*James S. Tolman*  
 Surveyor-General of Oregon.