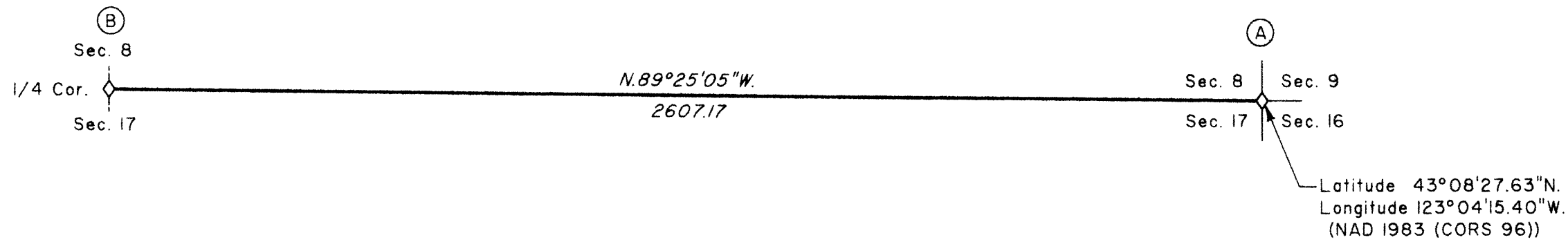


FILED

Date: 1/29/2013 By: JC
This survey consists of:
Map: VOL. 58 PAGE
Narrative: 22949
Corner Rpt: THIS PLAT REPRESENTS THE ENTIRE RECORD OF THE DEPENDENT RESURVEY
DOUGLAS COUNTY SURVEYOR

TOWNSHIP 28 SOUTH, RANGE 3 WEST, OF THE WILLAMETTE MERIDIAN, OREGON

RETRACEMENT



Ⓐ The cor. of secs. 8, 9, 16, and 17, perpetuated by Byron, Deputy County Surveyor, in 1957, subsequently perpetuated by the Douglas County Surveyor's Office in 1966, and further perpetuated by Edwards, PLS 2339, in 2000, monumented with an iron post, 1 1/4 ins. diam., firmly set, projecting 11 ins. above ground, with brass cap mkd.

Ⓑ The 1/4 sec. cor. of secs. 8 and 17, perpetuated by Byron, Deputy County Surveyor, in 1962, subsequently perpetuated by Lang, PLS 2295, in 2001, monumented with an iron post, 1 1/4 ins. diam., firmly set, projecting 12 ins. above the collar of stone, with brass cap mkd.

COUNTY SURVEYORS
T 28 S
S 8 | S 9
S 17 | S 16
R 3 W
OFFICE 1957

COUNTY SURVEYORS OFFICE
T 28 S R 3 W
S 8
S 17 1/4
1962

from which the remains of original bearing trees

- A decayed hemlock root crown, size indeterminate, bears N. 63° E., 29.7 ft. dist., with no marks visible.
- A cedar, 40 ins. diam., bears N. 39 1/4° W., 42.9 ft. dist., with fragmentary scribe marks visible on partially healed blaze and an additional healed blaze (Record N. 37° W., rescribed by Byron).

and the remains of a bearing tree mkd. by Byron

- A roothole bears S. 5° E., 13.2 ft. dist., downhill of which is a fallen, decayed, sawed hemlock trunk segment, size indeterminate, with no marks visible.

and bearing trees mkd. by Edwards

- A hemlock, 8 ins. diam., bears N. 38° E., 10.4 ft. dist., with scribe marks S9 BT visible on a partially healed blaze.
- A hemlock, 6 ins. diam., bears S. 69 3/4° E., 15.1 ft. dist., with scribe marks S16 BT visible on a partially healed blaze.
- A hemlock, 8 ins. diam., bears S. 37 1/2° W., 7.2 ft. dist., with fragmentary scribe marks visible on a partially healed blaze.

Corner is located 40 ft. N. of a gravel road, 13 ft. wide, bears N. 65° W. and S. 65° E., and 90 ft. E. of the same road, 13 ft. wide, bears N. 50° W. and S. 60° E., in a curve.

from which the remains of an original bearing tree

- A hemlock snag, 17 ins. diam., bears N. 9° E., 6.6 ft. dist., with a healed blaze.

and bearing trees by Lang

- A fir, 15 ins. diam., bears S. 80 3/4° E., 15.1 ft. dist., with a healed double blaze.
- A hemlock, 11 ins. diam., bears S. 75 3/4° W., 32.1 ft. dist., with scribe marks 1/4 S17 on upper and BT visible on lower partially healed double blaze.
- A hemlock, 19 ins. diam., bears N. 57 3/4° W., 24.5 ft. dist., with scribe marks 1/4 S8 on upper and BT visible on lower partially healed blazes.

Corner is located 30 ft. E. of a creek, 2 ft. wide, course N. 40° W.

LEGEND

◊ Original corner previously remonumented

This plat constitutes the entire record of the retracement of a portion of the subdivisional lines, Township 28 South, Range 3 West, Willamette Meridian, Oregon.

The history of official surveys pertaining to this retracement is as follows:

In 1908, William N. Gibb, U.S. Deputy Surveyor, surveyed a portion of the subdivisional lines, as shown on the plat of official survey approved October 17, 1911.

The following local surveys filed in the Douglas County Surveyor's Office are referred to in subsequent corner descriptions and are referenced by the surveyor's last name, official title or Professional Land Surveyor (PLS) No., and year.

Date	Name	Registration Number	File Number
1957	James W. Byron, Deputy Co. Surveyor		CS 49/22
1962	James W. Byron, Deputy Co. Surveyor		CS 52/126
1966	Douglas County Surveyor's Office		CS 52/126
2000	David A. Edwards	PLS 2339	CS 65/29-10
2001	Gregory D. Lang	PLS 2295	CS 65/37-14E
2001	Gregory D. Lang	PLS 2295	M 138-46

The direction of the line is based on the true meridian as determined by direct solar observation and carried forward by sustained angulation using conventional survey techniques. All measurements along the line were derived through the use of GPS and conventional survey techniques. Measured distances and directions have been adjusted by computer software that incorporates a least squares adjustment routine. The adjusted mean bearing and mean horizontal ground elevation distance are reported to the nearest second and 0.01 foot.

The lines of the official original survey were retraced and search was made for all corners, lines, other calls of the record, and, where available, collateral evidence of local surveys and corners. Identified corners were perpetuated in their original positions. The retracement data were thoroughly verified and only the true line field data are given hereon.

Each new bearing tree has a 2 1/2 inch x 1/4 inch magnetic nail (Mag Nail) driven at the base on right side center, unless otherwise noted in the corner description.

Only those lines bounding Federal interest land were blazed.

The geographic position shown hereon was determined by a tie from a temporary GPS control point, utilizing dual frequency, carrier phase GPS receivers, and processed using the National Geodetic Survey's Online Positioning User Service (OPUS).

The survey was executed in accordance with the specification set forth in the Manual of Surveying Instructions (2009), and the special instructions approved April 28, 2010, for Group No. 2500, Administrative File No. III, Oregon, by Kenneth W. Saveland, Cadastral Surveyor, beginning August 16, 2011, and completed September 1, 2011. He was assisted by Robert NMI Durning and Thomas A. Hollamon, Surveying Technicians.

UNITED STATES DEPARTMENT OF THE INTERIOR
BUREAU OF LAND MANAGEMENT

Portland, Oregon

The survey represented by this plat, having been correctly executed in accordance with the requirements of law and the regulations of this Bureau, is hereby accepted.

For the Director

Mary J. M. Hartzel

Chief Cadastral Surveyor of Oregon

October 25, 2012

Date



Scale in Feet

OFFICIALLY FILED: 1/19/2013

Kenneth W. Saveland
Cadastral Surveyor

October 15, 2012
Date