

FILED
Date: 7/14/2011 By: JC
This survey consists of:
Map: BLM RESURVEY
Narrative: VOL. 56 PGS
Corner Rpt: 22289-22308

TOWNSHIP 28 SOUTH, RANGE 3 WEST, OF THE WILLAMETTE MERIDIAN, OREGON

DEPENDENT RESURVEY AND SUBDIVISION OF SECTION 23

DOUGLAS COUNTY
SURVEYOR

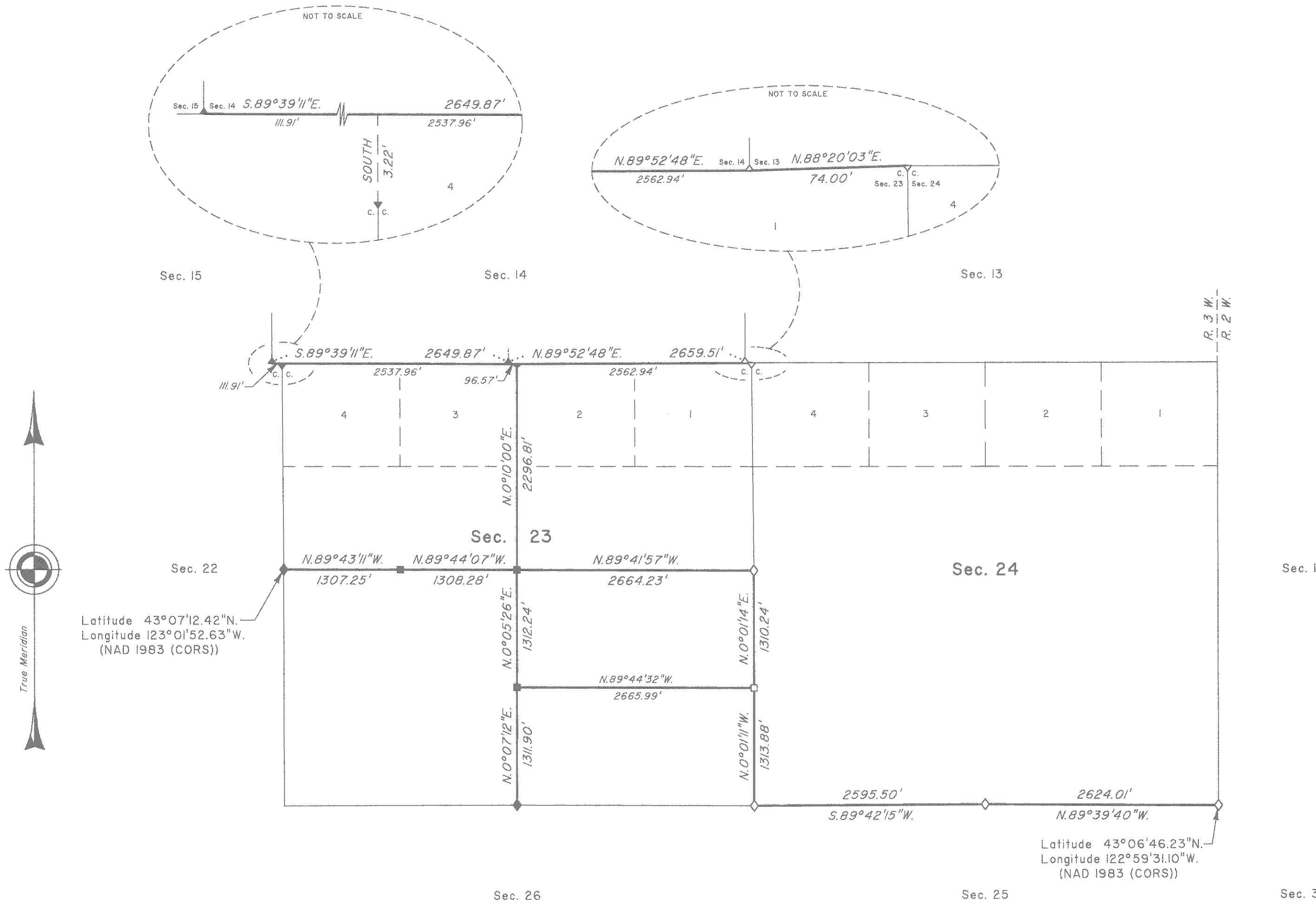
A history of surveys is contained in the field notes.

This plat represents the dependent resurvey of a portion of the subdivisional lines, designed to restore the corners in their true original locations according to the best available evidence, and the subdivision of section 23, in T. 28 S., R. 3 W., Willamette Meridian, Oregon.

The official lottings and areas are as shown on the plat approved October 17, 1911, and accepted April 30, 1912.

This survey was executed by Kenneth W. Saveland, Cadastral Surveyor, beginning October 1, 2009 and completed November 10, 2009, pursuant to Special Instructions dated April 23, 2009, for Group Number 2274, Oregon.

OFFICIALLY FILED: 7/14/2011



LEGEND	
◇	Original corner previously remonumented
◆	Original corner remonumented this survey
□	Corner previously established
■	Corner previously established; remonumented this survey
●	Corner reestablished this survey

UNITED STATES DEPARTMENT OF THE INTERIOR
BUREAU OF LAND MANAGEMENT

Portland, Oregon

This plat is strictly conformable to the approved field notes, and the survey, having been correctly executed in accordance with the requirements of law and the regulations of this Bureau, is hereby accepted.

For the Director

John E. Saveland, A.C.S.
Chief Cadastral Surveyor of Oregon

March 24, 2011
Date

