

TOWNSHIP 28 SOUTH, RANGE 3 WEST, OF THE WILLAMETTE MERIDIAN, OREGON

DOUGLAS COUNTY
SURVEYOR

This plat represents the entire survey record of the retracement of a portion of the subdivisional lines, T. 28 S., R. 3 W., Willamette Meridian, Oregon.

The history of surveys pertaining to this retracement is as follows:

In 1882, Samuel C. Flint, U.S. Deputy Surveyor, surveyed a portion of the subdivisional lines.

In 1910, William N. Gibb, U.S. Deputy Surveyor, surveyed the remainder of the subdivisional lines.

The survey was executed in accordance with the specification set forth in the Manual of Surveying Instructions, 1973. The retracement data were thoroughly verified and only the true line data is given hereon. Only those lines bounding or crossing public lands were blazed. The directions of the lines were determined by direct solar observations, carried forward by sustained angulation, and refer to the true meridian.

An analysis of the unadjusted field data assured a closure not exceeding 1:4000 in error. The measured distance and direction have been adjusted by computer software that incorporates a least squares adjustment routine. The adjusted bearing and distance are reported to the nearest second and 0.01 foot.

The geodetic position shown hereon was determined by differentially corrected carrier phase GPS receivers, relative to the National Spatial Reference System.

Each new bearing tree has a 2 1/2 inch x 1/4 inch magnetic nail (Mag Nail) driven at the base on right side center.

This retracement was executed by A. Bert Skeesick, Cadastral Surveyor, beginning May 18, 2006 and completed June 6, 2006; pursuant to Assignment Instructions dated May 15, 2006, under Special Instructions for Group Number 2100, Oregon, dated and approved March 8, 2004, and Assignment Instructions dated June 1, 2006, under Special Instructions for Group Number 2000, Oregon, dated February 22, 2002 and approved; and Instructions to Cancel Group 2100 and Reassign to Group 2300, dated October 12, 2007, under Group Number 2300, Oregon, Administrative File Number 0601, dated March 16, 2007, approved March 21, 2007. He was assisted by Dameon P. Barrows and Robert Durning, Surveying Technicians.

LEGEND

◊ Original corner previously remonumented

UNITED STATES DEPARTMENT OF THE INTERIOR
BUREAU OF LAND MANAGEMENT

Portland, Oregon

The retracement represented by this plat, having been correctly executed in accordance with the requirements of law and the regulations of this Bureau, is hereby accepted.

For the Director

Mary J. M. Hunt

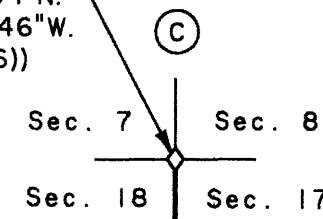
Chief Cadastral Surveyor of Oregon

March 17, 2011

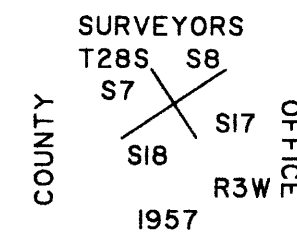
Date

RETRACEMENT

Latitude 43°08'28.04"N.
Longitude 123°05'25.46"W.
(NAD 1983 (CORS 96))



(C) The cor. of secs. 7, 8, 17, and 18, remonumented by Byron, Douglas County Surveyors Office, in 1957, recorded in the Douglas County Surveyors Record of Government Corners Renewed, T. 28 S., R. 3 W., Index No. 7, rehabilitated by Gary L. Langlitz, Douglas County Surveyors Office, in 1975, recorded in the Douglas County Surveyors Record of Government Corners Renewed, T. 28 S., R. 3 W., Index No. 132, and perpetuated by Gregory D. Lang, Oregon Professional Land Surveyor No. 2295, in 2001, recorded in the Douglas County Surveyors Record of Government Corners Renewed, T. 28 S., R. 3 W., Index No. 178, monumented with an iron post, 1 1/4 ins. diam., firmly set, projecting 11 ins. above ground, with brass cap mkd.



from which the remains of the original bearing trees

A sawed decayed fir stump, 30 ins. diam., bears S. 68 1/4° E., 25.4 ft. dist., with axe marks visible. (Record S. 65° E., 23.8 ft.)

A decayed fir stump, 30 ins. diam., bears S. 58° W., 10.6 ft. dist., with axe marks visible.

and bearing tree mkd. by Byron

A cedar, 32 ins. diam., bears N. 35 3/4° E., 29.5 ft. dist., with a healed blaze.

and bearing tree mkd. by Langlitz

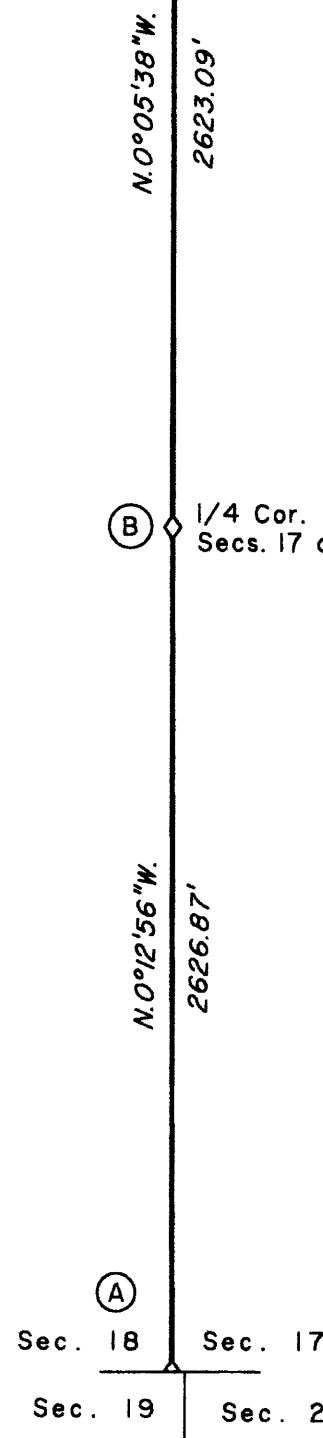
A fir, 23 ins. diam., bears S. 11° E., 5.6 ft. dist., with a healed blaze.

A fir, 20 ins. diam., bears S. 35 1/2° W., 10.5 ft. dist., with a healed blaze.

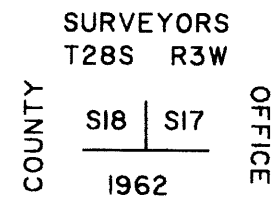
A dead fir, 14 ins. diam., bears N. 83 3/4° W., 12.4 ft. dist., with a healed blaze.

and new bearing tree

A fir, 9 ins. diam., bears N. 65° W., 14.7 ft. dist., mkd. T28S R3W S7 BT.



(A) The cor. of secs. 17 and 18 only, remonumented by Byron, Douglas County Surveyors Office, in 1962, recorded in the Douglas County Surveyors Record of Government Corners Renewed, T. 28 S., R. 3 W., Index No. 35, monumented with an iron post, 1 1/4 ins. diam., firmly set, projecting 12 ins. above ground, with brass cap mkd.



from which the remains of the original bearing trees

A burnt fir snag, 56 ins. diam., bears S. 20° E., 17.2 ft. dist., with no marks visible.

A sawed burnt fir stump, 19 ins. diam., bears S. 24 1/4° W., 16.8 ft. dist., with no marks visible. (Record S. 30° W., 15.8 ft.)

A decayed fir stump, size indeterminate, bears N. 60° W., 5.9 ft. dist., with no marks visible.

and remains of a bearing tree mkd. by Byron

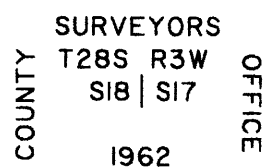
A decayed fir snag, 16 ins. diam., bears N. 57 1/2° E., 21.5 ft. dist., with a healed blaze.

and new accessories

A rebar, 30 ins. long, 5/8 in. diam., driven 30 ins. in the ground for a reference monument, bears N. 46° 54' 26" E., 8.4 ft. dist., with alum. cap mkd. RM T28S R3W S17 8.4 FT TO COR 2006 and an arrow pointing to the corner.

A fir, 8 ins. diam., bears N. 9 1/4° W., 70.0 ft. dist., mkd. T28S R3W S18 BT.

(B) The 1/4 sec. cor. of secs. 17 and 18, remonumented by Byron, Douglas County Surveyors Office, in 1962, recorded in the Douglas County Surveyors Office, C.S. File No. 49/67, monumented with an iron post, 1 1/4 ins. diam., firmly set, projecting 11 ins. above ground, with brass cap mkd.



from which the original bearing trees

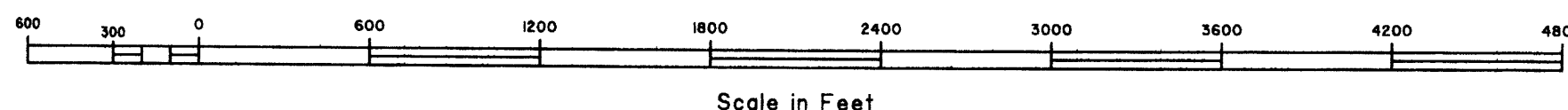
A cedar, 16 ins. diam., bears S. 49° E., 7.9 ft. dist., with a healed blaze.

A cedar, 18 ins. diam., bears N. 70° W., 27.7 ft. dist., with a healed blaze.

I, A. Bert Skeesick, Cadastral Surveyor, HEREBY CERTIFY upon honor, that in pursuance of Special Instructions bearing dates of the 22nd day of February, 2002, the 8th day of March, 2004, and the 16th day of March, 2007, I have retraced a portion of the subdivisional lines, Township 28 South, Range 3 West, Willamette Meridian, Oregon. Said retracement has been executed in strict conformity with said Special Instructions, the Manual of Instructions for the Survey of the Public Lands of the United States, 1973, and in specific manner described on this plat.

A. Bert Skeesick
Cadastral Surveyor

02/23/2011
Date



OFFICIALLY FILED: 5/17/2011