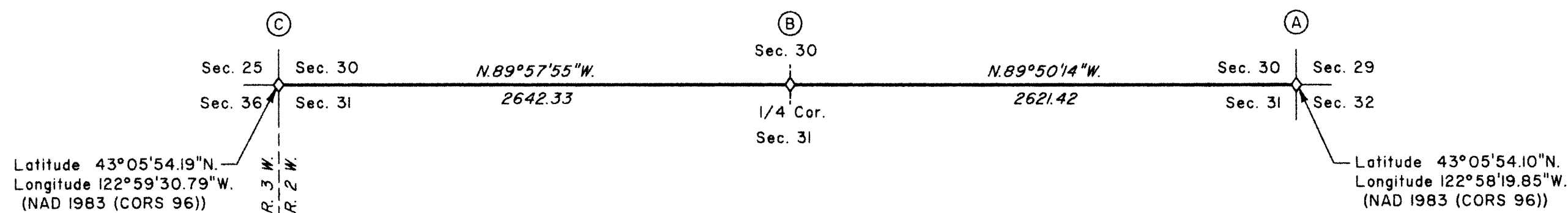


TOWNSHIP 28 SOUTH, RANGE 2 WEST, OF THE WILLAMETTE MERIDIAN, OREGON

RETRACEMENT



Latitude 43°05'54.19"N.
Longitude 122°59'30.79"W.
(NAD 1983 (CORS 96))

Latitude 43°05'54.10"N.
Longitude 122°58'19.85"W.
(NAD 1983 (CORS 96))

(A) The cor. of secs. 29, 30, 31, and 32, perpetuated by the Douglas County Surveyor's Office in 1968, monumented with an iron post, 1 1/4 ins. diam., firmly set, projecting 4 ins. above a collar of stone, with brass cap mkd.

COUNTY SURVEYORS OFFICE
T 28 S R 2 W
S 30 | S 29
S 31 | S 32
1968

from which the remains of original bearing trees

- A decayed fir stump, size indeterminate, bears N. 63° E., 99.0 ft. dist., with no marks visible on a decayed blaze.
- A decayed fir stump, size indeterminate, bears S. 69° E., 51.5 ft. dist., with scribe marks T28S R2W S32 BT visible on a partially healed blaze.
- A pine, 36 ins. diam., bears S. 34° W., 73.3 ft. dist., with a healed blaze.

and bearing trees mkd. by the Douglas County Surveyor's Office

- A fir, 17 ins. diam., bears N. 74° E., 22.5 ft. dist., with a healed double blaze.
- A hemlock, 13 ins. diam., bears S. 22 1/2° E., 10.9 ft. dist., with a healed double blaze.
- A fir, 15 ins. diam., bears S. 24 1/2° W., 15.2 ft. dist., with a healed double blaze.
- A fir, 15 ins. diam., bears N. 25 1/4° W., 16.9 ft. dist., with a healed double blaze.

(B) The 1/4 sec. cor. of secs. 30 and 31, perpetuated by Shaner, PLS 4906, in 1968, monumented with an iron post, 1 1/4 ins. diam., firmly set, projecting 10 ins. above a collar of stone, (alongside of which is the original unmarked basalt stone, 8 x 11 x 12 ins. (Record, 8 x 8 x 12 ins.)), with brass cap mkd.

T 28 S R 2 W
1/4 S 30
S 31
1968
ORE 4906

from which the remains of an original bearing tree

- A fir, 10 ins. diam., bears S. 6° E., 11.2 ft. dist., with scribe marks S31 BT visible on a partially healed blaze.
- and the remains of a bearing tree mkd. by Shaner
- A decayed pine snag, 27 ins. diam., bears N. 89 3/4° W., 11.0 ft. dist., with scribe marks 1/4 S30 T28S R2W visible on an open blaze.

and a new bearing tree

- A fir, 13 ins. diam., bears N. 64° E., 13.5 ft. dist., mkd. 1/4 S30 BT.
- Incorporate original stone in collar.
- Corner is located 120 ft. W. of a gravel road, 12 ft. wide, bears N. 10° W. and S. 20° E., in a curve.

(C) The cor. of secs. 29, 30, 31, and 36, on the W. bdy. of the Tp., perpetuated by Byron, Deputy County Surveyor, in 1962, monumented with an iron post, 1 1/4 ins. diam., firmly set, projecting 13 ins. above ground, with brass cap mkd.

COUNTY SURVEYORS OFFICE
T 28 S
R S 25 | S 30 R
3 | 2
W S 36 | S 31 W
1962

from which the remaining original bearing trees

- A fir, 30 ins. diam., bears N. 13 1/2° E., 20.5 ft. dist., with a healed blaze.
- A fir, 14 ins. diam., bears S. 15° W., 33.7 ft. dist., with a healed blaze. (Record 35.0 ft. dist.)
- A fir, 33 ins. diam., bears N. 60° W., 40.9 ft. dist., with a healed blaze. (Record, 27.7 ft. dist.)
- and the remains of a bearing tree mkd. by Byron
- A decayed fir stump, 7 ins. diam., bears S. 60 1/2° E., 11.2 ft. dist., with no marks visible.
- and a new bearing tree
- A fir, 10 ins. diam., bears S. 33° E., 39.9 ft. dist., mkd. T28S R2W S31 BT.
- Corner is located 155 ft. W. of a shallow draw, drains generally NW.

This plat constitutes the entire record of the retracement of a portion of the subdivisional lines, Township 28 South, Range 2 West, Willamette Meridian, Oregon.

The history of official surveys pertaining to this retracement is as follows:

In 1910, William N. Gibb, U.S. Deputy Surveyor, surveyed a portion of the west boundary and subdivisional lines, as shown on the official plat of survey approved October 17, 1911.

In 1910, William N. Gibb, U.S. Deputy Surveyor, surveyed a portion of the east boundary of T. 28 S., R. 3 W., as shown on the official plat of survey approved October 17, 1911.

The following local surveys filed in the Douglas County Surveyor's Office are referred to in subsequent corner descriptions and are referenced by the surveyor's last name, official title or Professional Land Surveyor (PLS) No., and year.

Date	Name	Registration Number	File Number
1962	James W. Byron, Deputy Co. Surveyor		CS 52/126
1968	Douglas County Surveyor's Office		CS 54/26-13
1968	Bruce A. Shaner PLS 4906		CS 55/74C

The directions of the lines are based on the true meridian as determined by direct solar observation and carried forward by sustained angulation using conventional survey techniques. All measurements along the lines were derived through the use of GPS and conventional survey techniques. Measured distances and directions have been adjusted by computer software that incorporates a least squares adjustment routine. The adjusted mean bearings and mean horizontal ground elevation distances are reported to the nearest second and 0.01 foot.

The lines of the official resurvey were retraced and search was made for all corners, lines, other calls of the record, and, where available, collateral evidence of local surveys and corners. Identified corners were perpetuated in their original positions. The retracement data were thoroughly verified and only the true line field data are given hereon.

Each new bearing tree has a 2 1/2 inch x 1/4 inch magnetic nail (Mag Nail) driven at the base on right side center, unless otherwise noted in the corner description.

Only those lines bounding Federal interest land were blazed.

The geographic positions shown hereon were determined by ties from temporary GPS control points, utilizing dual frequency, carrier phase GPS receivers, and processed using for control National Spatial Reference System Continuously Operating Reference Station (CORS) "DODSON BUTTE CORS ARP" and National Cooperative CORS Network Station "ROSEBURG COOP CORS ARP".

The survey was executed in accordance with the specification set forth in the Manual of Surveying Instructions (2009), and the special instructions approved April 28, 2010, for Group No. 2500, Administrative File No. 1110, Oregon, by Kenneth W. Saveland, Cadastral Surveyor, beginning August 10, 2011, and completed August 31, 2011. He was assisted by Nathan C. Erickson, Cadastral Surveyor, and Robert NMI Durning and Thomas A. Hollamon, Surveying Technicians.

UNITED STATES DEPARTMENT OF THE INTERIOR
BUREAU OF LAND MANAGEMENT

Portland, Oregon

LEGEND
◊ Original corner previously remonumented

The survey represented by this plat, having been correctly executed in accordance with the requirements of law and the regulations of this Bureau, is hereby accepted.

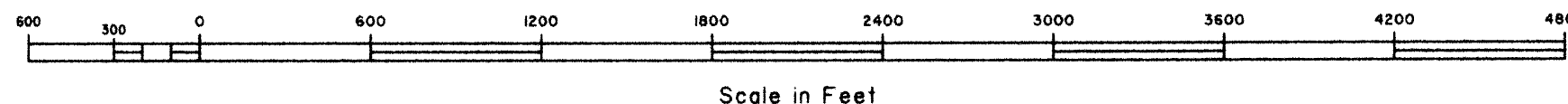
For the Director

Mary J. M. Hault
Chief Cadastral Surveyor of Oregon

I, Kenneth W. Saveland, Cadastral Surveyor, HEREBY CERTIFY upon honor, that in pursuance of special instructions bearing the approval date of the 28th day of April, 2010, and assignment instructions bearing the date of the 3rd day of August, 2011, I have retraced a portion of the subdivisional lines, Township 28 South, Range 2 West, Willamette Meridian, Oregon, which is represented upon this plat as having been executed by me and under my direction; and that said survey has been made in strict conformity with said special instructions, the Manual of Surveying Instructions, and in the specific manner described on this plat.

Kenneth W. Saveland
Cadastral Surveyor

August 29, 2012
Date



September 7, 2012
Date

OFFICIALLY FILED: 10/22/2012