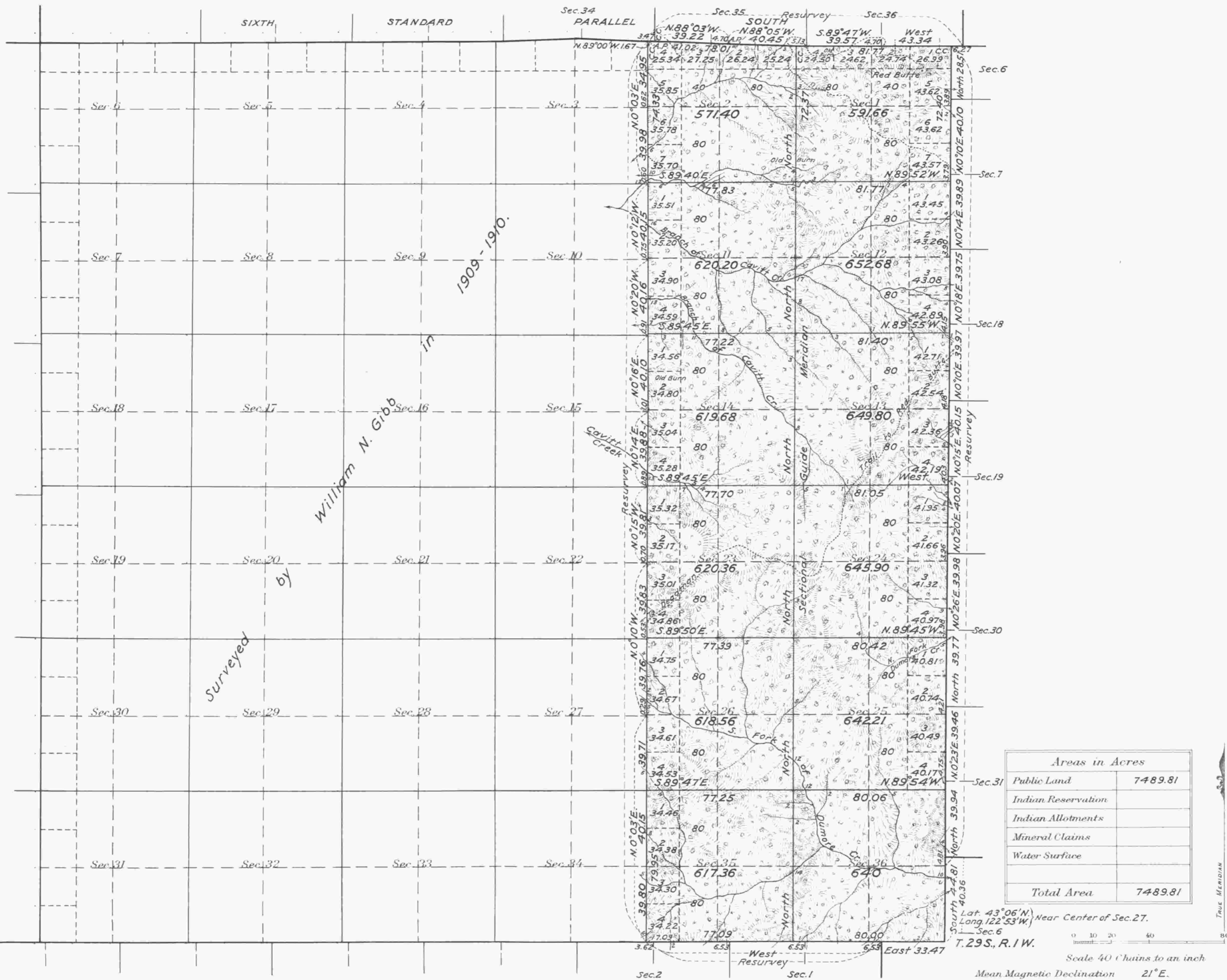


Township No. 28 South, Range No. 2 West of the Willamette Meridian, Oregon.



Surveys Designated	By Whom Surveyed	Group			Amount of Surveys			When Surveyed	
		No.	Date		Mls.	chs.	lks.	Begun	Completed
Portion of 6th Stan. Par. S. (Resur.)	Fred Mensch USCE	90	June 7, 1922	2	6	05	June 29, 1923	July 2, 1923	
" " E. & S. Tp. Bdr's. "	" " " "	"	" " "	6	76	02	" 5, "	June 30, "	
" " Subdivisions "	" " " "	"	" " "	5	74	28	" 4, "	July 2, "	
Subdivisions & Connections	" " " "	"	" " "	16	24	73	" 5 "	" " "	
6th Stan. Par. S. by S.C. Flint under Contract No. 453 in 1882. Retracement by Morris Wygant under Contract No. 779 in 1911.									
E. Tp. Bdr's. by Homer D. Angell " " " 746 " 1902. and Fred Mensch under Group 90 in 1922.									
S. " " " Wm. N. Gibb under Contract No. 783 in 1909 - E.F. Strickler under Group 36 in 1917 & Fred Mensch under Group 90 in 1922									
Portion of Subdivisions by Wm. N. Gibb under Contract No. 783 in 1909-1910.									

The above map of Township No. 28 South, Range No. 2 West of the Willamette Meridian Oregon is strictly conformable to the field notes of the survey thereof on file in this office, which have been examined and approved.

U. S. Surveyor General's Office.
 Portland Oregon, October 24, 1924.

Wesley M. Carviness
 Surveyor General.