

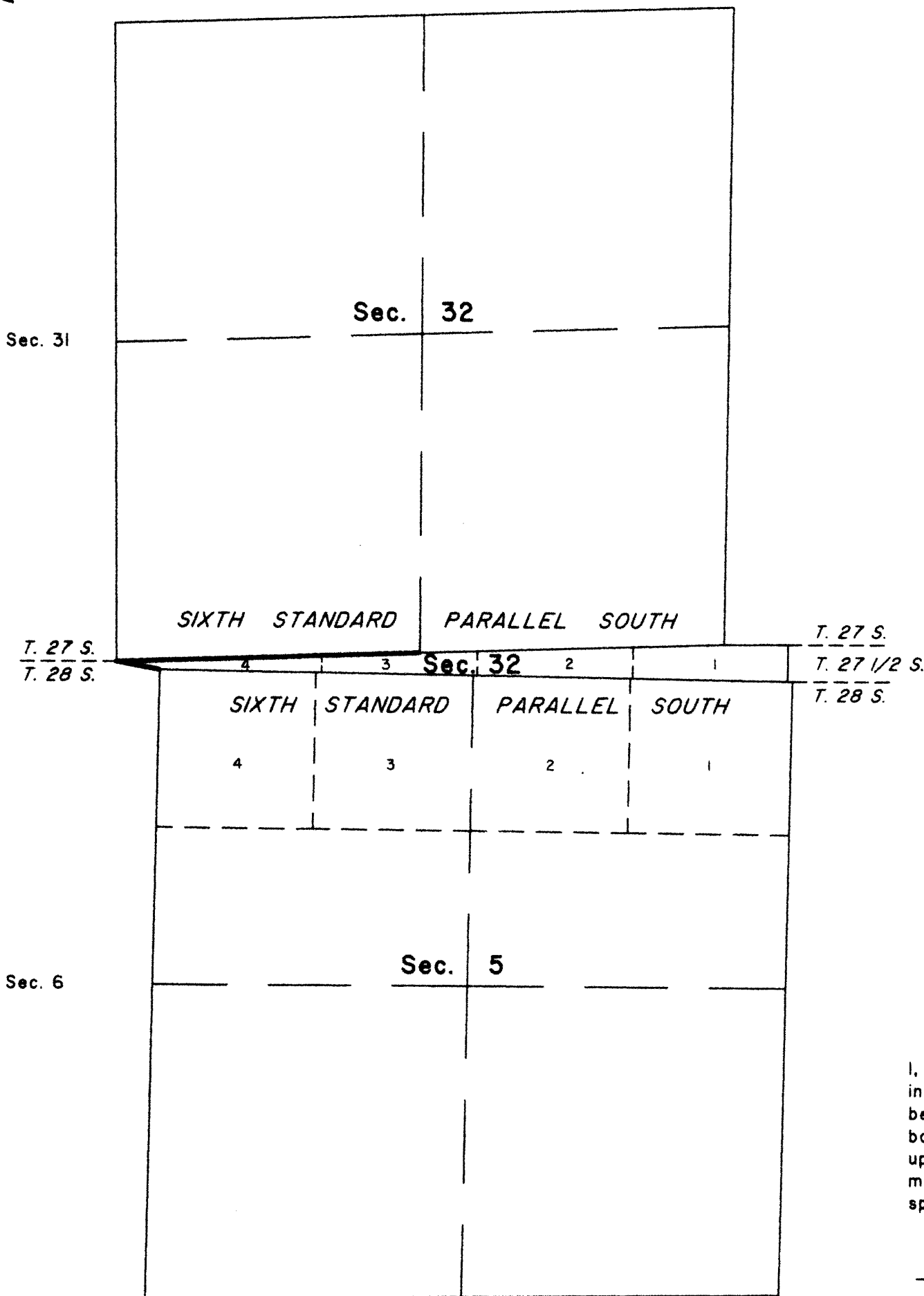
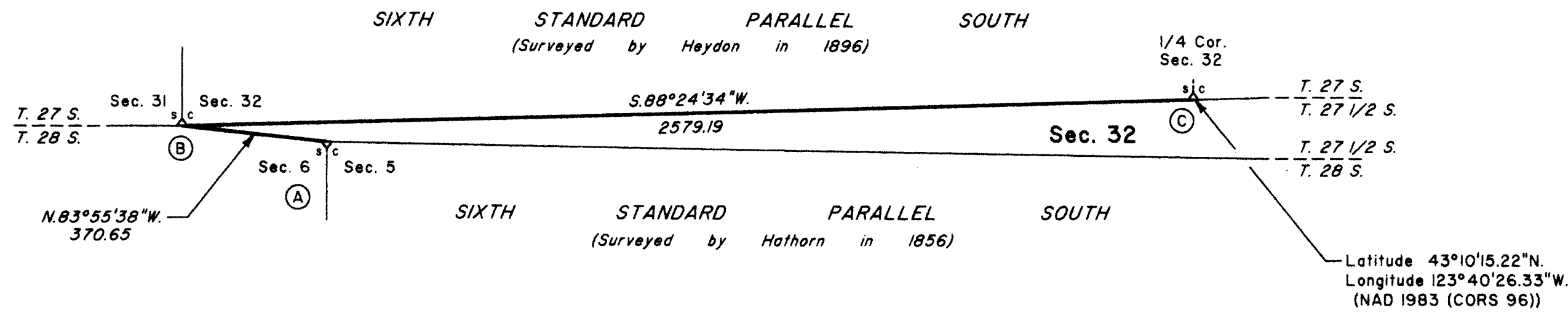
TOWNSHIP 27 1/2 SOUTH, RANGE 8 WEST, OF THE WILLAMETTE MERIDIAN, OREGON

SHEET 1 OF 2

FILED

Date: 8/6/2014 By: JC
 This survey consists of:
 Map: T27 1/2-BW 2012-1
 Narrative: VOL. 58 PGS 23051-2
 Corner Rpt: THIS PLAT REPRESENTS THE ENTIRE RECORD OF THE DEPENDENT RESURVEY

RETRACEMENT



LOCATION DIAGRAM (NOT TO SCALE)

The history of official surveys pertaining to this retracement is as follows:

In 1856, Dennis Hathorn, U.S. Deputy Surveyor, surveyed the exterior of T. 28 S., R. 8 W., as shown on the official plat of survey approved July 7, 1856.

In 1896, William P. Heydon, U.S. Deputy Surveyor, retraced a portion of the Sixth Standard Parallel South through R. 8 W., as shown on the official plat of survey approved September 10, 1897.

In 1961, C. Albert White, John M. Jelley, and James E. Jelly, Cadastral Surveyors, resurveyed the Sixth Standard Parallel South along a portion of the north boundary of T. 28 S., R. 8 W. and along a portion of the south boundary of T. 27 S., R. 8 W., and surveyed the subdivisional lines of T. 27 1/2 S., R. 8 W., as shown on the official plat of survey accepted February 6, 1962.

In 1975, James E. Jelley, Cadastral Surveyor, resurveyed a portion of the subdivisional lines of T. 28 S., R. 8 W., as shown on the official plat of survey accepted February 22, 1978.

The following local surveys filed in the Douglas County Surveyor's Office are referred to in subsequent corner description and are referenced by surveyor's last name, official title or Professional Land Surveyor (PLS) No., and year.

Date	Name and Registration Number	File Number
1957	James Byron, Deputy County Surveyor	CS 49/5
1977	Douglas County Surveyor's Office	CS 59/42
2005	Tony Hostetter, PLS No. 1975	MI47-36

I, Kenneth W. Saveland, Cadastral Surveyor, HEREBY CERTIFY upon honor, that in pursuance of special instructions bearing the approval date of the 28th day of April, 2010, and the assignment instructions bearing the date of the 12th day of April, 2012, I have retraced portions of the north and south boundaries, Township 27 1/2 South, Range 8 West, Willamette Meridian, Oregon, which is represented upon this plat as having been executed by me and under my direction; and that said survey has been made in strict conformity with said special instructions, the Manual of Surveying Instructions, and in the specific manner described on this plat.

Kenneth W. Saveland
 Cadastral Surveyor
 Date: November 14, 2012

This plat constitutes the entire record of the retracement of portions of the north and south boundaries, Township 27 1/2 South, Range 8 West, Willamette Meridian, Oregon.

The direction of the lines are based on the true meridian as determined by Global Positioning System (GPS) techniques and carried forward by sustained angulation using conventional survey techniques. All measurements along the lines were derived through the use of GPS and conventional survey techniques. Measured distances and directions have been adjusted by computer software that incorporates a least squares adjustment routine. The adjusted mean bearings and mean horizontal ground elevation distances are reported to the nearest second and 0.01 foot.

The latitudes and areas are as shown on the plat accepted February 6, 1962.

The lines of the official original surveys and resurveys were retraced and search was made for all corners, lines, other calls of the record, and, where available, collateral evidence of local surveys and corners. Identified corners were perpetuated in their original positions. The retracement data were thoroughly verified and only the true line field data are given hereon.

Each new bearing tree has a 2 1/2 inch x 1/4 inch magnetic nail (Mag Nail) driven at the base on right side center, unless otherwise noted in the corner description.

Only those lines bounding Federal interest land were blazed.

The geographic position shown hereon was determined by a tie from a temporary GPS control point, utilizing dual frequency, carrier phase GPS receivers, and processed using the National Geodetic Survey's Online Positioning User Service (OPUS).

The survey was executed in accordance with the specification set forth in the Manual of Surveying Instructions (2009), and the special instructions approved April 28, 2010, for Group No. 2500, Administrative File No. 1201, Oregon, by Kenneth W. Saveland, Cadastral Surveyor, beginning April 18, 2012, and completed May 2, 2012. He was assisted by Robert NMI Durning, Thomas A. Hollamon, and Marc A. Montpas, Surveying Technicians.

LEGEND

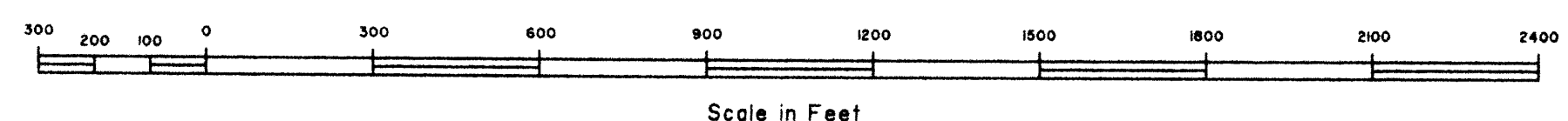
◊ Original corner previously remonumented

UNITED STATES DEPARTMENT OF THE INTERIOR
 BUREAU OF LAND MANAGEMENT
 Portland, Oregon

The survey represented by this plat, having been correctly executed in accordance with the requirements of law and the regulations of this Bureau, is hereby accepted.

For the Director
Mary J. M. Husted
 Chief Cadastral Surveyor of Oregon

November 27, 2012
 Date



Scale in Feet

OFFICIALLY FILED: 12/11/12
 DOUGLAS COUNTY SURVEYOR

TOWNSHIP 27 1/2 SOUTH, RANGE 8 WEST, OF THE WILLAMETTE MERIDIAN, OREGON

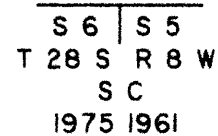
SHEET 2 OF 2

RETRACEMENT

FILED
 Date: 8/6/2014 By: JC
 This survey consists of:
 Map: T27 1/2-8W 2012-1
 Narrative: VOL 58 PGS 23051-2
 Corner Rpt: THIS PLAT REPRESENTS THE ENTIRE RECORD OF THE DEPENDENT RESSURVEY
 DOUGLAS COUNTY SURVEYOR

12/11/2012 OFFICIALLY FILED: 2012

(A) The standard cor. of secs. 5 and 6, on the N. bdy. of T. 28 S., R. 8 W., monumented with an iron post, 2 1/2 ins. diam., firmly set, projecting 3 ins. above ground, (alongside of which is an iron post, 1 1/4 ins. diam., firmly set, bent N., projecting 8 ins. above ground, with a brass cap mkd. COUNTY SURVEYORS OFFICE T27S R8W S 32 6 5 T28S R8W 1957), with brass cap mkd.



from which the remains of the original bearing trees mkd. by Hathorn

A sawed fir stump, 32 ins. diam., bears S. 50° E., 17.2 ft. dist., with a healed blaze and metal cover.

A sawed fir stump, 60 ins. diam., bears S. 46° W., 36.3 ft. dist., with no marks visible.

and the remains of a bearing tree mkd. by James Byron, Deputy County Surveyor, in 1957

A hemlock snag, 10 ins. diam., bears S. 84° E., 19.8 ft. dist., with no marks visible and a metal cover.

and the remains of a bearing tree mkd. by White, et al.

A sawed, decayed fir stump, 58 ins. diam., bears S. 29° E., 18.5 ft. dist., with scribe marks T28S R visible on a partially healed blaze.

and the remains of a reference tree mkd. by person(s) unknown

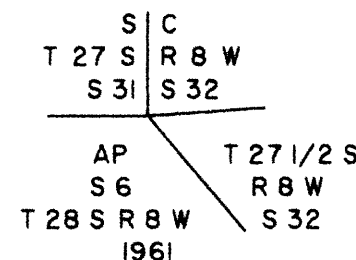
A sawed, decayed hemlock stump, 43 ins. diam., bears N. 28° E., 23.3 ft. dist., with axe marks visible, a nail stamped "W" driven in base facing the cor., and a metal cover.

and new bearing trees

A fir, 7 ins. diam., bears S. 43° E., 13.2 ft. dist., mkd. T28S R8W S5 BT.

A fir, 9 ins. diam., bears S. 36 3/4° W., 10.5 ft. dist., mkd. T28S R8W S6 BT.

(B) The standard cor. of secs. 31 and 32, on the S. bdy. of T. 27 S., R. 8 W., identical with western terminus and cor. of sec. 32, T. 27 1/2 S., R. 8 W., monumented with an iron post, 2 1/2 ins. diam., firmly set, buried 22 ins. below ground surface (alongside of which is an iron post, 1 1/4 ins. diam., firmly set, bent S., buried 24 ins. below ground surface with a brass cap mkd. COUNTY SURVEYORS OFFICE T27S R8W SEC 31 32 6 T28S R8W 1957), with brass cap mkd.



from which the remains of an original bearing tree mkd. by Heydon

A sawed fir stump, 36 ins. diam., bears N. 5° W., 26.4 ft. dist., with no marks visible.

and the remains of a bearing tree mkd. by Byron, Deputy County Surveyor, in 1957

A roothole bears S. 5° W., 44.9 ft. dist., alongside of which is an uprooted, burnt, sawed, decayed hemlock stump, size indeterminate, with fragmentary scribe marks visible on a partially healed blaze.

and the remains of bearing trees mkd. by White, et al.

A sawed, decayed fir stump, 43 ins. diam., bears N. 80 1/2° E., 45.5 ft. dist., with a healed blaze.

A sawed, decayed fir stump, 30 ins. diam., bears S. 42° E., 120.1 ft. dist., with scribe marks 6 AP B visible on an open blaze. (Record, S. 43° E., 122.1 ft. dist.)

and the remains of a reference tree mkd. by person(s) unknown

A sawed fir stump, 48 ins. diam., bears N. 15 3/4° E., 50.9 ft. dist., with no marks visible, a nail stamped "W" driven in base facing the cor., and a metal tag.

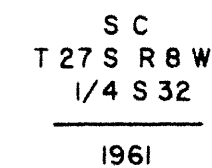
and new bearing trees

A fir, 9 ins. diam., bears N. 53° E., 23.6 ft. dist., mkd. T27S R8W S32 BT.

A fir, 11 ins. diam., bears N. 63 3/4° W., 9.4 ft. dist., mkd. T27S R8W S31 BT.

Reset iron post, 28 ins. long, 24 ins. in ground, add marks 2012 to cap, and bury county monument alongside the iron post.

(C) The standard 1/4 sec. cor. of sec. 32, perpetuated by the Douglas County Surveyor's Office, in 1977, subsequently perpetuated by Hostetter, PLS No. 1975, in 2005, monumented with an iron post, 2 1/2 ins. diam., firmly set, projecting 7 ins. above ground, with brass cap mkd.



from which the remains of a bearing tree mkd. by the Douglas County Surveyor's Office

A sawed, decayed fir stump, 69 ins. diam., bears S. 10° W., 38.4 ft. dist., with no marks visible, and a square-shanked spike driven at the top in the center of the stump, mkd. 80 l.

and bearing trees mkd. by Hostetter

A fir, 17 ins. diam., bears N. 16 1/2° E., 11.3 ft. dist., with fragmentary scribe marks visible on a partially healed blaze.

A fir, 20 ins. diam., bears S. 12 3/4° E., 13.2 ft. dist., with no marks visible on a partially healed blaze.

and a new bearing tree

A fir, 11 ins. diam., bears N. 80 3/4° W., 43.4 ft. dist., mkd. X BT.

Add a collar of stone around the iron post.

Corner is located 90 ft. W. of a gravel road, 19 ft. wide, bears N. 75° W. and S. 75° E.

UNITED STATES DEPARTMENT OF THE INTERIOR
 BUREAU OF LAND MANAGEMENT

Portland, Oregon

The survey represented by this plat, having been correctly executed in accordance with the requirements of law and the regulations of this Bureau, is hereby accepted.

For the Director

Mary J. M. Hartzel

Chief Cadastral Surveyor of Oregon

November 27, 2012
 Date