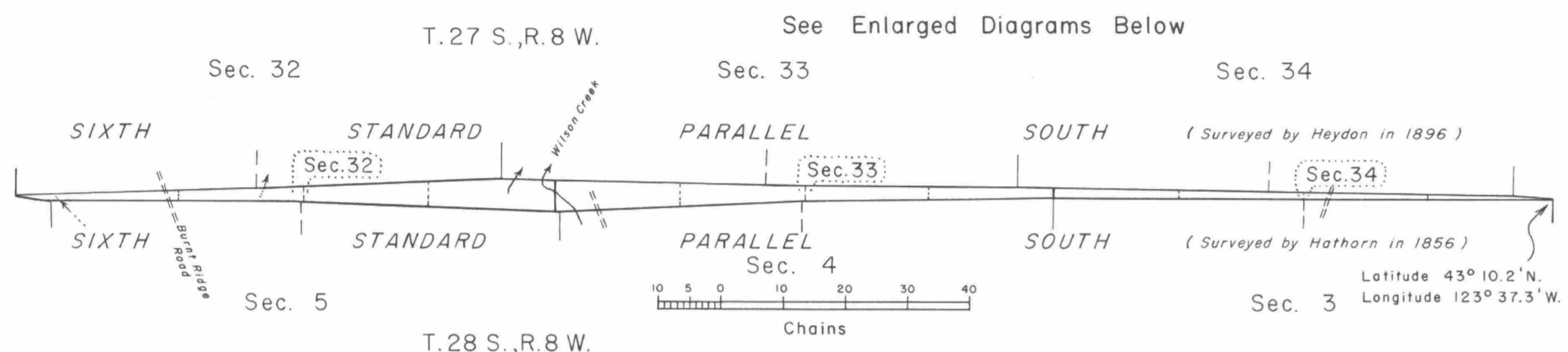


# TOWNSHIP 27 $\frac{1}{2}$ SOUTH, RANGE 8 WEST, OF THE WILLAMETTE MERIDIAN, OREGON.

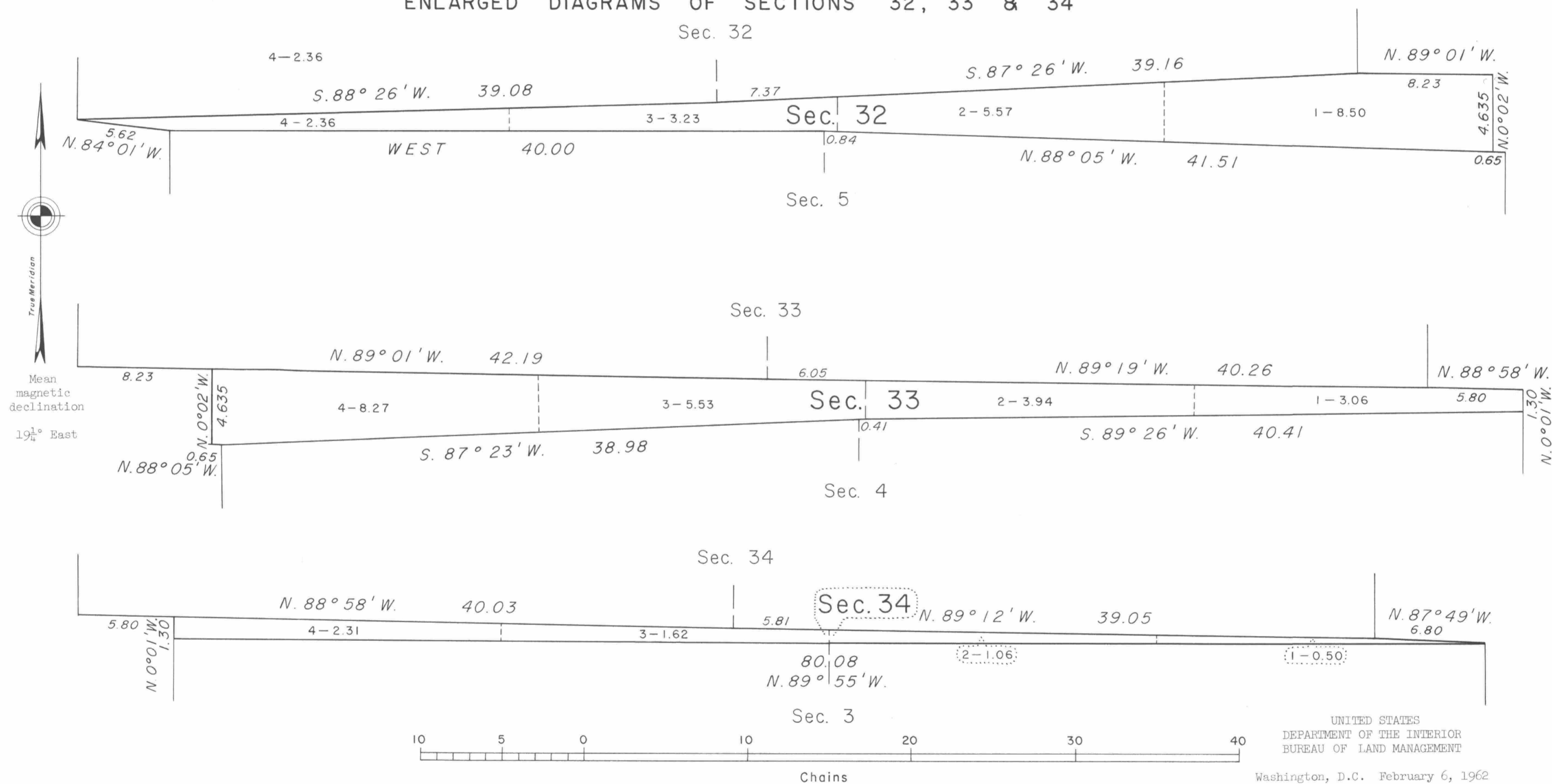
DEPENDENT RESURVEY AND SURVEY



This plat represents a retracement and reestablishment of a portion of the 6th Standard Parallel South, (South boundary, T. 27 S., R. 8 W.), and a portion of the 6th Standard Parallel South, (North boundary, T. 28 S., R. 8 W.), designed to restore the corners in their true original location according to the best available evidence, and the survey of fractional T. 27  $\frac{1}{2}$  S., R. 8 W., Willamette Meridian, Oregon. History of earlier surveys is set forth in the field note record.

Surveys shown hereon were executed by C. Albert White, John M. Jelley and James E. Jelley, from September 27 to October 6, 1961, under special instructions dated September 18, 1961, for Group 466, Oregon.

## ENLARGED DIAGRAMS OF SECTIONS 32, 33 & 34



Area surveyed: 45.95 Acres

Timber in this area consists of fir, hemlock, cedar, yew, madrone and oak.

UNITED STATES  
DEPARTMENT OF THE INTERIOR  
BUREAU OF LAND MANAGEMENT  
Washington, D.C. February 6, 1962

This plat is strictly conformable to the approved field notes, and the survey, having been correctly executed in accordance with the requirements of law and the regulations of this Bureau, is hereby accepted.

For the Director

Chief, Division of Engineering