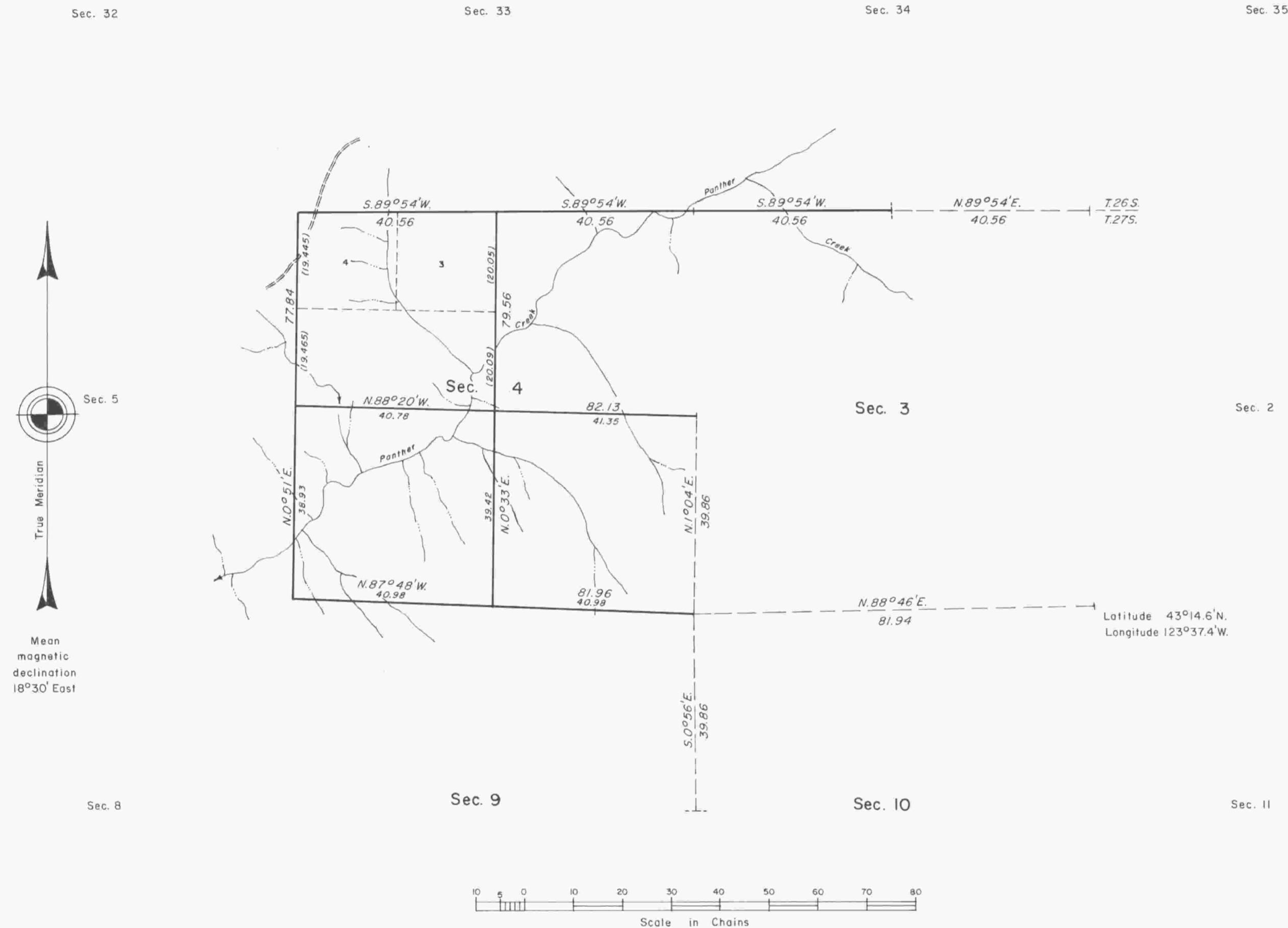


TOWNSHIP 27 SOUTH, RANGE 8 WEST, OF THE WILLAMETTE MERIDIAN, OREGON.

DEPENDENT RESURVEY AND SUBDIVISION OF SECTION 4



A history of surveys is contained in the field notes.

This plat represents a dependent resurvey of portions of the north boundary and subdivisional lines, T. 27 S., R. 8 W., Willamette Meridian, Oregon, designed to restore the corners in their true original locations according to the best available evidence, and the subdivision of section 4.

The lottings and areas are as shown on the plat approved September 10, 1897.

The survey was executed by Harvey E. Wofford and John P. Farnsworth, Cadastral Surveyors, beginning May 30, 1979, and completed July 20, 1981, pursuant to Special Instructions dated April 27, 1979, and Special Instructions dated May 12, 1981, for Group Nos. 981 and 1065, Oregon.

Timber in this area consists of fir, cedar, and hemlock, with lesser stands of tan oak, alder, maple, and yew.

UNITED STATES DEPARTMENT OF THE INTERIOR
BUREAU OF LAND MANAGEMENT
Portland, Oregon November 16, 1983

This plat is strictly conformable to the approved field notes, and the survey, having been correctly executed in accordance with the requirements of law and the regulations of this Bureau, is hereby accepted.

For the Director

William W. Glenn

Chief Cadastral Surveyor of Oregon