

TOWNSHIP 27 SOUTH, RANGE 9 WEST, OF THE WILLAMETTE MERIDIAN, OREGON. DEPENDENT RESURVEY

This plat represents a dependent resurvey of a portion of the west boundary T. 27 S., R. 8 W., and a portion of the subdivisional lines, T. 27 S., R. 9 W., Willamette Meridian, Oregon, designed to restore the corners in their true original locations according to the best available evidence.

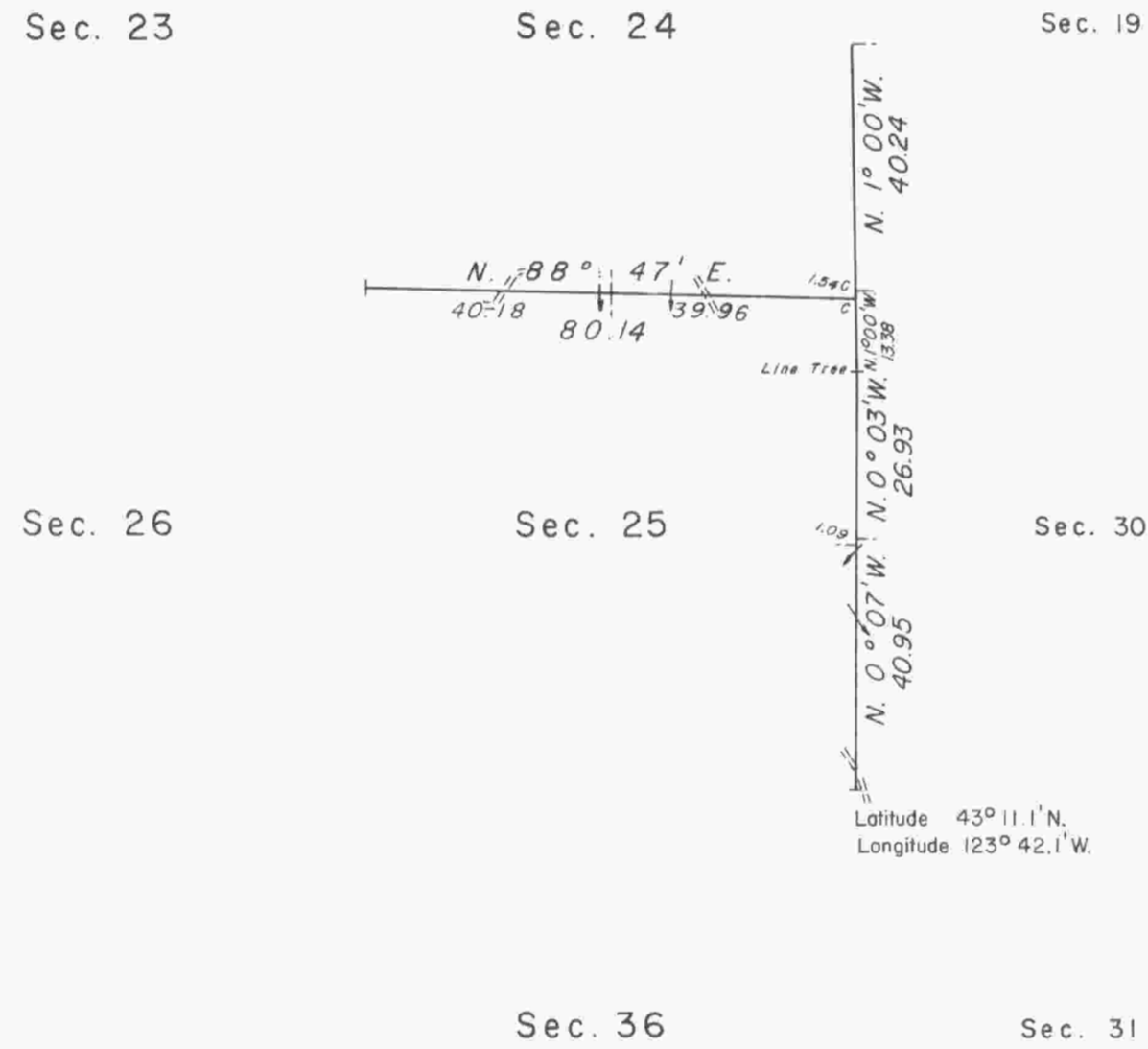
The west boundary of T. 27 S., R. 8 W., was surveyed by William P. Heydon, in 1896.

The line between sections 25 and 30, on the east boundary of T. 27 S., R. 9 W., was retraced, and a portion of the subdivisional lines of T. 27 S., R. 9 W., was surveyed by Samuel W. Lackland, in 1897.

Survey executed by Jack W. Bowder, Cadastral Surveyor, from March 1, 1976, to March 29, 1976, under Special Instructions dated February 24, 1976, which provided for the surveys included under Group No. 903, Oregon.



MEAN
MAGNETIC
DECLINATION
18°45' E.



UNITED STATES DEPARTMENT OF THE INTERIOR
BUREAU OF LAND MANAGEMENT
Washington, D.C. January 9, 1978

This plat is strictly conformable to the approved field notes, and the survey, having been correctly executed in accordance with the requirements of law and the regulations of this Bureau, is hereby accepted.

For the Director

Bernard W. Hoop
Chief, Division of Cadastral Survey



Timber in this area consists of fir, hemlock, cedar, yew, and chinquapin.

TBB

106