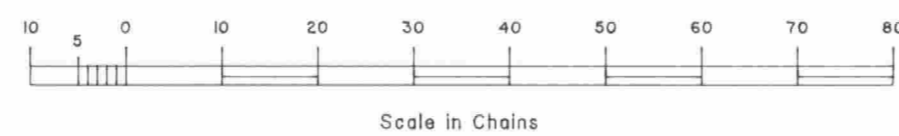
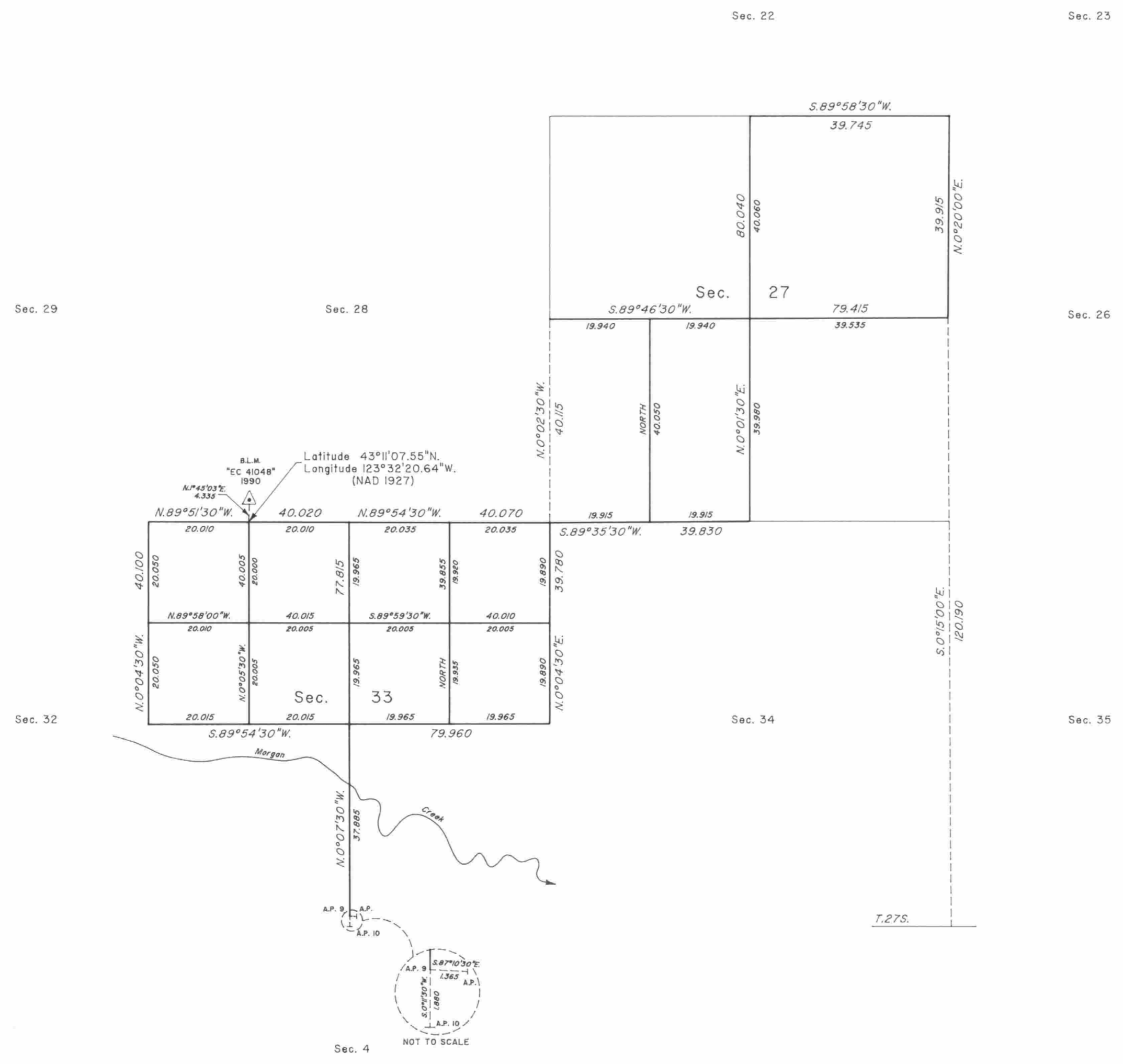
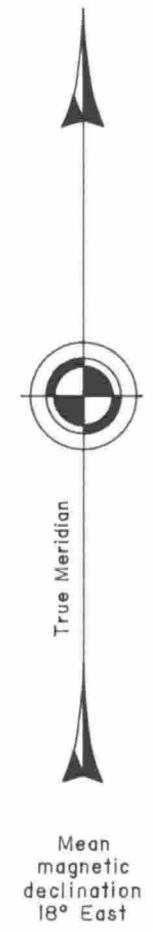


TOWNSHIP 27 SOUTH, RANGE 7 WEST, OF THE WILLAMETTE MERIDIAN, OREGON

DEPENDENT RESURVEY AND SUBDIVISION OF SECTIONS 27 AND 33



A history of surveys is contained in the field notes.

This plat represents a dependent resurvey of a portion of the subdivisional lines, and the subdivision of sections 27 and 33, T. 27 S., R. 7 W., Willamette Meridian, Oregon.

The areas are as shown on the plat approved December 5, 1856.

The survey was executed by Philip G. Griffin, Cadastral Surveyor, beginning April 3, 1990, and completed July 25, 1990, pursuant to Special Instructions dated March 20, 1990, under Group Number 1529, Oregon.

Timber in this area consists of fir, oak and madrone.

UNITED STATES DEPARTMENT OF THE INTERIOR
BUREAU OF LAND MANAGEMENT

Portland, Oregon October 27, 1993

This plat is strictly conformable to the approved field notes, and the survey, having been correctly executed in accordance with the requirements of law and the regulations of this Bureau, is hereby accepted.

For the Director
Jack W. Bowler
Acting Chief Cadastral Surveyor of Oregon