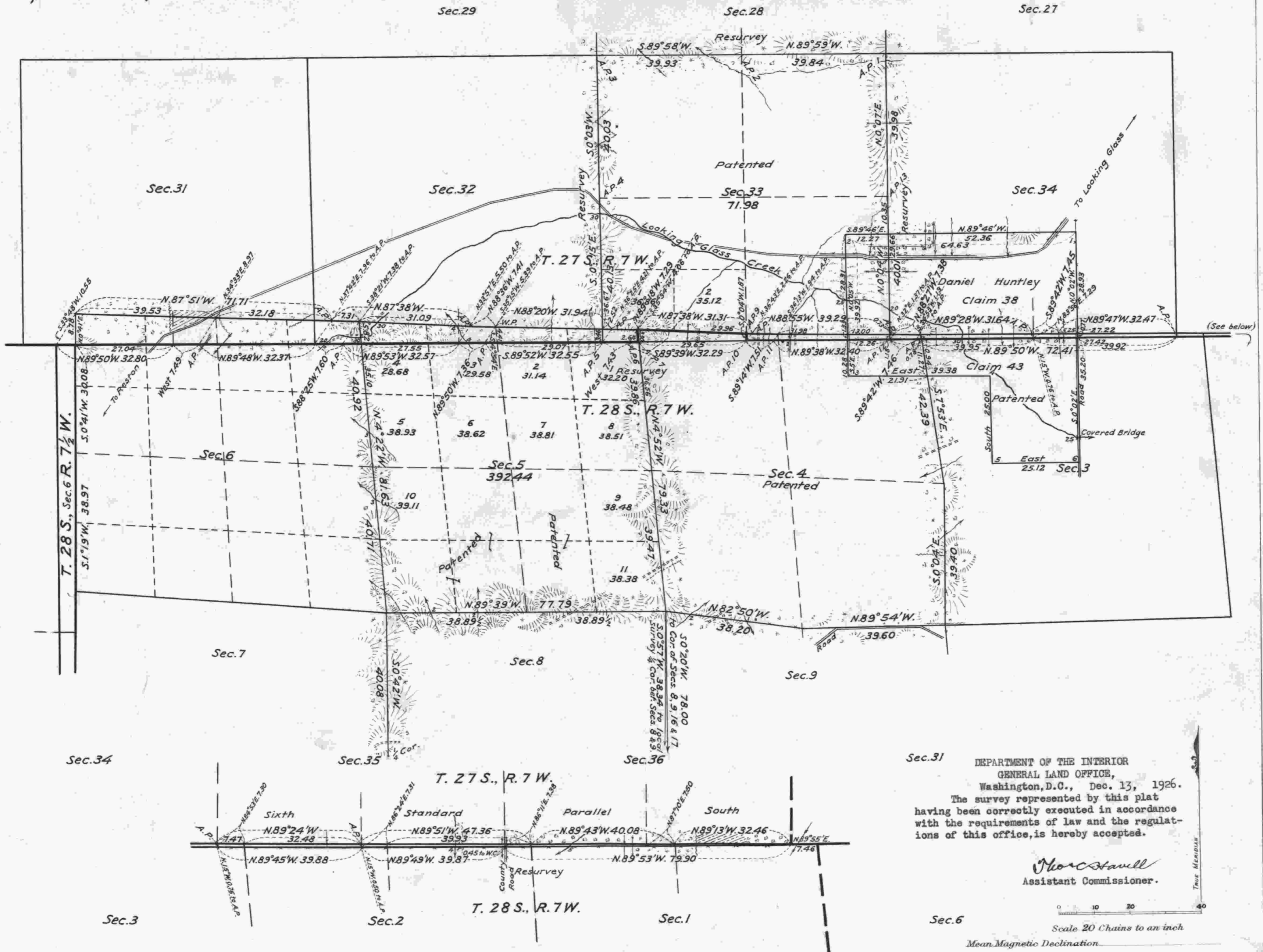


Overlap, Townships Nos 27 & 28 South, Range No 7 West of the Willamette Meridian, Oregon.



Surveys Designated	By Whom Surveyed	Group		Amount of Surveys		When Surveyed	
		No.	Date	Mts.	chs.	Begun	Completed
Exteriors	Fred Mensch U.S.C.E.	109	Feb. 25, 1924.	12	10	01	
Subdivisions	" " "	"	" " "	9	43	45	May 6, 1924 Sept. 19, 1924
Miscellaneous	" " "	"	" " "	11	22	09	

DEPARTMENT OF THE INTERIOR  
 GENERAL LAND OFFICE,  
 Washington, D.C., Dec. 13, 1926.  
 The survey represented by this plat  
 having been correctly executed in accordance  
 with the requirements of law and the regula-  
 tions of this office, is hereby accepted.

*Morcestauell*  
 Assistant Commissioner.

Scale 20 Chains to an inch  
 Mean Magnetic Declination  
 Lat. 43° 09' N. } At camp in Sec. 1, T. 28 S., R. 8 W.  
 Long. 123° 36' W.

Overlap in  
 The above map of Townships Nos. 27 & 28 South, Range No. 7 West of the Willamette  
 Meridian, Oregon, is strictly conformable to the field notes of the survey thereof  
 which have been examined and approved.

Office of U.S. Supervisor of Surveys,  
 Denver, Colorado, Feb. 15, 1926.

*William Johnson*  
 U. S. Supervisor of Surveys.

shrub  
 6/10