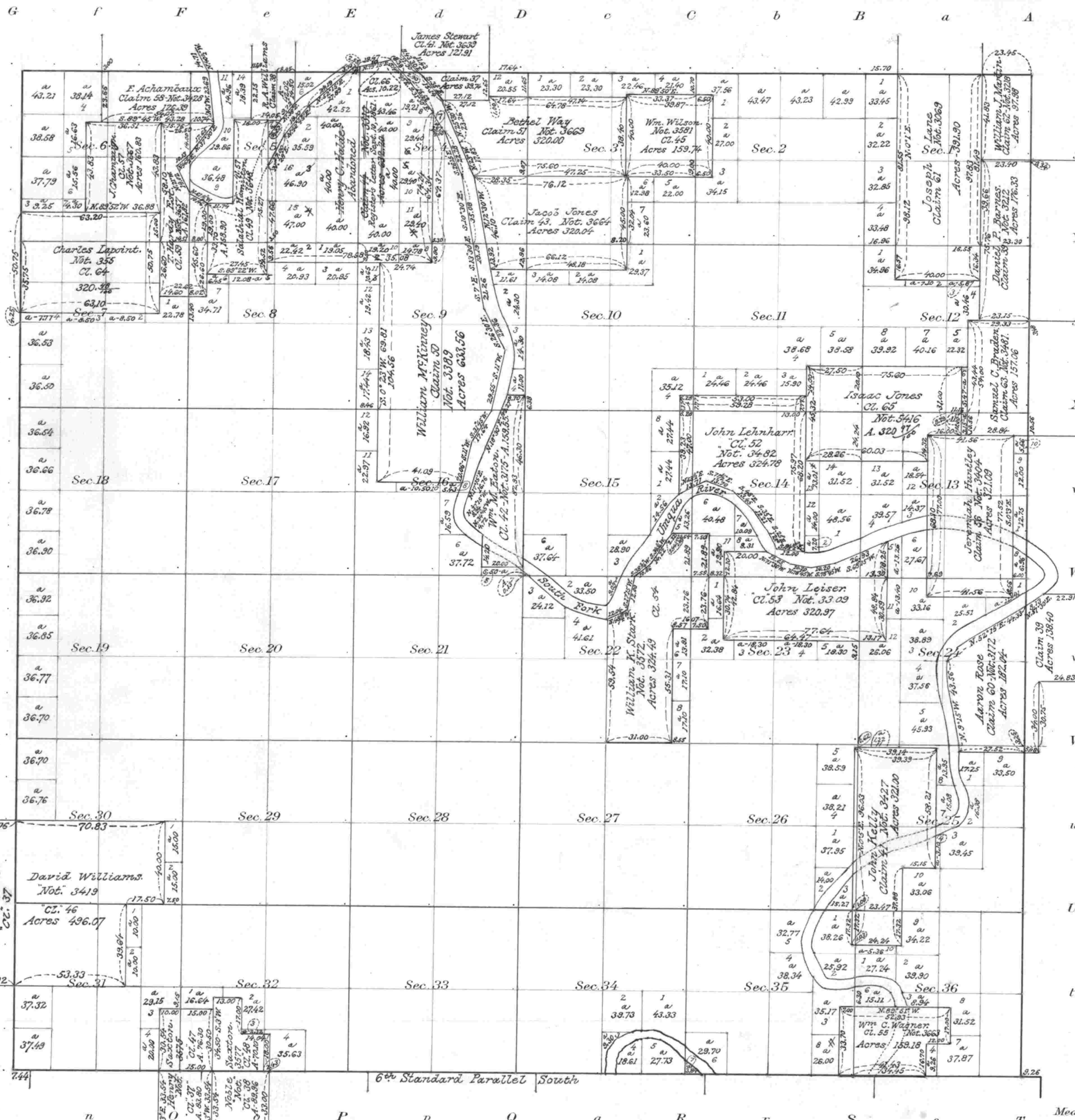
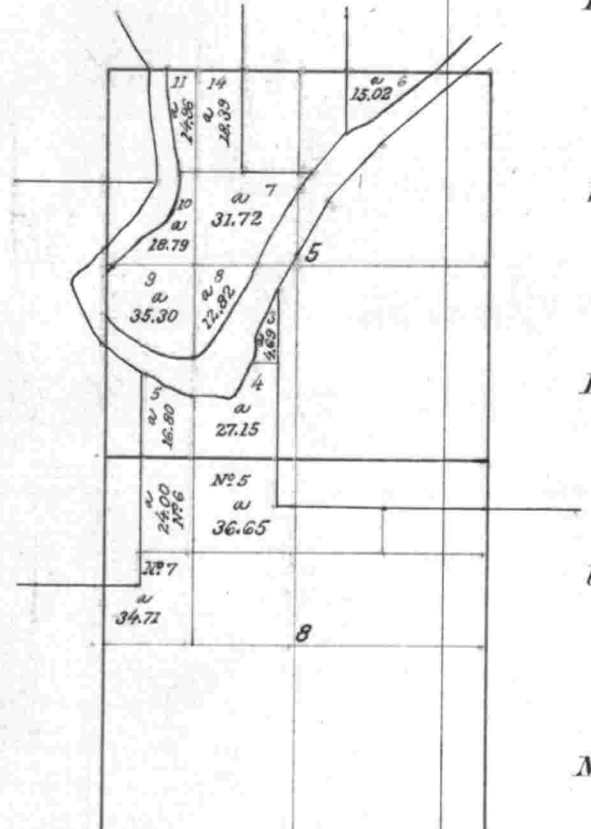


Township N^o 27 South Range N^o 6 West of the Willamette Meridian, Oregon.



Aggregate Area of Public Lands.....16216.52
 " Private Surveys.....6334.08

Special plat of fractions made by the abandonment of Salathiel Hamilton's Cl.



Approved March 20th, 1862.
J. J. Ringra
 Sur. Gen. of Oregon.

The Survey of Cl. 65, Isaac Jones, added to this map since its approval by Sur. Gen. Chapman is strictly conformable to the field notes of the Survey thereof on file in this Office which have been examined and approved.
 Surveyor General's Office.
 Eugene City, Apr. 4th, 1863.

J. J. Ringra
 Sur. Gen. of Oregon.

The Survey of claim No. 64, added to this map since its approval by Sur. Gen. Chapman is strictly conformable to the field notes of the Survey thereof on file in this Office which have been examined and approved.
 Surveyor General's Office
 Eugene City, Oregon August 19th, 1861.

J. J. Ringra

I certify the above to be a correct copy of the original plat on file in this office.
 U. S. Surveyor General's Office
 Portland, Oregon September 20, 1819.

Samuel W. Wright
 U. S. Surveyor General of Oregon.

Areas in Acres	
Public Land	
Indian Reservation	
Indian Allotments	
Mineral Claims	
Water Surface	
Total Area	

Scale 40 Chains to an inch
 Mean Magnetic Declination

Surveys Designated	By Whom Surveyed	Contract No.	Date	Amount of Surveys			When Surveyed	
				Mts.	chs.	lks.	Begun	Completed

of the survey of claims in
 The above map of, Township No. 27 South Range No. 6 West of the Willamette
 Meridian Oregon is strictly conformable to the field notes of the surveys thereof on file
 in this office, which have been examined and approved
 U. S. Surveyor General's Office.
 Eugene City August 29th, 1862
H. W. Chapman
 Surveyor General of Oregon.