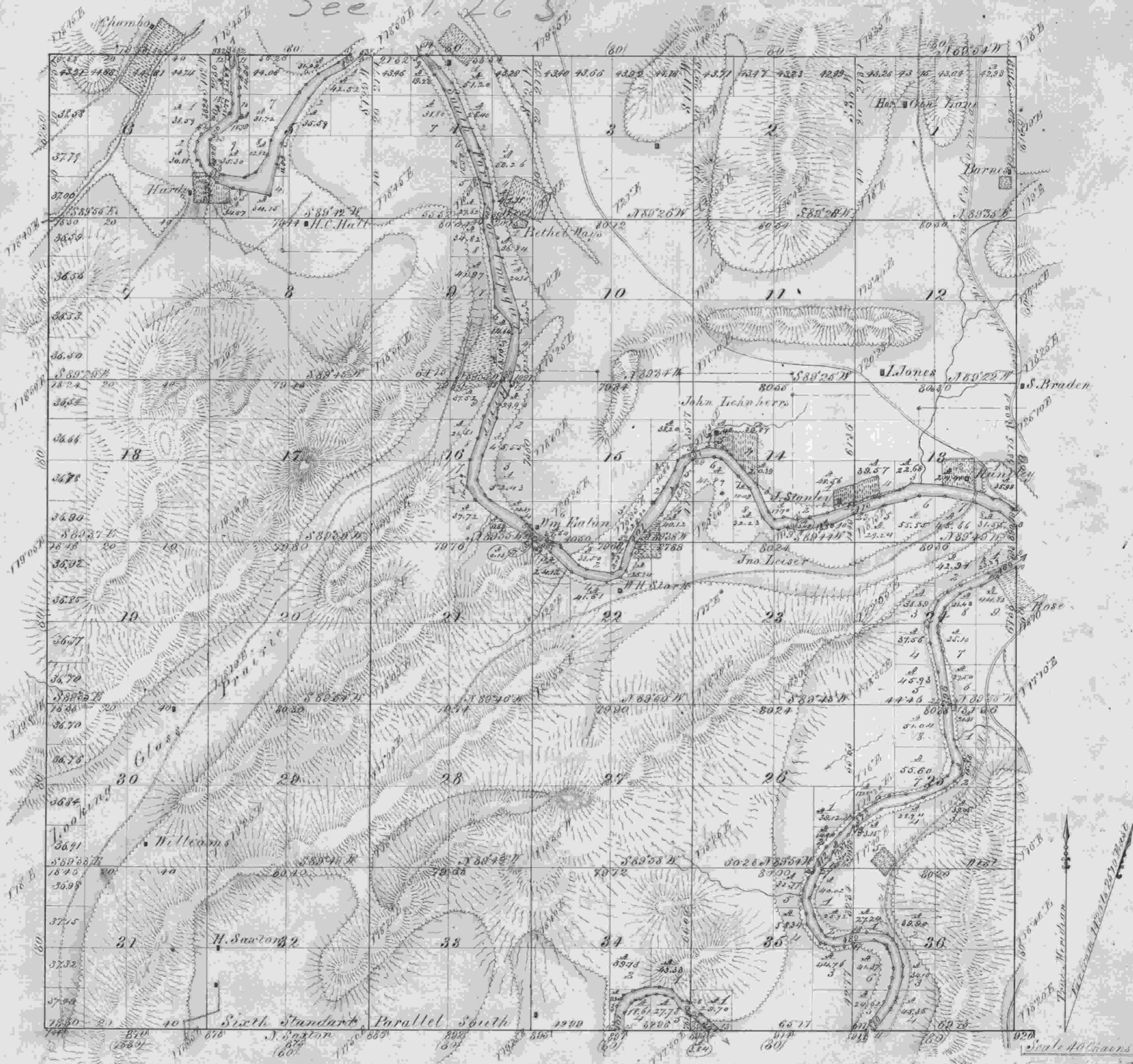


Township N^o 27 South Range N^o 6 West Willamette Meridian.

836

See T. 26 S^{6W}



Surveys designated	By whom surveyed	Contract		Amt. of surveys		When charged in the Sur. Gen's accounts
		No.	Date	McL. Chas. Links	When surveyed	
Township lines	Wilder & Gille	31	7 th April 1853	6 02 50	2 nd September 1853	3 rd Quarter 1853
Subdivisions	Wilder & Gille	32	7 th April 1853	60 01 30	8 th September 1853	5 th Quarter 1853
Re-claiming of Pt.				5 78 80		
Meanders				28 74 81		

The above Map of Township N^o 27 South Range N^o 6 West of the Willamette Meridian, Territory of Oregon, is strictly conformable to the field notes of the survey thereof on file in this office, which have been examined and approved.
 Surveyor General's Office
 Oregon City, September 9th 1853
 Geo. B. Jackson
 Sur. Gen.