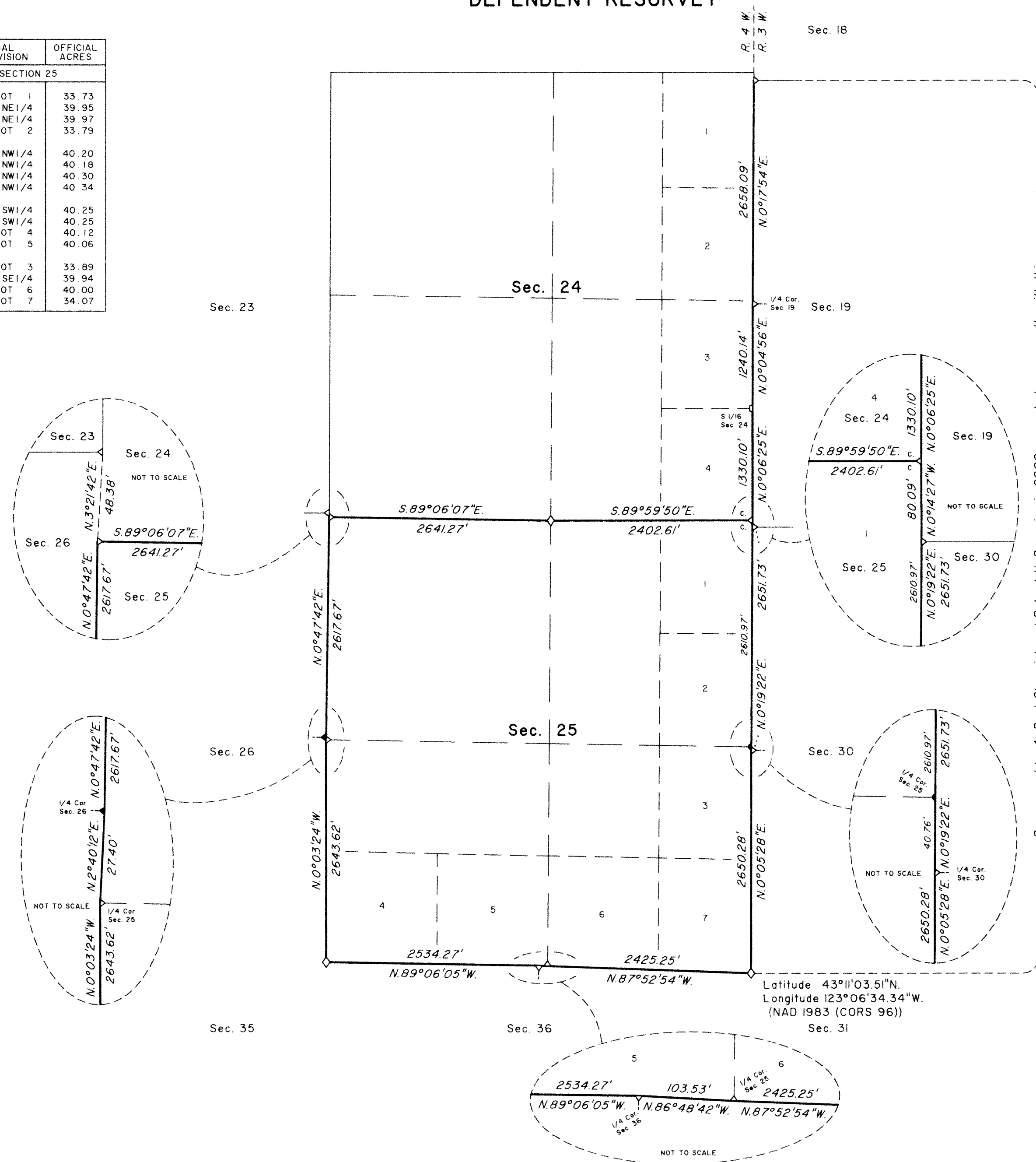


TOWNSHIP 27 SOUTH, RANGE 4 WEST, OF THE WILLAMETTE MERIDIAN, OREGON

DEPENDENT RESURVEY

FILED
 Date: 9/14/2011 By: JC
 This survey consists of:
 Map: VOL 57
 Narrative: PAGES
 Corner Rpt: 22494-22503
 DOUGLAS COUNTY
 SURVEYOR

LEGAL SUBDIVISION	OFFICIAL ACRES
SECTION 25	
LOT 1	33.73
NW1/4 NE1/4	39.95
SW1/4 NE1/4	39.97
LOT 2	33.79
NE1/4 NW1/4	40.20
NW1/4 NW1/4	40.18
SW1/4 NW1/4	40.30
SE1/4 NW1/4	40.34
NE1/4 SW1/4	40.25
NW1/4 SW1/4	40.25
LOT 4	40.12
LOT 5	40.06
LOT 3	33.89
NW1/4 SE1/4	39.94
LOT 6	40.00
LOT 7	34.07



Resurveyed by A. Bert Skeesick and Robert H. Browning in 2008, executed concurrently with this same group

A history of surveys is contained in the field notes.

This plat represents the dependent resurvey of a portion of the subdivisional lines, T. 27 S., R. 4 W., Willamette Meridian, Oregon, designed to restore the corners in their true original locations according to the best available evidence.

Measured distances and directions have been adjusted by computer software that incorporates a least squares adjustment routine. The adjusted bearings and distances are reported to the nearest second and 0.01 foot.

Actual quantity acreages have been returned for Federal interest lands where indicated. Changes in the official acreage of land described by aliquot part or lot number do not alter its description. Further subdivision of aliquot parts shall be in accordance with the Manual. Further subdivision of official lots may only be by supplemental plat or official survey. Official acreage and lot designations of Federal interest lands not affected by this survey are as shown on the plat approved June 10, 1918.

The survey was executed by A. Bert Skeesick, Cadastral Surveyor, and Robert H. Browning, Surveying Technician, beginning June 30, 2008, and completed September 3, 2008, pursuant to Special Instructions dated February 14, 2008, under Group Number 2189, Oregon.

LEGEND

- ◇ Original corner previously remonumented
- ◆ Original corner remonumented this survey
- Corner previously established or reestablished
- Corner established or reestablished this survey

UNITED STATES DEPARTMENT OF THE INTERIOR
 BUREAU OF LAND MANAGEMENT

Portland, Oregon

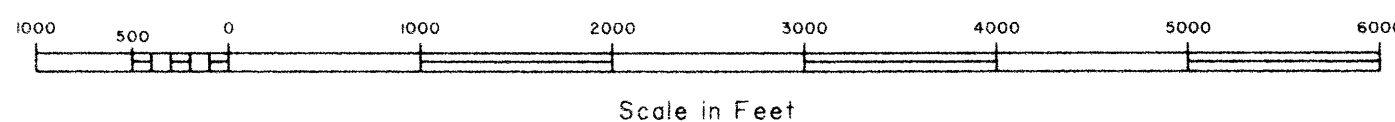
This plat is strictly conformable to the approved field notes, and the survey, having been correctly executed in accordance with the requirements of law and the regulations of this Bureau, is hereby accepted.

For the Director

Maury J. M. Hunt

Chief Cadastral Surveyor of Oregon

May 18, 2011
 Date



OFFICIALLY FILED: 7/28/2011