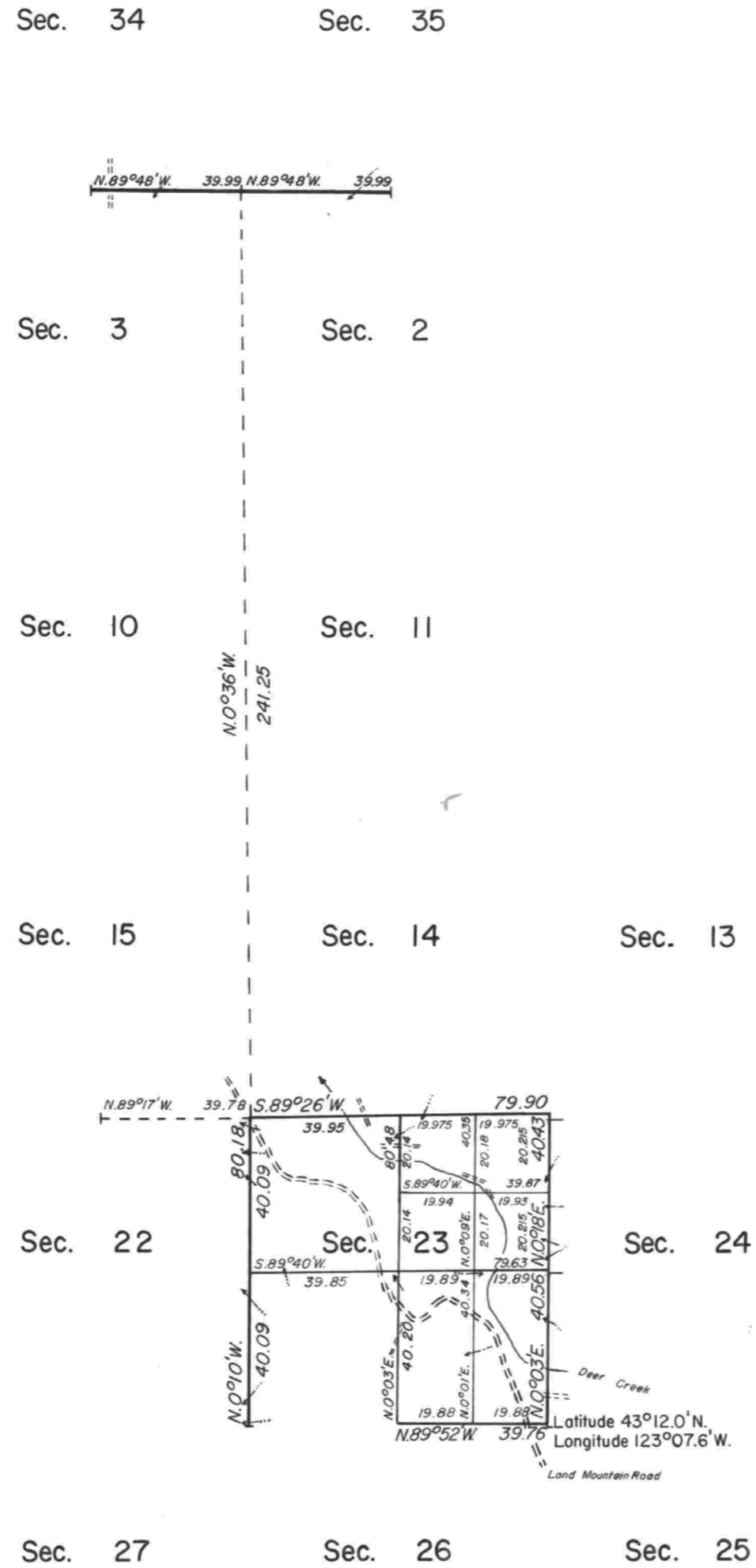


TOWNSHIP 27 SOUTH, RANGE 4 WEST, OF THE WILLAMETTE MERIDIAN, OREGON.
DEPENDENT RESURVEY AND SUBDIVISION OF SECTION



This plat represents a dependent resurvey of a portion of the north boundary and subdivisional lines, designed to restore the corners in their true original locations according to the best available evidence, and subdivision of section 23, T. 27 S., R. 4 W., Willamette Meridian, Oregon.

The lottings and areas are as shown on the plat approved December 10, 1855.

The north boundary and a portion of the subdivisional lines were surveyed by Addison R. Flint, in 1855.

A portion of the subdivisional lines was resurveyed and the subdivision of the township was completed by Elmer F. Strickler, in 1917.

The resurvey and subdivision of section were executed by Glenn S. Baughman, Registered Land Surveyor No. 536, from October 28, 1975, to December 2, 1975, under Contract No. 52500-CI5-1116 and under Special Instructions dated October 31, 1974, which provide for the surveys included under Group No. 855, Oregon.

The surveys executed under this contract were field inspected by William W. Glenn, Contracting Officer's Authorized Representative, and found to have been executed in strict conformance with the Special Instructions, the Manual of Instructions for the Survey of the Public Lands of the United States, 1973, and in the specific manner described in the field notes of this survey.

UNITED STATES DEPARTMENT OF THE INTERIOR
BUREAU OF LAND MANAGEMENT
Washington, D.C. June 26, 1978

This plat is strictly conformable to the approved field notes, and the survey, having been correctly executed in accordance with the requirements of law and the regulations of this Bureau, is hereby accepted.

For the Director

Bernard W. Forney

Chief, Division of Cadastral Survey

Timber in this area consists of fir, cedar, hemlock, alder, maple, pine, and yew.

SA