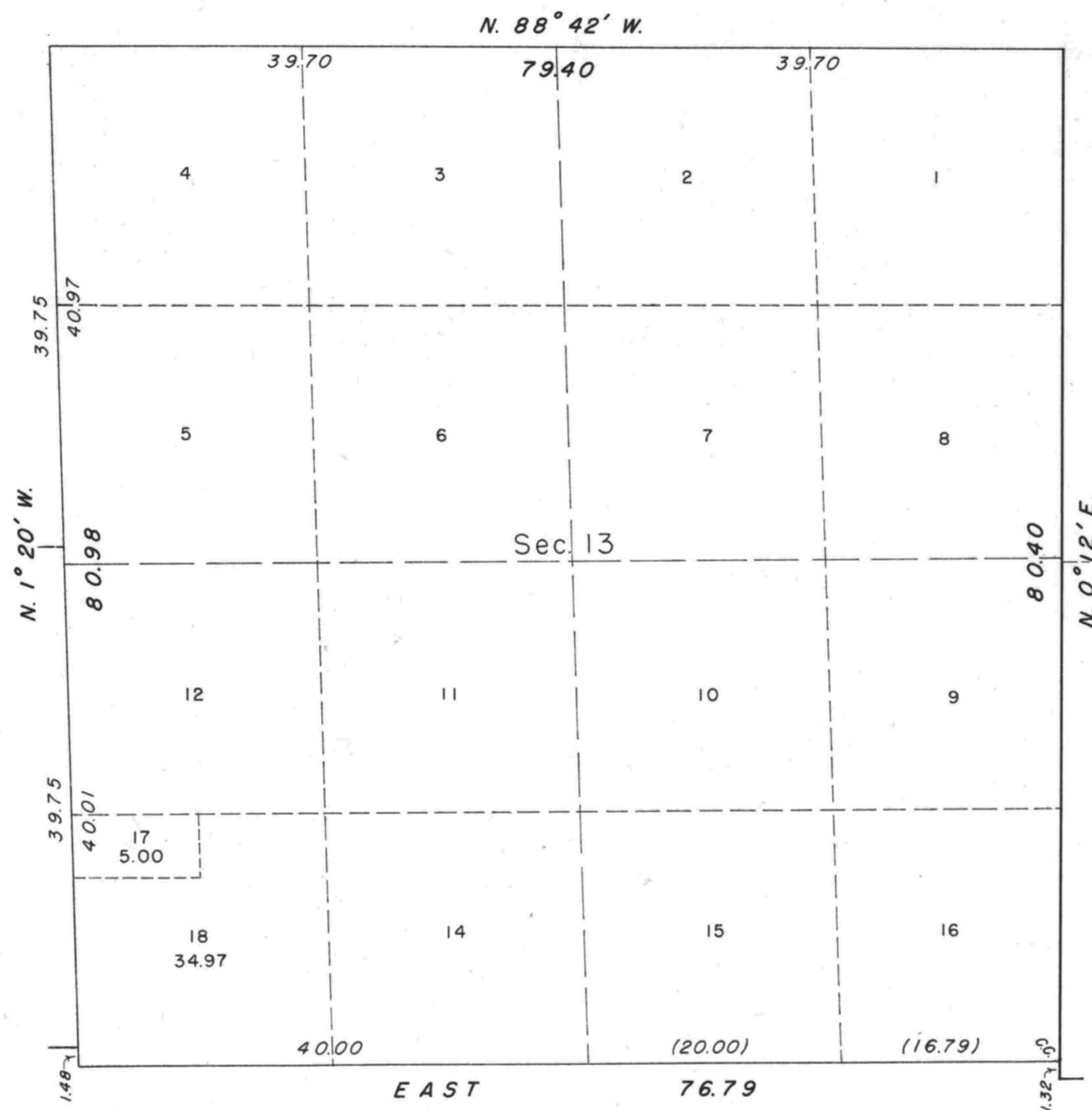
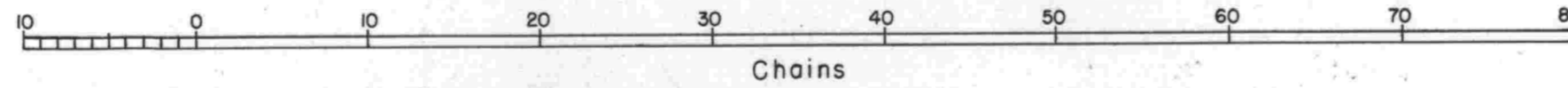


TOWNSHIP 27 SOUTH, RANGE 4 WEST, OF THE WILLAMETTE MERIDIAN, OREGON.  
SUPPLEMENTAL PLAT



This plat showing subdivision of original lot 13, Section 13, T. 27 S., R. 4 W., W. M., Oregon, is based upon the plat approved June 10, 1918.

UNITED STATES DEPARTMENT OF THE INTERIOR  
BUREAU OF LAND MANAGEMENT  
Washington, D. C. July 19, 1954

This plat showing amended lottings, having been correctly prepared in accordance with the regulations, is hereby accepted.

For the Director

*Carl G. Harrington*  
Cadastral Engineering Officer