

# TOWNSHIP 27 SOUTH, RANGE 3 WEST, OF THE WILLAMETTE MERIDIAN, OREGON

SHEET 1 OF 2

## RETRACEMENT

FILED  
 Date: 9/18/2012 By: JC  
 This survey consists of:  
 Map: PLAT: 2012-1  
 Narrative: VOL. 58 PGS 22911-2  
 Corner Rpt: THIS PLAT REPRESENTS THE  
 ENTIRE RECORD OF THE  
 DEPENDENT RESURVEY  
 DOUGLAS COUNTY  
 SURVEYOR

This plat constitutes the entire record of the retracement of a portion of the subdivision of section lines of section 1, Township 27 South, Range 3 West, Willamette Meridian, Oregon.

The history of the official surveys pertaining to this retracement is on Sheet 2 of 2.

The directions of the lines are based on the true meridian as determined by a combination of Global Positioning System (GPS) techniques and direct solar observation, carried forward by sustained angulation using conventional survey techniques. All measurements along the lines were derived through the use of GPS and conventional survey techniques. Measured distances and directions have been adjusted by computer software that incorporates a least squares adjustment routine. The adjusted mean bearings and mean horizontal ground elevation distances are reported to the nearest second and 0.01 foot.

Official areas based on the measurements of this survey have been returned for Federal interest land where indicated. Aliquot part legal subdivisions retain their aliquot characteristics and refer to precisely the same land as that which was previously identified by its original survey or description. A lot can only be subdivided by survey or supplemental plat. Except as indicated hereon, the lottings and areas are as shown on the plats approved March 26, 1872, and October 23, 1882, and plat accepted August 31, 1984.

The lines of the official original surveys and resurveys were retraced and search was made for all corners, lines, other calls of the record, and, where available, collateral evidence of local surveys and corners. Identified corners were perpetuated in their original positions. The retracement data were thoroughly verified and only the true line field data are given hereon.

Each new bearing tree has a 2 1/2 x 1/4 inch magnetic nail (Mag Nail) driven at the base on right side center, unless otherwise noted in the corner description.

Only those lines bounding Federal interest land were blazed.

The geographic positions shown hereon were determined by ties from temporary GPS control points, utilizing dual frequency, carrier phase GPS receivers, and processed using the National Geodetic Survey's Online Positioning User Service (OPUS).

The survey was executed in accordance with the specification set forth in the Manual of Surveying Instructions (2009), and the special instructions approved April 28, 2010, for Group No. 2500, Administrative File No. 1104, Oregon, by Kenneth W. Saveland, Cadastral Surveyor, beginning August 24, 2011, and completed October 26, 2011. He was assisted by A. Bert Skeesick, Cadastral Surveyor, and Robert NMI Durning and Thomas A. Hollamon, Surveying Technicians.

UNITED STATES DEPARTMENT OF THE INTERIOR  
 BUREAU OF LAND MANAGEMENT

Portland, Oregon

The survey represented by this plat, having been correctly executed in accordance with the requirements of law and the regulations of this Bureau, is hereby accepted.

For the Director

*Mary J. M. Hall*

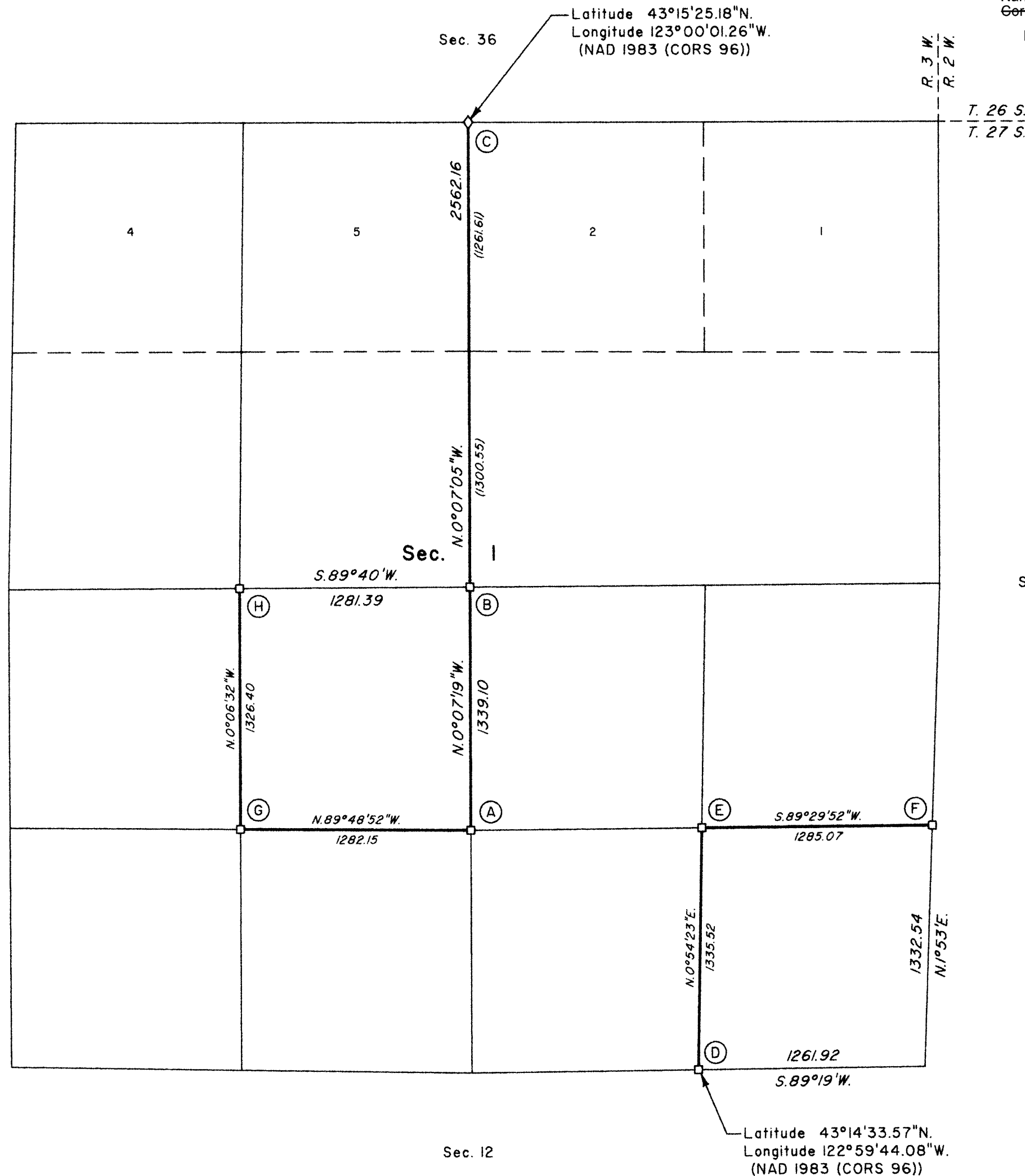
Chief Cadastral Surveyor of Oregon

*July 27, 2012*  
 Date

OFFICIALLY FILED: 9/12/12



LEGAL SUBDIVISION	OFFICIAL ACRES
SECTION 1	
NE 1/4 SW 1/4	39.22
SE 1/4 SE 1/4	38.99
TOTAL AREA	78.21
FEDERAL INTEREST LAND RESURVEYED	



## TOWNSHIP 27 SOUTH, RANGE 3 WEST, OF THE WILLAMETTE MERIDIAN, OREGON

SHEET 2 OF 2

## RETRACEMENT

FILED

Date: 9/18/2012 By: JC

This survey consists of:

Map: PLAT: 2012-1

Narrative: VOL. 58 PGS 22911-2

Corner Rpt. THIS PLAT REPRESENTS THE  
ENTIRE RECORD OF THE  
DEPENDENT SURVEYDOUGLAS COUNTY  
SURVEYOR

The history of the official surveys pertaining to this retracement is as follows:

In 1855, Addison R. Flint, U.S. Deputy Surveyor, surveyed the south boundary of T. 26 S., R. 3 W., as shown on the plat of official survey approved December 10, 1855.

In 1871, Addison R. Flint and L.L. Williams, U.S. Deputy Surveyors, surveyed a portion of the subdivisional lines as shown on the plat of official survey approved March 26, 1872.

In 1882, Samuel C. Flint, U.S. Deputy Surveyor, surveyed the east boundary and subdivisional lines as shown on the plat of official survey approved October 23, 1882.

In 1958, Harold D. Corbin, Cadastral Surveyor, resurveyed portions of the north and west boundaries and subdivisional lines, and remonumented certain corners as shown on the plat of official survey accepted March 16, 1960.

In 1982, James E. Jelley and Wayne L. Rogers, Cadastral Surveyors, resurveyed portions of the north and east boundaries and subdivisional lines, and subdivided section 1 as shown on the plat of official survey accepted August 31, 1984.

- (A) The center S 1/16 sec. cor. of sec. 1, monumented with an aluminum post, 2 1/2 ins. diam., firmly set, projecting 4 ins. above ground, with aluminum cap mkd.

C  
S 1/16 | S 1  
C  
1982

from which the bearing trees mkd. by Jelley and Rogers

A fir, 21 ins. diam., bears S. 45° E., 10.9 ft. dist., with a healed blaze.

A fir, 18 ins. diam., bears N. 54 1/2° W., 15.5 ft. dist., with a healed blaze.

Corner is located 110 ft. S. of a ravine, drains N. 85° W.

- (B) The center 1/4 sec. cor. of sec. 1, monumented with an aluminum post, 2 1/2 ins. diam., firmly set, projecting 6 ins. above ground, with aluminum cap mkd.

T 27 S R 3 W  
C 1/4 S 1  
1982

from which the bearing trees mkd. by Jelley and Rogers

A fir, 26 ins. diam., bears S. 9° E., 13.5 ft. dist., with a healed blaze.

A maple, 15 ins. diam., bears N. 16 1/2° W., 19.8 ft. dist., with a healed blaze.

- (C) The 1/4 sec. cor. of secs. 1 and 36 on the N. bdy. of the Tp., monumented with an iron post, 2 1/2 ins. diam., firmly set, projecting 16 ins. above ground, with brass cap mkd.

T 26 S R 3 W  
S 36  
1/4  
S 1  
T 27 S  
1958

from which the remains of an original bearing tree

A fir snag, 42 ins. diam., bears N. 60° W., 1.3 ft. dist., with scribe marks 4 S visible on a bark blaze.

and the remains of bearing trees mkd. by Corbin

A hemlock, 23 ins. diam., bears S. 2° W., 35.0 ft. dist., with a healed blaze.

A roothole bears N. 2 1/2° W., 37.6 ft. dist., downhill of which is a fallen decayed hemlock trunk, size indeterminate, with no marks visible.

and a bearing tree mkd. by Jelley and Rogers

A hemlock, 16 ins. diam., bears N. 82 3/4° E., 19.8 ft. dist., with a healed blaze. (Record, N. 79 1/2° E.)

Raise a mound of stone, 3 ft. base, to top of iron post.

Corner is located 350 ft. N. of Bond Creek, 4 ft. wide, course S. 65° W., and 30 ft. W. of the same creek, 4 ft. wide, course S. 10° E.

- (D) The E 1/16 sec. cor. of secs. 1 and 12, monumented with an iron post, 2 1/2 ins. diam., firmly set, projecting 6 ins. above ground, with brass cap mkd.

S 1  
E 1/16 | S 1  
S 12  
1958

from which the remains of bearing trees mkd. by Corbin

A decayed fir stump, 7 ins. diam., bears S. 74 1/2° E., 7.9 ft. dist., downhill of which is a fallen, decayed fir trunk, size indeterminate, with no marks visible.

A sawed fir stump, 24 ins. diam., bears N. 58 1/2° W., 25.7 ft. dist., with a healed blaze.

and a bearing tree mkd. by person(s) unknown

A fir, 13 ins. diam., bears S. 34 1/2° W., 42.1 ft. dist., with a healed double blaze and a metal tag mkd. CHAMPION 2/86 LS1988.

and new bearing trees

A fir, 11 ins. diam., bears N. 40 3/4° E., 27.6 ft. dist., mkd. E 1/16 SI BT.

A cedar, 6 ins. diam., bears S. 44 3/4° E., 22.5 ft. dist., mkd. E 1/16 SI2 BT.

- (E) The SE 1/16 sec. cor. of sec. 1, monumented with an aluminum post, 2 1/2 ins. diam., firmly set, projecting 5 ins. above ground, with aluminum cap mkd.

SE 1/16 S 1  
1982

from which the bearing trees mkd. by Jelley and Rogers

A fir, 21 ins. diam., bears S. 21° E., 21.1 ft. dist., with a healed blaze.

A fir, 10 ins. diam., bears N. 81° W., 16.2 ft. dist., with a healed blaze.

From this cor., a point established by person(s) unknown bears S. 87° 40' 33" E., 418.04 ft. dist., monumented with a rebar, 5/8 in. diam., firmly set, projecting 5 ins. above ground, with aluminum cap mkd. OR-10-165 35D0841 BLM, with an arrow, and was not utilized during the course of this survey.

- (F) The S 1/16 sec. cor. of secs. 1 and 6, monumented with an aluminum post, 2 1/2 ins. diam., firmly set, projecting 1 in. above ground, with aluminum cap mkd.

S 1/16  
S 1 | S 6  
1982

from which the bearing trees mkd. by Jelley and Rogers

A fir, 14 ins. diam., bears N. 56° E., 50.2 ft. dist., with a healed blaze.

A fir, 19 ins. diam., bears S. 83 1/4° W., 54.1 ft. dist., with a healed blaze.

- (G) The SW 1/16 sec. cor. of sec. 1, monumented with an aluminum post, 2 1/2 ins. diam., firmly set, projecting 8 ins. above ground, with aluminum cap mkd.

SW 1/16 S 1  
1982

from which the bearing trees mkd. by Jelley and Rogers

A fir, 9 ins. diam., bears N. 29 3/4° E., 10.9 ft. dist., with a healed blaze.

A fir, 14 ins. diam., bears N. 52 1/2° W., 14.2 ft. dist., with a healed blaze.

Add a collar of stone around the aluminum post.

Corner is located 30 ft. N. of a spur, slopes S. 50° W.

- (H) The center W 1/16 sec. cor. of sec. 1, monumented with an aluminum post, 2 1/2 ins. diam., firmly set, projecting 12 ins. above ground, with aluminum cap mkd.

W 1/16  
C | C  
S 1  
1982

from which the remains of bearing trees mkd. by Jelley and Rogers

A madrone snag, 8 ins. diam., bears S. 12 1/2° W., 17.2 ft. dist., with a healed blaze.

An oak with a broken top, 4 ins. diam., bears N. 2° W., 15.5 ft. dist., with no marks visible on a decayed, partially healed blaze.

and new bearing trees

A fir, 6 ins. diam., bears N. 56° E., 14.9 ft. dist., mkd. X BT.

A fir, 6 ins. diam., bears S. 46 1/2° E., 6.1 ft. dist., mkd. CW 1/16 SI BT.

UNITED STATES DEPARTMENT OF THE INTERIOR  
BUREAU OF LAND MANAGEMENT

Portland, Oregon

The survey represented by this plat, having been correctly executed in accordance with the requirements of law and the regulations of this Bureau, is hereby accepted.

For the Director

*Mary J. M. Hartsell*

Chief Cadastral Surveyor of Oregon

*July 27, 2012*  
Date

OFFICIALLY FILED: 9/12/12