

TOWNSHIP 27 SOUTH, RANGE 3 WEST, OF THE WILLAMETTE MERIDIAN, OREGON

DEPENDENT RESURVEY AND SUBDIVISION OF SECTIONS

Date: 11/16/2011 By: JC
 This survey consists of:
 Map: T27S R3W 2011-2
 Narrative: VOL 57
 Corner Rpt: PGS 22667-22686

DOUGLAS COUNTY
 SURVEYOR

A history of surveys is contained in the field notes.

This plat represents the dependent resurvey of a portion of the north boundary and subdivisional lines, and subdivision of section lines of sections 3 and II, T. 27 S., R. 3 W., Willamette Meridian, Oregon, designed to restore the corners in their true original locations according to the best available evidence.

The survey was performed utilizing both conventional (directly measured angles and distances) and NAVSTAR Global Positioning System (GPS) satellite techniques. The GPS measurements utilized dual frequency, carrier phase GPS receivers. The baselines were computed in and adjusted using a least squares adjustment routine. Conventionally measured distances and directions have been adjusted using a least squares adjustment routine. The adjusted bearings and distances are reported to the nearest second and 0.01 foot.

Actual quantity acreages have been returned for Federal interest lands where indicated. Changes in the official acreages of land described by aliquot part or lot number do not alter its description. Further subdivision of aliquot parts shall be in accordance with the Manual. Further subdivision of official lots may only be by supplemental plat or official survey. Official acreage and lot designations of Federal interest lands not affected by this survey are as shown on the plats approved March 26, 1872, and October 23, 1882.

This survey was executed by Kenneth W. Saveland, Cadastral Surveyor, beginning April 21, 2009 and completed June 18, 2009, pursuant to Special Instructions dated March 20, 2009 under Group Number 2258, Oregon.

Note:
 The lightweight lines with bearing and distance shown were surveyed by Lance J. Bishop and Wayne L. Rogers, Cadastral Surveyors, in 1984.

LEGEND

- ◊ Original corner previously remonumented
- Corner previously established or reestablished
- Corner previously established or reestablished; remonumented this survey

UNITED STATES DEPARTMENT OF THE INTERIOR
 BUREAU OF LAND MANAGEMENT

Portland, Oregon

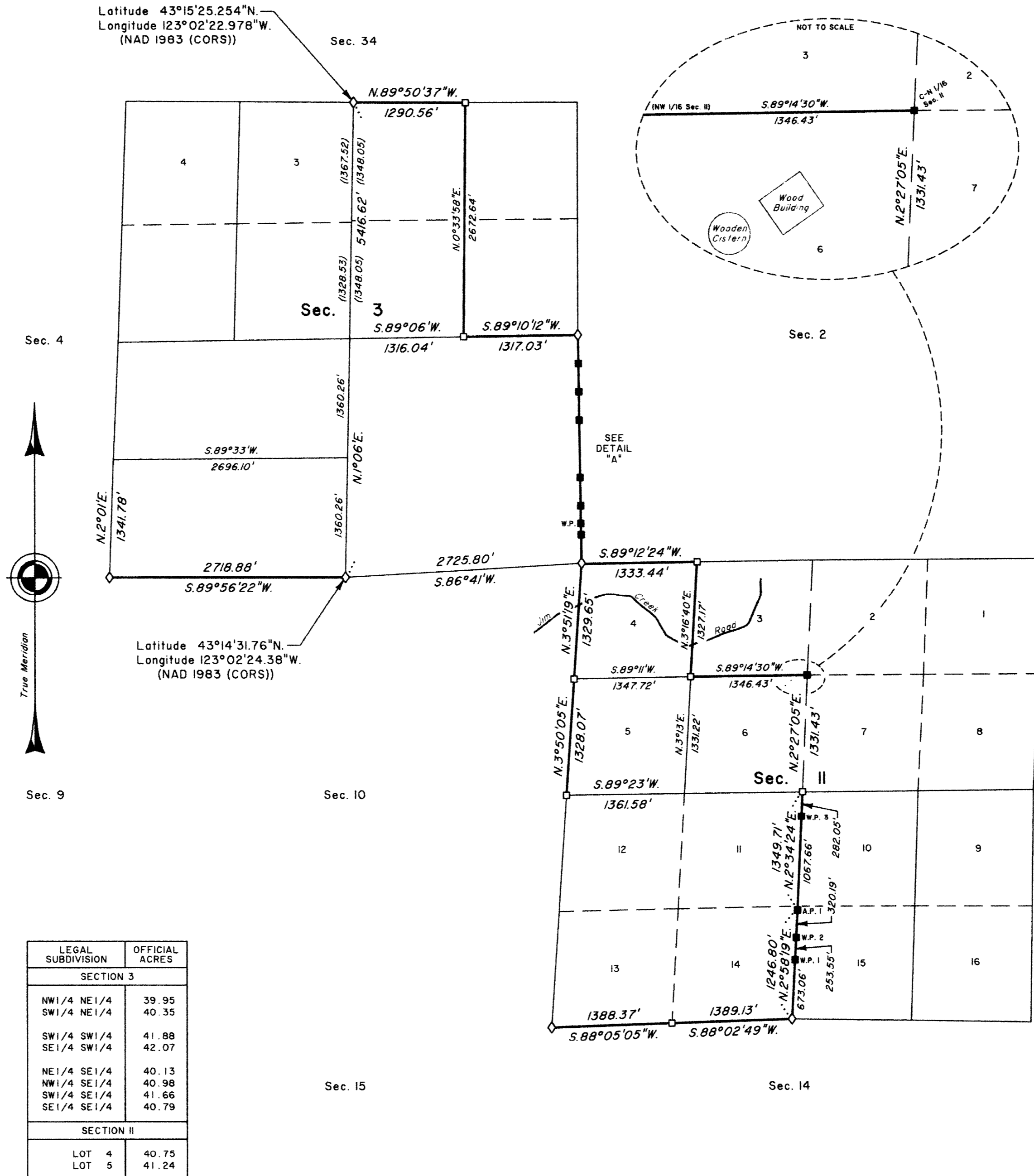
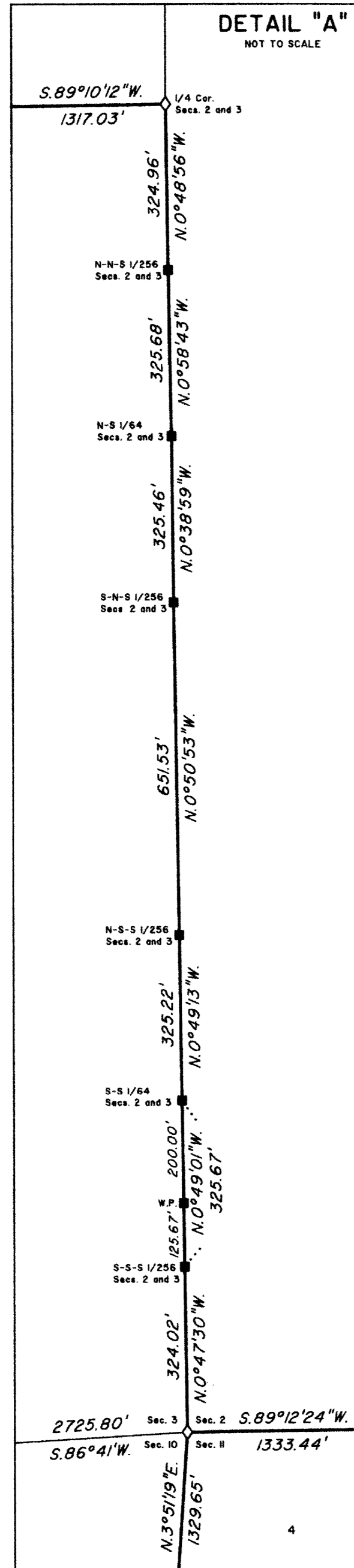
This plat is strictly conformable to the approved field notes, and the survey, having been correctly executed in accordance with the requirements of law and the regulations of this Bureau, is hereby accepted.

For the Director

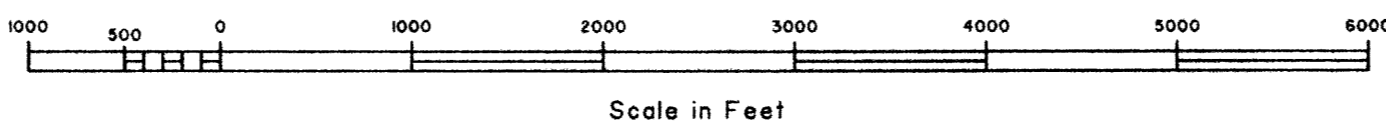
Mary J. M. Hunt

Chief Cadastral Surveyor of Oregon

September 7, 2011
 Date



| LEGAL SUBDIVISION | OFFICIAL ACRES |
|-------------------|----------------|
| SECTION 3 | |
| NW1/4 NE1/4 | 39.95 |
| SW1/4 NE1/4 | 40.35 |
| SW1/4 SW1/4 | 41.88 |
| SE1/4 SW1/4 | 42.07 |
| NE1/4 SE1/4 | 40.13 |
| NW1/4 SE1/4 | 40.98 |
| SW1/4 SE1/4 | 41.66 |
| SE1/4 SE1/4 | 40.79 |
| SECTION II | |
| LOT 4 | 40.75 |
| LOT 5 | 41.24 |



OFFICIALLY FILED: 10/3/2011