

# TOWNSHIP 27 SOUTH, RANGE 3 WEST, OF THE WILLAMETTE MERIDIAN, OREGON

## DEPENDENT RESURVEY

FILED  
 Date: 9/14/2011 By: JC  
 This survey consists of:  
 Map: VOL 57  
 Narrative: PAGES  
 Corner Rpt: 22483-22493  
 DOUGLAS COUNTY  
 SURVEYOR

OFFICIALLY FILED: 7/28/2011

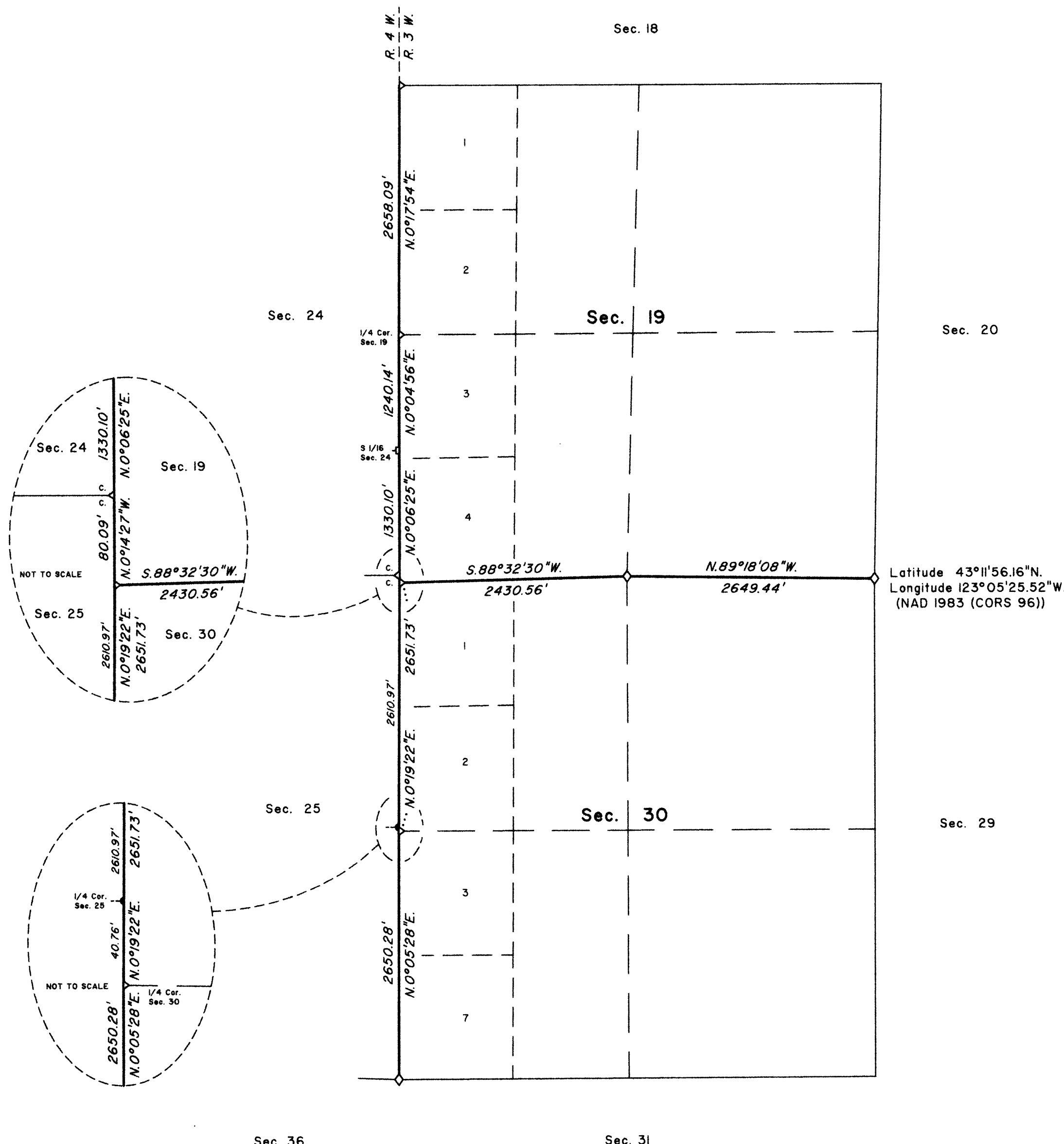
A history of surveys is contained in the field notes.

This plat represents a dependent resurvey of a portion of the west boundary and subdivisional lines, T. 27 S., R. 3 W., Willamette Meridian, Oregon, designed to restore the corners in their true original locations according to the best available evidence.

Measured distances and directions have been adjusted by computer software that incorporates a least squares adjustment routine. The adjusted bearings and distances are reported to the nearest second and 0.01 foot.

The lottings and areas are as shown on the plat approved October 23, 1882.

The survey was executed by A. Bert Skeesick, Cadastral Surveyor, and Robert H. Browning, Surveying Technician, beginning June 30, 2008, and completed September 3, 2008, pursuant to Special Instructions dated February 14, 2008, under Group Number 2189, Oregon.



**LEGEND**

- ◊ Original corner previously remonumented
- Corner previously established or reestablished
- Corner established or reestablished this survey

UNITED STATES DEPARTMENT OF THE INTERIOR  
BUREAU OF LAND MANAGEMENT

Portland, Oregon

This plat is strictly conformable to the approved field notes, and the survey, having been correctly executed in accordance with the requirements of law and the regulations of this Bureau, is hereby accepted.

For the Director

*Maury J. M. Hartzel*

Chief Cadastral Surveyor of Oregon

*May 18, 2011*  
Date

