

TOWNSHIP 27 SOUTH, RANGE 3 WEST, OF THE WILLAMETTE MERIDIAN, OREGON

DEPENDENT RESURVEY

FILED
 Date: 3/30/2010 By: JC
 This survey consists of:
 Map: VOL. 56
 Narrative: PAGES 22029-22043
 Corner Rpt:

DOUGLAS COUNTY
 SURVEYOR

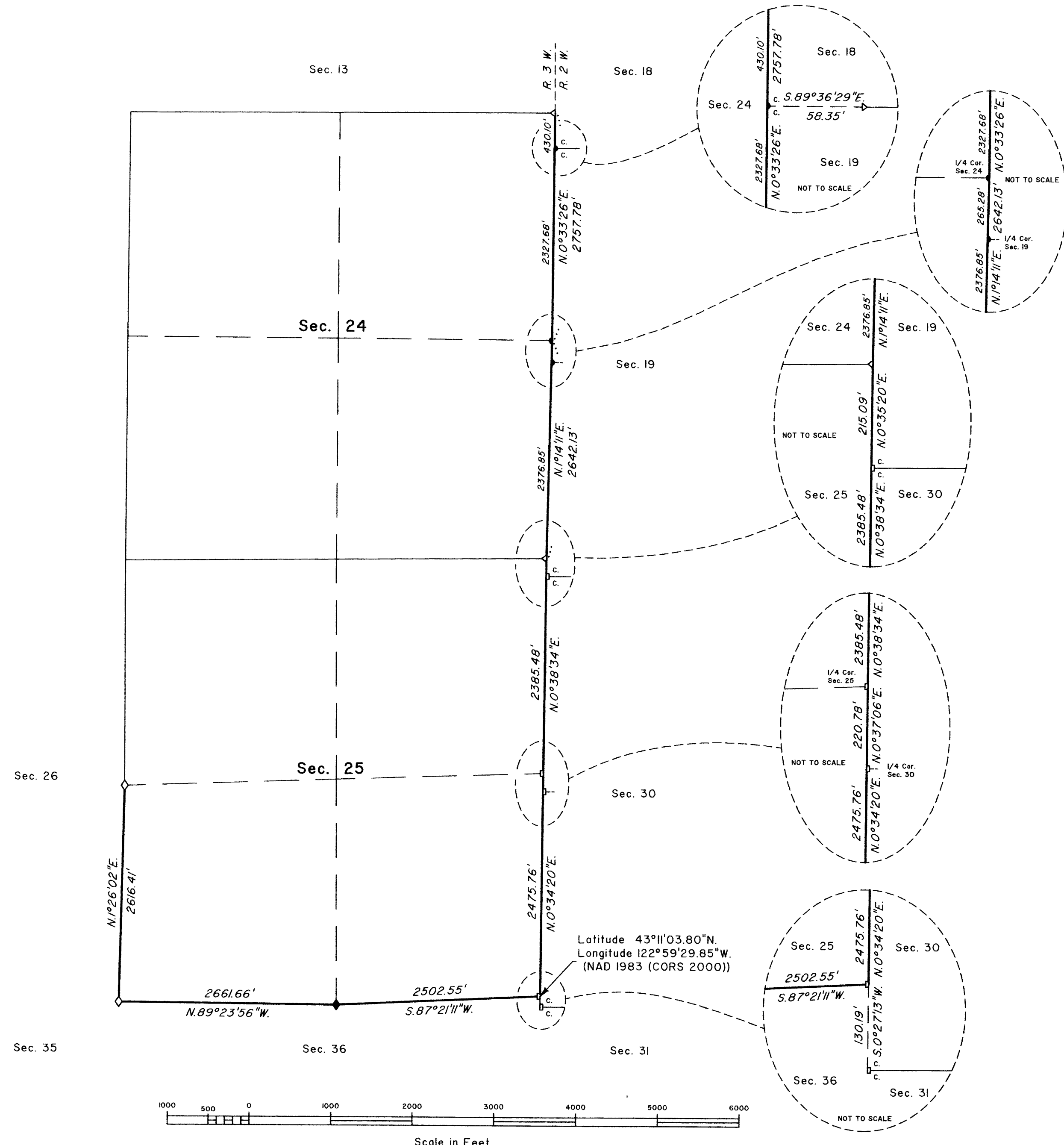
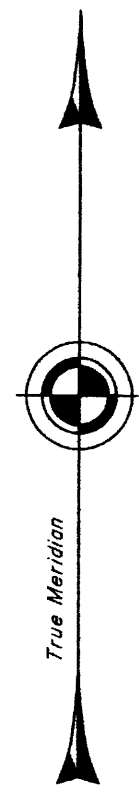
The history of surveys is contained in the field notes.

This plat represents a dependent resurvey of a portion of the east boundary and subdivisional lines, T. 27 S., R. 3 W., Willamette Meridian, Oregon, designed to restore the corners in their original locations according to the best available evidence.

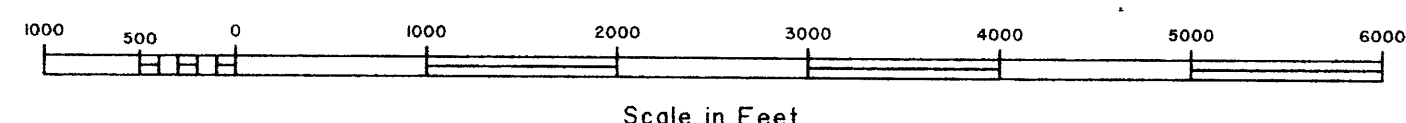
Measured distances and directions have been adjusted by computer software that incorporates a least squares adjustment routine. The adjusted bearings and distances are reported to the nearest second and 0.01 foot.

The lottings and areas are as shown on the plat approved October 23, 1882.

The survey was executed by A. Bert Skeesick and Timothy J. Moore, Cadastral Surveyors, and Robert H. Browning, Surveying Technician, beginning August 5, 2003, and completed July 8, 2004, pursuant to Special Instructions dated July 14, 2003, under Group Number 1968, Oregon.



Latitude 43°11'03.80\"N.
 Longitude 122°59'29.85\"W.
 (NAD 1983 (CORS 2000))



LEGEND	
◇	Original corner previously remonumented
◆	Original corner remonumented this survey
□	Corner previously established or reestablished
●	Corner established or reestablished this survey

UNITED STATES DEPARTMENT OF THE INTERIOR
 BUREAU OF LAND MANAGEMENT

Portland, Oregon

This plat is strictly conformable to the approved field notes, and the survey, having been correctly executed in accordance with the requirements of law and the regulations of this Bureau, is hereby accepted.

For the Director

John P. Fairweather, Jr.
 Chief Cadastral Surveyor of Oregon

January 13, 2010
 Date

OFFICIALLY FILED: 1/26/2010