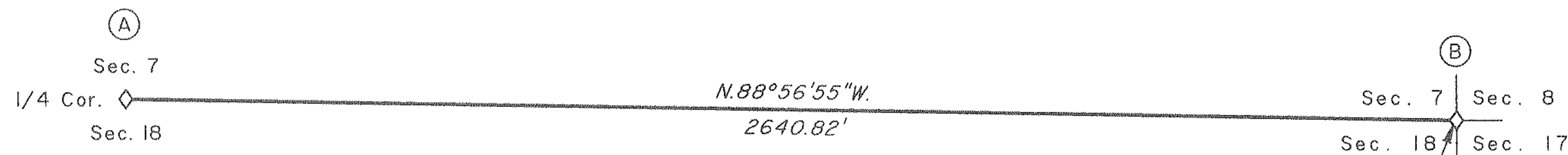
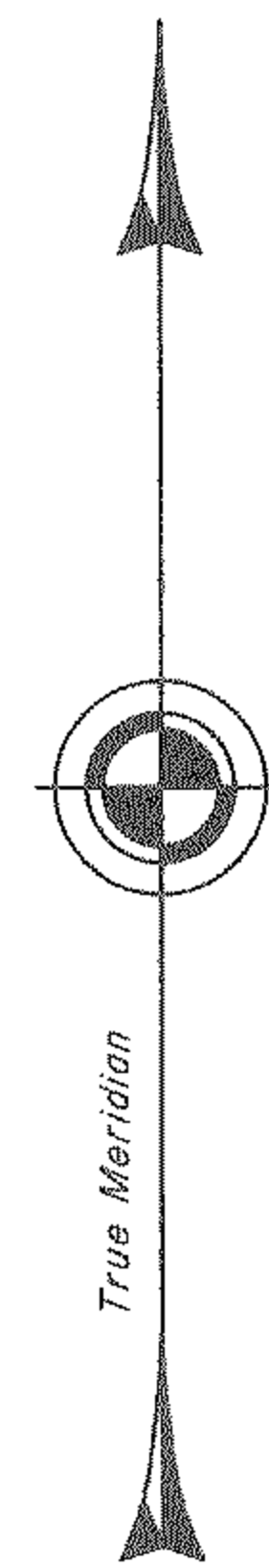


# TOWNSHIP 27 SOUTH, RANGE 3 WEST, OF THE WILLAMETTE MERIDIAN, OREGON

FILED  
Date: 1/08/2010 By: JC  
This survey consists of:  
Map: THIS MAP AND A COPY  
Narrative: IN VOL. 56 PG 21840  
Corner Rpt: \_\_\_\_\_

DOUGLAS COUNTY  
SURVEYOR

## RETRACEMENT AND REHABILITATION



Latitude 43°13'40.64"N.  
Longitude 123°05'23.62"W.  
(NAD 1983 (CORS 96))

(A) The 1/4 sec. cor. of secs. 7 and 18, monumented with an iron post, 2 1/2 ins. diam., firmly set, projecting 2 ins. above the ground, with brass cap mkd.

T 27 S R 3 W  
S 7  
1/4 S 18  
1958

from which the remaining bearing tree mkd. by Corbin

A cedar, 34 ins. diam., bears N. 32° W., 95.7 ft. dist., with a healed blaze.

and a bearing tree mkd. by Larry E. Monrean, Deputy County Surveyor, in 1975, filed in the Douglas County Surveyors Record of Government Corners Renewed, T. 27 S., R. 3 W., Index No. 124, reported by Skeesick

A cedar, 31 ins. diam., bears S. 85° W., 114.5 ft. dist., with a healed blaze.

and bearing trees mkd. by Skeesick

A fir, 14 ins. diam., bears N. 49 1/4° E., 16.6 ft. dist., with a healed blaze.

A fir, 11 ins. diam., bears S. 17 3/4° W., 30.8 ft. dist., with a healed blaze.

(B) The cor. of secs. 7, 8, 17, and 18, perpetuated by the Douglas County Surveyors Office in 1988, filed in the Douglas County Surveyors Record of Government Corners Renewed, T. 27 S., R. 3 W., Index No. 153, monumented with an iron post, 2 1/2 ins. diam., firmly set, projecting 14 ins. above the ground, in a mound of stone, 3 1/2 ft. base to top, with brass cap mkd.

T 27 S R 3 W  
S 7 | S 8  
S 18 | S 17  
1958

from which the remains of bearing trees mkd. by Corbin

A fir, 52 ins. diam., bears S. 65° E., 40.9 ft. dist., with a healed blaze.

A fir, 34 ins. diam., bears S. 49 1/4° W., 25.1 ft. dist., with no marks visible on an open blaze. (Record S. 56 1/4° W.)

and a bearing object mkd. by Rogers and Moore

A rock outcrop, 10 ft. x 10 ft. x 16 ins. high, bears N. 40 3/4° W., 60.1 ft. dist., mkd. X on top.

and a new bearing tree

A madrone, 5 ins. diam., bears N. 23 1/4° E., 34.7 ft. dist., mkd. X BT.

Corner is located in rock debris pushed out of rock quarry.

From this corner, a point established by Glen S. Baughman, Oregon Professional Land Surveyor No. 536 in 1978, filed in the Douglas County Surveyors Office, Map File No. M73-56, bears S. 78° 24' 01" W., 20.3 ft. dist. (record S. 77° 25' 30" W., 20.20 ft.), monumented with an iron post, 1 in. diam., firmly set, projecting 21 ins. above the ground, with brass cap mkd. 1978 OLS 536. The remainder of the cap markings reported by Rogers and Moore were obliterated and the bearing trees mkd. by Baughman were defaced by the Douglas County Surveyors Office in 1988.

This plat represents the entire record of the retracement of a portion of the subdivisional lines, and rehabilitation of the corner of sections 7, 8, 17, and 18, T. 27 S., R. 3 W., Willamette Meridian, Oregon.

A history of surveys pertaining to this retracement and rehabilitation is as follows:

In 1882, Samuel C. Flint, U.S. Deputy Surveyor, completed the survey of the subdivisional lines.

In 1958, Harold D. Corbin, Cadastral Surveyor, resurveyed a portion of the subdivisional lines.

In 1987-88, Wayne L. Rogers, Cadastral Surveyor, and Garry L. Moore, Surveying Technician, resurveyed a portion of the subdivisional lines.

In 2000, A. Bert Skeesick, Cadastral Surveyor, resurveyed a portion of the subdivisional lines and subdivided section 7.

This survey was executed by A. Bert Skeesick, Cadastral Surveyor, and Robert H. Browning, Surveying Technician, beginning March 3, 2008, and completed March 13, 2008, in accordance with the specification set forth in the Manual of Surveying Instructions, 1973; pursuant to Special Instructions dated March 16, 2007, approved March 21, 2007, which provided for the survey included under Group Number 2300, Oregon, and Assignment Instructions dated February 28, 2008. They were assisted by Thomas A. Hollamon, and Karl NMI Krom, Surveying Technicians.

The retracement data were thoroughly verified and only the true line field notes are given hereon. Only those lines bounding or crossing public land were blazed.

The directions of the lines are based on the true meridian as determined by Global Positioning System (GPS) measurements.

An analysis of the unadjusted field data assured a closure not exceeding 1:4000 in error. Measured distances and directions have been adjusted by computer software that incorporates a least squares adjustment routine. The adjusted bearings and distances are reported to the nearest second and 0.01 foot.

Each new bearing tree has a 2 1/2 inch x 1/4 inch magnetic nail (Mag Nail) driven at the base on right side center, unless otherwise noted in the corner description.

The geodetic position shown hereon was determined by a tie utilizing dual frequency carrier phase GPS receivers relative to the National Spatial Reference System.

LEGEND  
◇ Original corner previously remonumented

UNITED STATES DEPARTMENT OF THE INTERIOR  
BUREAU OF LAND MANAGEMENT

Portland, Oregon

The retracement and rehabilitation represented by this plat, having been correctly executed in accordance with the requirements of law and the regulations of this Bureau, is hereby accepted.

For the Director

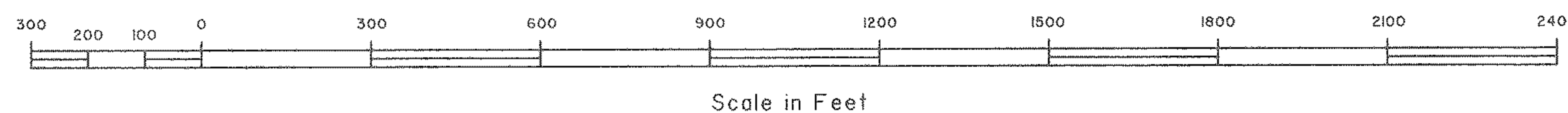
John S. Farnsworth, Acting  
Chief Cadastral Surveyor of Oregon

September 30, 2009  
Date

We, A. Bert Skeesick, Cadastral Surveyor, and Robert H. Browning, Surveying Technician, HEREBY CERTIFY upon honor that in pursuance of Special Instructions bearing date of the 16th day of March, 2007, we have retraced a portion of the subdivisional lines, and rehabilitated the corner of Sections 7, 8, 17, and 18, Township 27 South, Range 3 West, Willamette Meridian Oregon. Said retracement has been executed in strict conformity with said Special Instructions, the Manual of Instructions for the Survey of the Public Lands of the United States, and in specific manner described upon this plat.

*[Signature]*  
Cadastral Surveyor  
*[Signature]*  
Surveying Technician

September 24, 2009  
Date  
September 28, 2009  
Date



OFFICIALLY FILED: 10/16/2009