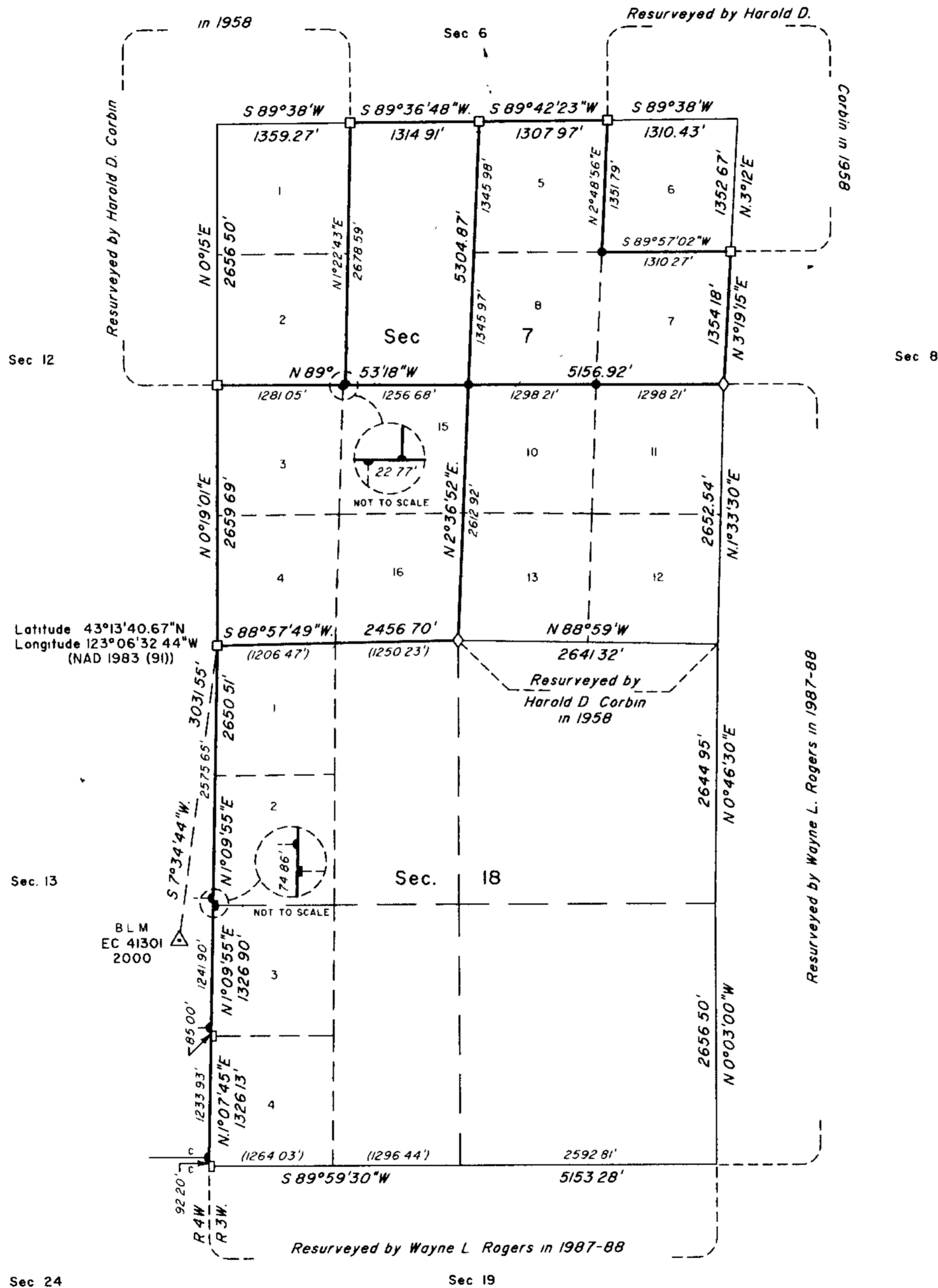


TOWNSHIP 27 SOUTH, RANGE 3 WEST, OF THE WILLAMETTE MERIDIAN, OREGON

DEPENDENT RESURVEY AND SUBDIVISION OF SECTION 7



A history of surveys is contained in the field notes

This plat represents a dependent resurvey of a portion of the west boundary and subdivisional lines, T 27 S, R 3 W., Willamette Meridian, Oregon, designed to restore the corners in their true original locations according to the best available evidence, and the subdivision of section 7

Measured distances and directions have been adjusted by Cadastral Measurement Management (CMM), computer software that incorporates a least squares adjustment routine. The adjusted bearings and distances are reported to the nearest second and 0.01 foot

The lottings and areas are as shown on the plats approved March 26, 1872 and October 23, 1882, and the plat accepted March 16, 1960

The survey was executed by A Bert Skeesick, Cadastral Surveyor, beginning July 24, 2000, and completed December 18, 2000, pursuant to Special Instructions dated August 24, 1999, under Group Number 1925, Oregon

Timber in this area consists of fir, cedar, chinquapin, maple, madrone and pine

The tie to the geodetic control station is reported as mean bearing and sea level distance

LEGEND

- ◊ Original corner previously remonumented
- Corner previously established or reestablished
- Corner previously established or reestablished, remonumented this survey
- Corner established or reestablished this survey

UNITED STATES DEPARTMENT OF THE INTERIOR
BUREAU OF LAND MANAGEMENT

Portland, Oregon March 30, 2001

This plat is strictly conformable to the approved field notes, and the survey, having been correctly executed in accordance with the requirements of law and the regulations of this Bureau, is hereby accepted

For the Director

Wayne L. Rogers

Chief Cadastral Surveyor of Oregon