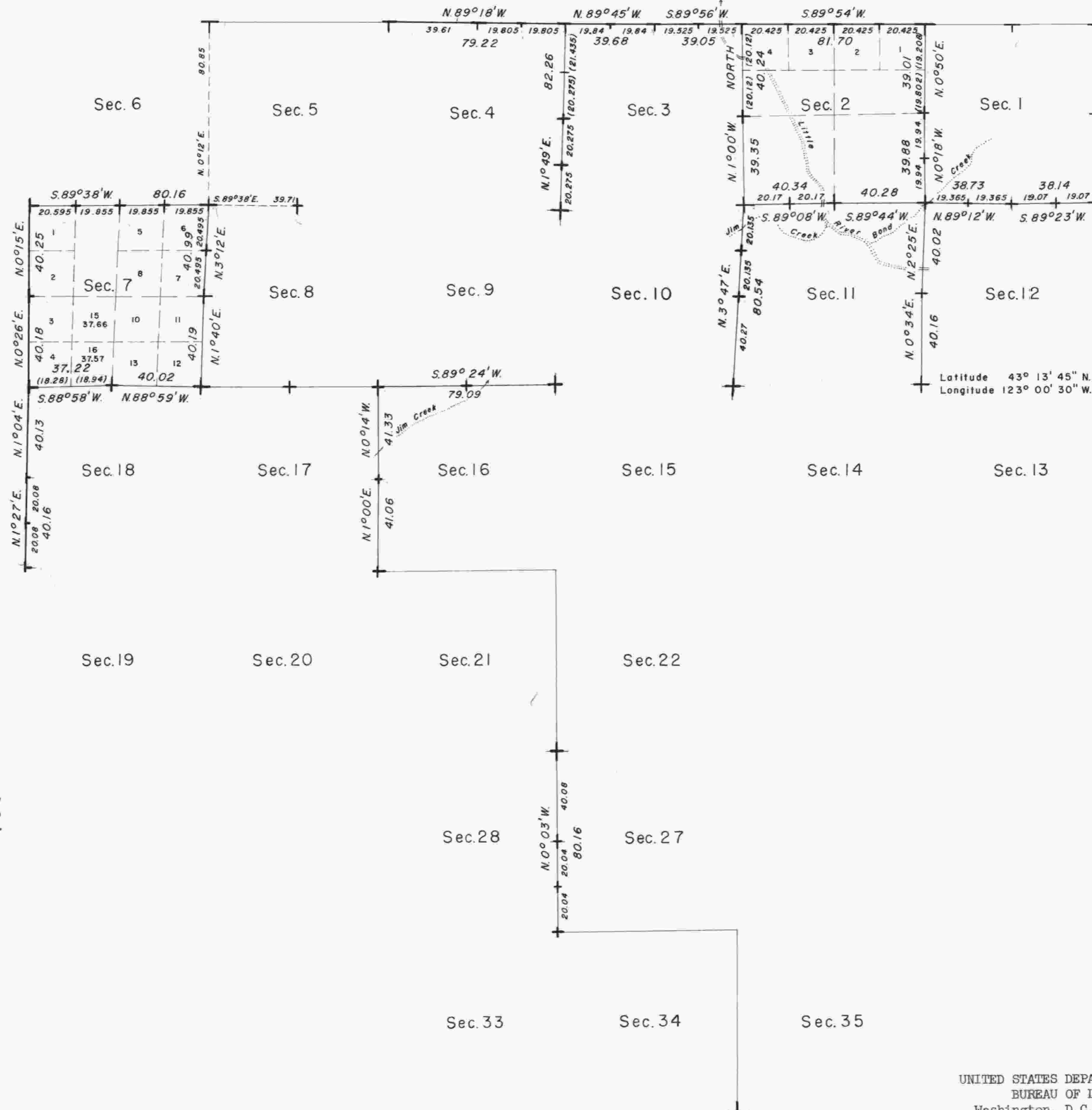



TOWNSHIP 27 SOUTH, RANGE 3 WEST, OF THE WILLAMETTE MERIDIAN, OREGON.

DEPENDENT RESURVEY




 Mean magnetic declination
 20°09' East

The dominant timber species are fir, cedar, hemlock, yew, madrone, maple, white and black oak, and chinquapin.

This plat represents a retracement and reestablishment of a portion of the north and west boundaries and subdivisional lines, and remonumentation of corners as indicated, designed to restore the corners in their true original location according to the best available evidence; and excepting as new or modified subdivisions are shown hereon, the lottings and areas are as shown on the plats approved March 26, 1872, June 24, 1874, and October 23, 1882.

The north and west boundaries surveyed by A. R. Flint in 1855.

A portion of the subdivisional lines surveyed by A. R. Flint and L. L. Williams in 1871.

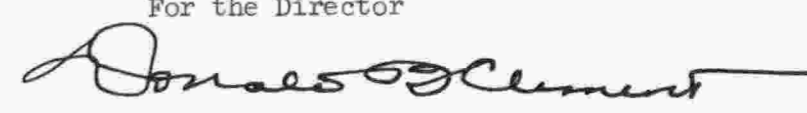
A portion of the subdivisional lines surveyed by S. C. Flint in 1882.

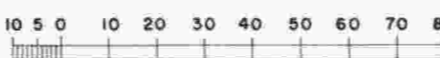
A portion of the west boundary resurveyed by Elmer F. Strickler in 1917.

Dependent resurvey of a portion of the north and west boundaries and subdivisional lines, and remonumentation of original corners of Township 27 South, Range 3 West, Willamette Meridian, Oregon, executed by Harold D. Corbin, August 20 to November 3, 1958, under Special Instructions dated May 3, 1957, and July 15, 1958, which provide for the surveys included under Group Nos. 350 and 412, Oregon.

UNITED STATES DEPARTMENT OF THE INTERIOR
 BUREAU OF LAND MANAGEMENT
 Washington, D.C. March 16, 1960

This plat is strictly conformable to the approved field notes, and the survey, having been correctly executed in accordance with the requirements of law and the regulations of this Bureau, is hereby accepted.

For the Director

 Cadastral Engineering Staff Officer


 Chains
 Area resurveyed - 1,277.39 Acres
 + Corners remonumented in 1958