

FILED

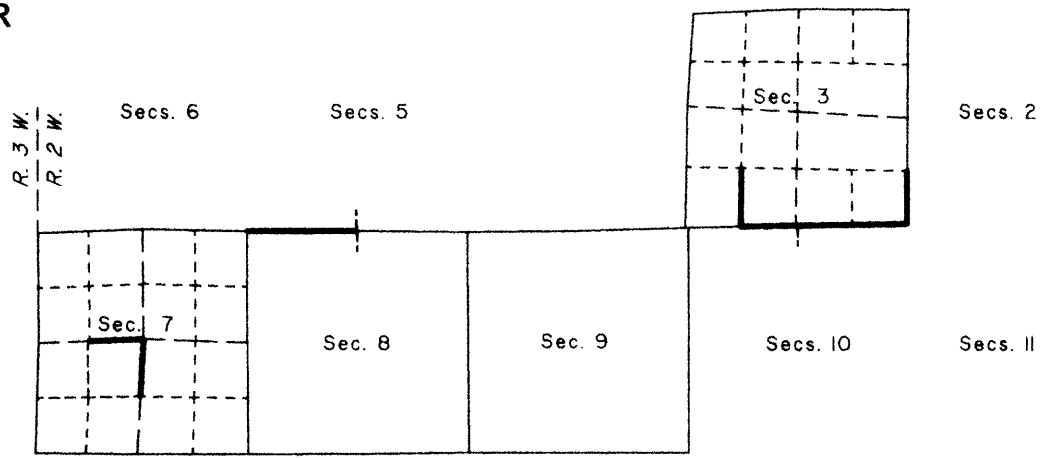
Date: 1/29/2013 By: JC
This survey consists of:
Map: VOL. 58 PAGE
Narrative: 22947-22948
Corner Rpt: THIS PLAT REPRESENTS THE ENTIRE RECORD OF THE DEPENDENT RESURVEY

TOWNSHIP 27 SOUTH, RANGE 2 WEST, OF THE WILLAMETTE MERIDIAN, OREGON

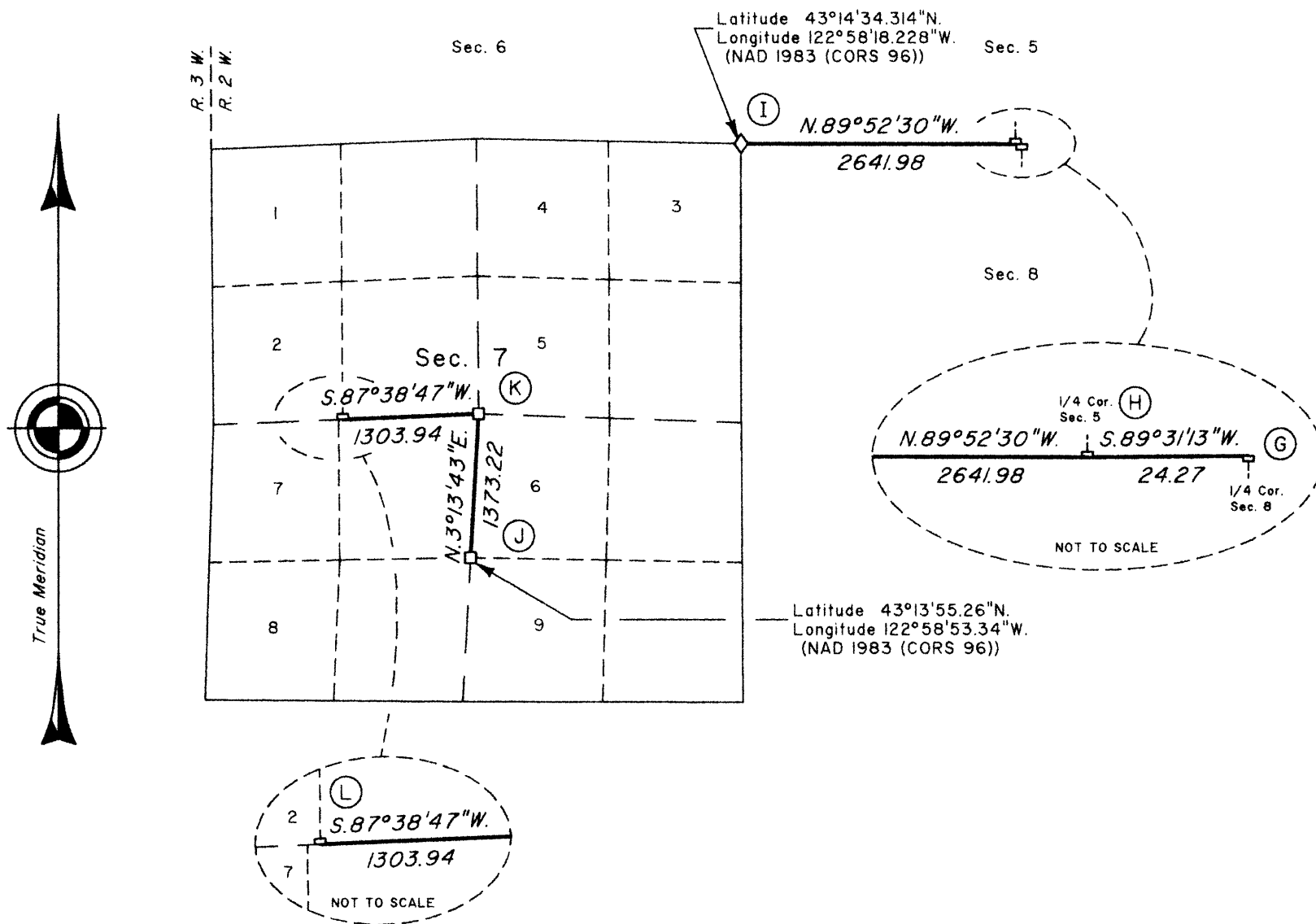
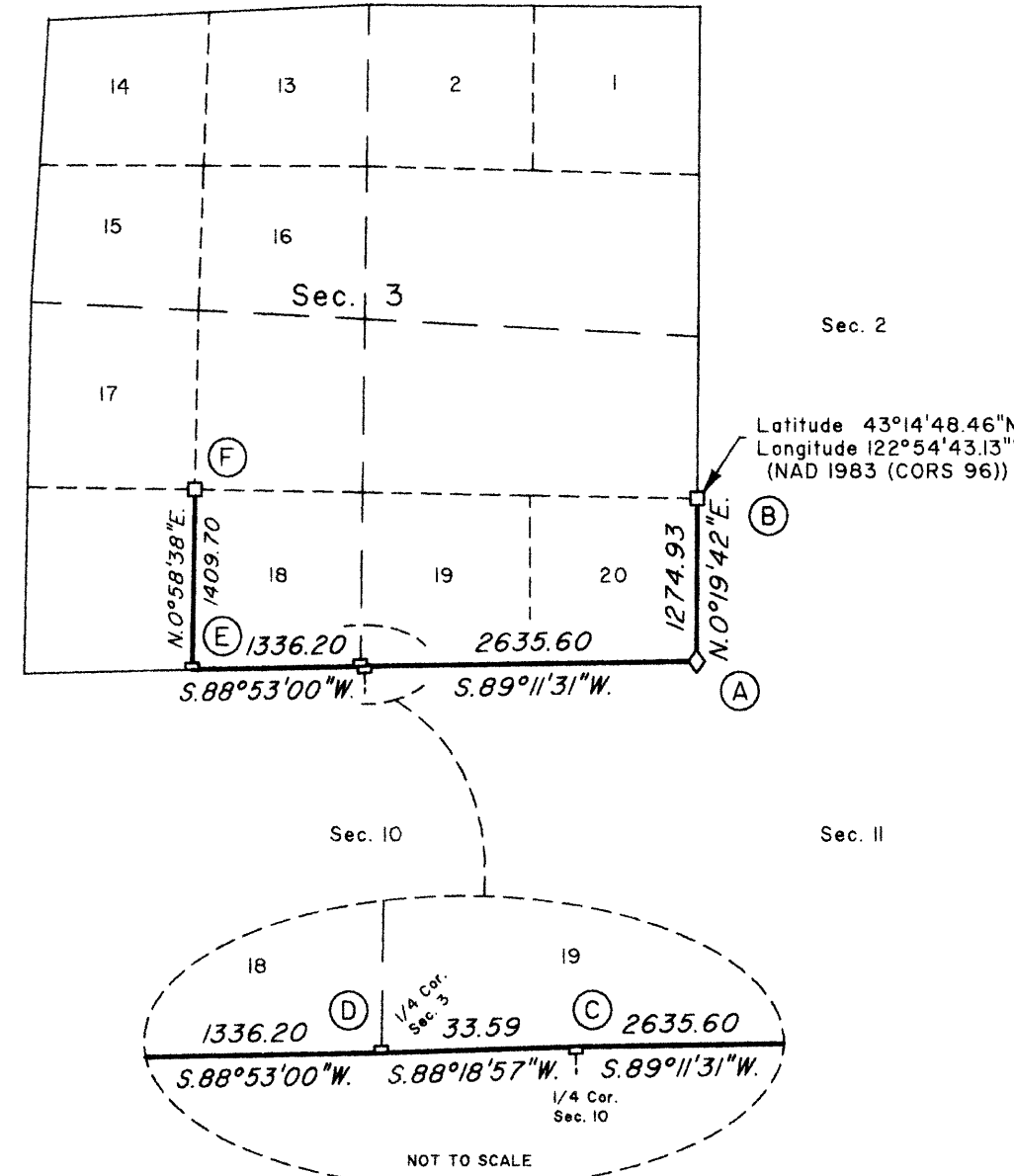
SHEET 1 OF 2

DOUGLAS COUNTY SURVEYOR

RETRACEMENT



LOCATION DIAGRAM (NOT TO SCALE)



This plat constitutes the entire record of the retracement of portions of the subdivisional lines and subdivision of section lines in sections 3 and 7, Township 27 South, Range 2 West, Willamette Meridian, Oregon.

The directions of the lines are based on the true meridian as determined by a combination of Global Positioning System (GPS) techniques and direct solar observation, carried forward by sustained angulation using conventional survey techniques. All measurements along the lines were derived through the use of GPS and conventional survey techniques. Measured distances and directions have been adjusted by computer software that incorporates a least squares adjustment routine. The adjusted mean bearings and mean horizontal ground elevation distances are reported to the nearest second and 0.01 foot.

The lines of the official original surveys and resurveys were retraced and search was made for all corners, lines, other calls of the record, and, where available, collateral evidence of local surveys and corners. Identified corners were perpetuated in their original positions. The retracement data were thoroughly verified and only the true line field data are given hereon.

Each new bearing tree has a 2 1/2 x 1/4 in. magnetic nail (Mag Nail) driven at the base on right side center, unless otherwise noted in the corner description.

Only those lines bounding Federal interest land were blazed.

The geographic positions shown hereon were determined by ties from temporary GPS control points and by direct occupation, utilizing dual frequency, carrier phase GPS receivers, and processed using the National Geodetic Survey's Online Positioning User Service (OPUS).

The survey was executed in accordance with the specification set forth in the Manual of Surveying Instructions (2009), and the special instructions approved April 28, 2010, for Group No. 2500, Administrative File No. 1105, Oregon, by Kenneth W. Saveland, Cadastral Surveyor, beginning August 25, 2011, and completed November 14, 2011. He was assisted by Robert NMI Durning and Thomas A. Hollamon, Surveying Technicians.

The history of official surveys pertaining to this retracement is as follows:

In 1882, Samuel C. Flint, U.S. Deputy Surveyor, surveyed a portion of the subdivisional lines as shown on the official plat of survey approved December 7, 1882.

In 1907, Charles E. Roberts, U.S. Deputy Surveyor, retraced a portion of the subdivisional lines and surveyed a portion of the subdivisional lines as shown on the official plat of survey approved January 23, 1908.

In 1957, Harold D. Corbin, Cadastral Surveyor, resurveyed portions of the north boundary and subdivisional lines as shown on the official plat of survey accepted May 7, 1959 (Plat suspended February 21, 1978).

In 1971, Peter A. Peterson and Daniel L. Berry, Cadastral Surveyors, resurveyed a portion of the subdivisional lines and subdivided section 8 as shown on the plat of official survey accepted March 8, 1973.

In 1978, James E. Jelley, Cadastral Surveyor, correctively resurveyed a portion of the subdivisional lines as shown on the official plat of survey accepted January 28, 1980.

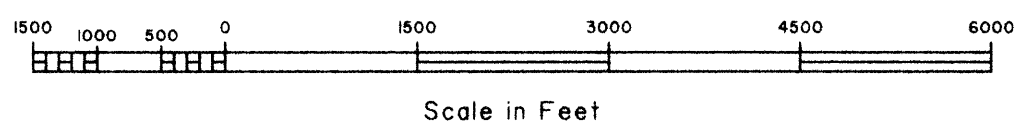
In 1979, Wayne L. Rogers, Cadastral Surveyor, resurveyed portions of the west boundary and subdivisional lines and subdivided sections 3, 6, and 7, as shown on the official plat of survey accepted June 16, 1983.

The following local surveys filed in the Douglas County Surveyor's Office are referred to in subsequent corner descriptions and are referenced by surveyor's last name, official title or Professional Land Surveyor (PLS) number, and year.

Date	Name and Registration Number	File Number
1962	Milo E. Godfrey Deputy Co. Surveyor	CS 49/28
1968	Douglas County Surveyor's Office	CS 54/40
1978	Romanso E. Ware PLS 1005	M70-24
1984	Ronald G. Geisler PLS 1988	M 90-55
1989	Glen S. Baughman PLS 536	CS 63/85

I, Kenneth W. Saveland, Cadastral Surveyor, HEREBY CERTIFY upon honor, that in pursuance of special instructions bearing the approval date of the 28th day of April, 2010, and assignment instructions bearing the date of the 8th day of July, 2011, I have retraced portions of the subdivisional lines and subdivision of section lines in sections 3 and 7, Township 27 South, Range 2 West, Willamette Meridian, Oregon, which is represented upon this plat as having been executed by me and under my direction; and that said survey has been made in strict conformity with said special instructions, the Manual of Surveying Instructions, and in the specific manner described on this plat.

Kenneth W. Saveland
Cadastral Surveyor
November 1, 2012
Date



D.C.W.

LEGEND

- ◊ Original corner previously remonumented
- Corner previously established or reestablished

UNITED STATES DEPARTMENT OF THE INTERIOR
BUREAU OF LAND MANAGEMENT
Portland, Oregon

The survey represented by this plat, having been correctly executed in accordance with the requirements of law and the regulations of this Bureau, is hereby accepted.

For the Director
Mary J. M. Hartz
Chief Cadastral Surveyor of Oregon

November 16, 2012
Date

OFFICIALLY FILED: 1/29/2013

FILED

Date: 1/29/2013 By: JC
This survey consists of:
Map: VOL. 58 PAGE
Narrative: 22947-22948
Corner Rpt: THIS PLAT REPRESENTS THE ENTIRE RECORD OF THE DEPENDENT RESURVEY

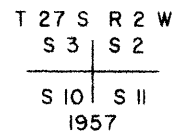
TOWNSHIP 27 SOUTH, RANGE 2 WEST, OF THE WILLAMETTE MERIDIAN, OREGON

SHEET 2 OF 2

DOUGLAS COUNTY SURVEYOR

RETRACEMENT

(A) The cor. of secs. 2, 3, 10, and 11, perpetuated by Boughman, PLS 536, in 1989, monumented with an iron post, 2 1/2 ins. diam., firmly set, projecting 2 ins. above the top of a mound of stone, 3 ft. base, 1 ft. high, with brass cap mkd.



from which the remains of bearing trees mkd. by Roberts

A sawed, decayed fir stump, 39 ins. diam., bears N. 19° E., 54.8 ft. dist., with scribe marks 2W B visible on an open blaze.

A decayed fir stump, size indeterminate, bears S. 50° E., 62.0 ft. dist., with fragmentary scribe marks visible on an open blaze.

A cedar, 30 ins. diam., bears N. 59° W., 49.5 ft. dist., with a healed blaze.

and the remains of a bearing tree mkd. by Corbin

A fir, 24 ins. diam., bears N. 60° E., 57.4 ft. dist., with a healed blaze.

A decayed cedar snag, size indeterminate, bears S. 28 1/2° E., 19.8 ft. dist., with no marks visible.

A hemlock stump, size indeterminate, bears N. 57 1/2° W., 21.8 ft. dist., with no marks visible.

and the remains of a bearing tree mkd. by Milo E. Godfrey, Deputy County Surveyor, in 1962, misidentified as mkd. by James W. Byron, Deputy County Surveyor, in 1960, by Jelley

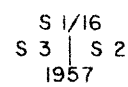
A decayed hemlock stump, size indeterminate, bears S. 21 1/2° W., 29.7 ft. dist., with scribe marks R2W S10 CS visible on an open blaze, lying downhill of which is the fallen, sawed, decayed, hemlock trunk, size indeterminate, with no marks visible. (Record, N. 21 1/2° W.)

and new bearing trees

A fir, 12 ins. diam., bears S. 51 1/2° E., 38.4 ft. dist., mkd. T27S R2W S11 BT.

A fir, 5 ins. diam., bears S. 17 1/4° W., 47.1 ft. dist., mkd. T27S R2W S10 BT.

(B) The S 1/16 sec. cor. of secs. 2 and 3, perpetuated by the Douglas County Surveyor's Office in 1968, monumented with an iron post, 2 1/2 ins. diam., firmly set, projecting 5 ins. above ground, with brass cap mkd.



from which the remains of bearing trees mkd. by Corbin

A sawed cedar stump, 31 ins. diam., bears S. 37° E., 32.3 ft. dist., with a healed blaze.

A fir, 64 ins. diam., bears S. 66 1/2° W., 66.7 ft. dist., with a healed blaze.

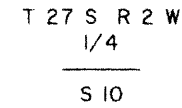
and the remains of bearing trees mkd. by the Douglas County Surveyor's Office

A fir snag, 21 ins. diam., bears N. 64° W., 32.5 ft. dist., with a healed blaze.

and a new bearing tree

A fir, 5 ins. diam., bears S. 69 1/2° E., 52.2 ft. dist., mkd. X BT.

(C) The 1/4 sec. cor. of sec. 10 only, monumented with an iron post, 2 1/2 ins. diam., firmly set, projecting 4 ins. above ground, with brass cap mkd.



1978 RLS 1005

From which the remains of a bearing tree mkd. by Ware, PLS 1005, in 1978

A fir snag, 23 ins. diam., bears S. 81 3/4° W., 36.6 ft. dist., with a healed blaze. (Record, S. 85° W., 45.5 ft. dist.)

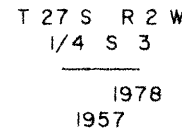
and a new bearing tree

A fir, 10 ins. diam., bears S. 45 3/4° W., 11.1 ft. dist., mkd. 1/4 S10 BT.

From this cor., a point established by Shrum, PLS 4287, in 1965, bears S. 22° 03' 56" E., 7.73 ft. dist., monumented with an iron post, 3/4 ins. diam., firmly set, projecting 10 ins. above ground, with aluminum cap mkd. U.S.P.C. PROPERTY COR. T.27S. R2W. 1/4 SEC. 10 RE. 4287, from which the remains of a bearing tree mkd. by Shrum

A roothole bears S. 8° E., 38.0 ft. dist., uphill of which is a fallen hemlock trunk, 9 ins. diam., with scribe marks / BT visible on an open blaze.

(D) The 1/4 sec. cor. of sec. 3 only, monumented with an iron post, 2 1/2 ins. diam., firmly set, projecting 6 ins. above a collar of stone, with brass cap mkd.



from which the remaining bearing tree mkd. by Corbin

A fir, 24 ins. diam., bears N. 42 3/4° W., 40.6 ft. dist., with a healed blaze.

and the remains of a bearing tree mkd. by the Douglas County Surveyor's Office in 1968

A roothole bears N. 2° E., 64.0 ft. dist.

and the remains of a bearing tree mkd. by Jelley

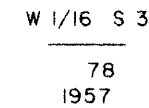
A fir stump, 23 ins. diam., bears N. 47 1/4° E., 47.9 ft. dist., downhill of which is a fallen fir trunk, 23 ins. diam., with a healed blaze.

and a new bearing tree

A fir, 9 ins. diam., bears N. 21° E., 19.9 ft. dist., mkd. 1/4 S3 BT.

Corner is located 65 ft. E. of a creek, 3 ft. wide, course N. 25° W.

(E) The W 1/16 sec. cor. of sec. 3 only, monumented with an iron post, 2 1/2 ins. diam., firmly set, projecting 4 ins. above a collar of stone, with brass cap mkd.



from which the remains of bearing trees mkd. by Corbin

A fir snag, 6 ins. diam., bears N. 43° W., 20.5 ft. dist., with a healed blaze. (Record, N. 45 3/4° W.)

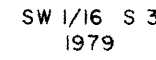
A fir, 34 ins. diam., bears N. 6 1/2° W., 31.7 ft. dist., with a healed blaze.

and a bearing tree mkd. by Jelley

A fir, 17 ins. diam., bears N. 54 1/2° E., 38.3 ft. dist., with a healed blaze. (Record, N. 52 1/2° E.)

Corner is located 225 ft. W. of a gravel road, 13 ft. wide, bears N. 5° E. and S. 5° W.

(F) The SW 1/16 sec. cor. of sec. 3, monumented with an iron post, 2 1/2 ins. diam., firmly set, projecting 6 ins. above ground, with brass cap mkd.



from which the bearing trees mkd. by Rogers

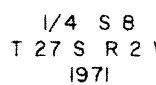
A fir, 19 ins. diam., bears S. 47 1/2° E., 31.7 ft. dist., with a healed blaze.

A fir, 14 ins. diam., bears N. 51° W., 16.5 ft. dist., with a healed blaze.

From this cor., a point established by person(s) unknown bears S. 13° 26' 55" W., 3.99 ft. dist., monumented with an iron pipe, 1/2 in. diam., firmly set, projecting 6 ins. above ground and was not utilized during the course of this survey.

Also from this cor., a point established by person(s) unknown bears N. 41° 24' 44" W., 4.09 ft. dist., monumented with an iron pipe, 1/2 in. diam., firmly set, projecting 14 ins. above ground and was not utilized during the course of this survey.

(G) The 1/4 sec. cor. of sec. 8 only, perpetuated by Geisler, PLS 1988, in 1984, monumented with an iron post, 2 1/2 ins. diam., firmly set, projecting 10 ins. above ground, with brass cap mkd.



from which a bearing tree mkd. by Peterson and Berry

A forked maple, 9 ins. diam., bears S. 33° E., 11.2 ft. dist., with a healed double blaze.

and the remains of a bearing tree mkd. Geisler

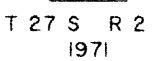
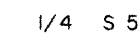
A sawed maple stump, 11 ins. diam., bears S. 16° E., 38.6 ft. dist., with a healed blaze.

and a new bearing tree

A fir, 4 ins. diam., bears S. 68 3/4° E., 7.7 ft. dist., mkd. X BT

Add a collar of stone around the iron post.

(H) The 1/4 sec. cor. of sec. 5 only, monumented with an iron post, 2 1/2 ins. diam., firmly set, projecting 4 ins. above ground, with brass cap mkd.



from which the remains of a bearing tree mkd. by Peterson and Berry

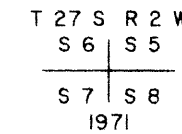
A fir snag, 44 ins. diam., bears N. 78 1/2° W., 55.3 ft. dist., with fragmentary scribe marks visible on a partially healed, decayed blaze. (Record, N. 81° W., 58.7 ft. dist.)

and new bearing trees

A madrone, 12 ins. diam., bears N. 83 1/2° W., 30.4 ft. dist., mkd. 1/4 S5 BT in the bark.

A fir, 17 ins. diam., bears N. 19 1/2° W., 18.4 ft. dist., mkd. 1/4 S5 BT.

(I) The cor. of secs. 5, 6, 7, and 8, monumented with a brass tablet, cemented in a rock outcropping, 2 ft. x 4 ft., 2 ft. high, with brass cap mkd.



from which the remains of bearing trees mkd. by Roberts

A fir snag, 35 ins. diam., bears N. 84° E., 127.3 ft. dist., with a previously chopped open and now healed blaze. (Record, 93.1 ft. dist.)

A sawed fir stump, 54 ins. diam., bears S. 65° E., 90.4 ft. dist., with a healed blaze.

A fir, 50 ins. diam., bears S. 23 1/2° W., 97.3 ft. dist., with a healed blaze. (Record, 101.6 ft. dist.)

A fir, 35 ins. diam., bears N. 31° W., 73.9 ft. dist., with a healed blaze. (Record, 70.6 ft. dist.)

and bearing trees mkd. by the Douglas County Surveyor's Office in 1968

A fir, 13 ins. diam., bears N. 50° E., 7.9 ft. dist., with a healed double blaze.

A fir, 19 ins. diam., bears S. 2° E., 23.8 ft. dist., with a healed double blaze.

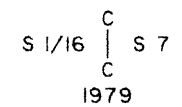
A fir, 18 ins. diam., bears S. 78° W., 9.2 ft. dist., with a healed double blaze.

A fir, 14 ins. diam., bears N. 60° W., 11.2 ft. dist., with a healed double blaze.

and reference monument set by the Douglas County Surveyor's Office in 1968

An iron post, 1 1/4 ins. diam., firmly set, projecting 8 ins. above a collar of stone, bears N. 80° 51' 42" W., 119 ft. dist., with brass cap mkd. COUNTY SURVEYORS OFFICE T27S R2W S5 S6 S7 S8 1968. (Record, West, 0.99 ft. dist.)

(J) The center S 1/16 sec. cor. of sec. 7, monumented with an iron post, 2 1/2 ins. diam., firmly set, projecting 2 ins. above a mound of stone, 3 ft. base, 1 ft. high, with brass cap mkd.



from which bearing trees mkd. by Rogers

A fir, 15 ins. diam., bears N. 14 1/2° E., 6.3 ft. dist., with a healed blaze.

A fir, 20 ins. diam., bears S. 43 1/2° W., 8.6 ft. dist., with a healed blaze.

From the cor., N. 3° 13' 43" E., on the N. and S. centerline, at:

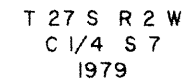
45 ft. dist., Little River Road, asphalt surfaced, 22 ft. wide, bears N. 85° E. and S. 85° W.

90.4 ft. dist., cor. post of barbed and woven wire fence bears East, 1.7 ft. dist., fence lines extend N. 7° E. and S. 80° W.

350 ft. dist., dirt road, 9 ft. wide, bears N. 30° W. and S. 30° E.

401.4 ft. dist., end post of barbed and woven wire fence bears East, 37.5 ft. dist., fence line extends S. 30° W.

(K) The center 1/4 sec. cor. of sec. 7, monumented with an iron post, 2 1/2 ins. diam., firmly set, projecting 2 ins. above a mound of stone, 4 ft. base, 5 ft. high, built into a steep SE. slope, with brass cap mkd.



from which the bearing trees mkd. by Rogers

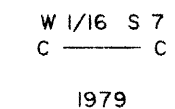
A fir, 22 ins. diam., bears S. 1/2° E., 27.7 ft. dist., with a healed blaze.

A fir, 33 ins. diam., bears S. 89 1/2° W., 27.7 ft. dist., with a healed blaze.

From this cor., a point established by person(s) unknown bears S. 3° 22' 03" W., 269.12 ft. dist., monumented with an angle iron, 3/4 in. wide on a side, loosely set, projecting 14 ins. above ground, and was not utilized during the course of this survey.

Corner is located 100 ft. N. of a spur, slopes S. 55° W.; and 15 ft. N. of a ravine, drains S. 55° W.

(L) The center W 1/16 sec. cor. for the NW 1/4 of sec. 7 only, monumented with an iron post, 2 1/2 ins. diam., firmly set, projecting 7 ins. above ground, with brass cap mkd.



from which the remains of bearing trees mkd. by Rogers

A fir, 13 ins. diam., bears N. 74 1/2° E., 27.7 ft. dist., with a healed double blaze.

A sawed, decayed fir stump, 17 ins. diam., bears N. 40° W., 17.2 ft. dist., with a healed blaze.

and a new bearing tree

A fir, 19 ins. diam., bears N. 18 3/4° W., 29.6 ft. dist., mkd. CW 1/16 S7 BT.

UNITED STATES DEPARTMENT OF THE INTERIOR BUREAU OF LAND MANAGEMENT

Portland, Oregon

The survey represented by this plat, having been correctly executed in accordance with the requirements of law and the regulations of this Bureau, is hereby accepted.

For the Director

Mary J. M. Hartzel

Chief Cadastral Surveyor of Oregon

November 16, 2012

Date

OFFICIALLY FILED: 1/19/2013