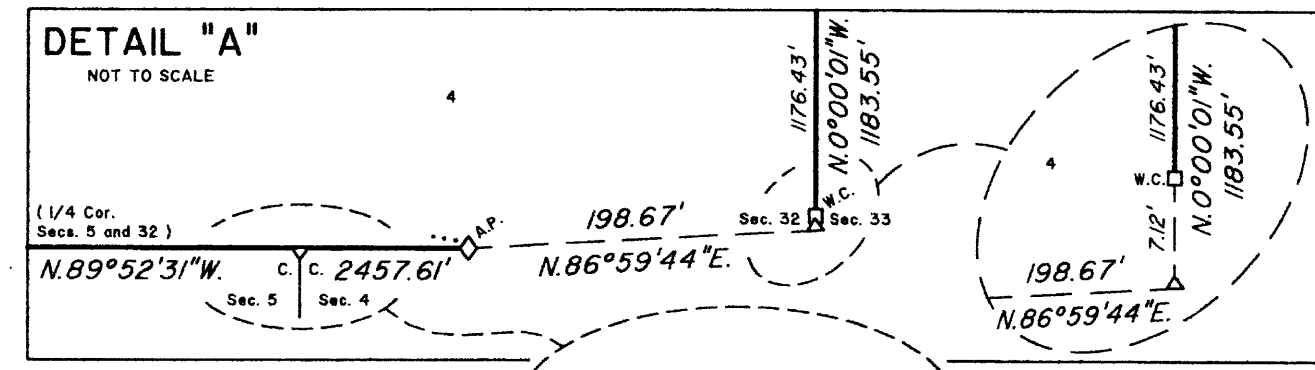
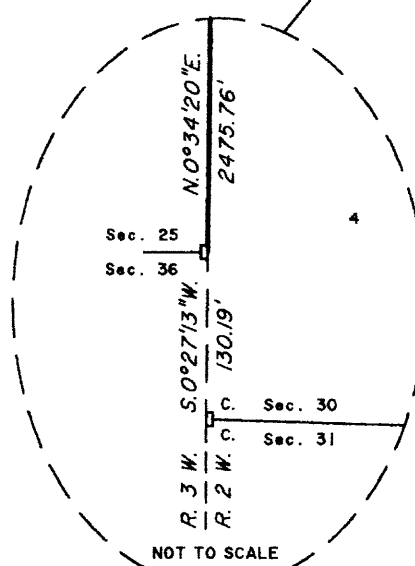
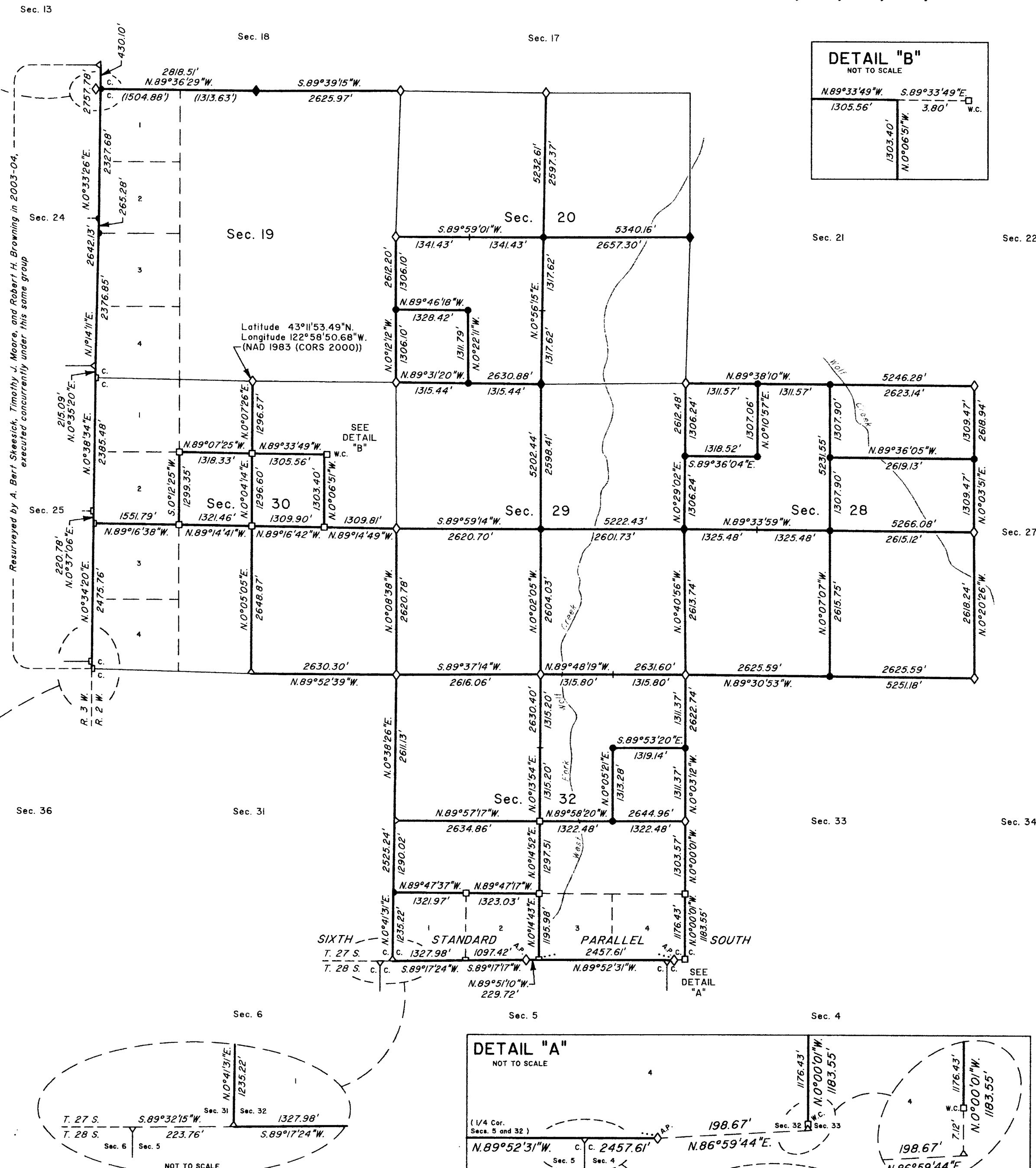
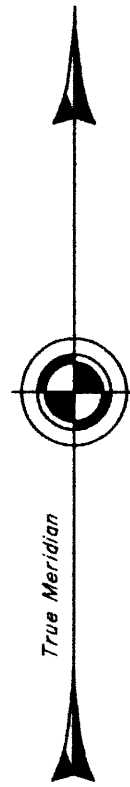
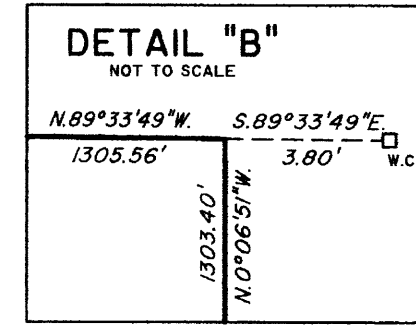
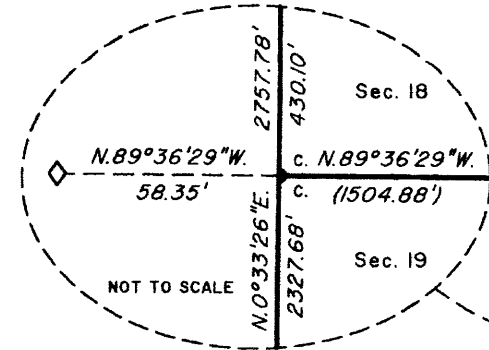


# TOWNSHIP 27 SOUTH, RANGE 2 WEST, OF THE WILLAMETTE MERIDIAN, OREGON

## DEPENDENT RESURVEY AND SUBDIVISION OF SECTIONS 20, 28, 29, 30, AND 32

FILED  
 Date: 3/30/2010 By: JC  
 This survey consists of:  
 Map: VOL. 56  
 Narrative: PAGES 21977-22028  
 Corner Rpt: \_\_\_\_\_

DOUGLAS COUNTY  
 SURVEYOR



A history of surveys is contained in the field notes.

This plat represents the dependent resurvey of a portion of the south boundary (Sixth Standard Parallel South), and subdivisional lines, T. 27 S., R. 2 W., Willamette Meridian, Oregon, designed to restore the corners in their true original locations according to the best available evidence, and the subdivision of sections 20, 28, 29, 30, and 32.

Measured distances and directions have been adjusted by computer software that incorporates a least squares adjustment routine. The adjusted bearings and distances are reported to the nearest second and 0.01 foot.

The lottings and areas are as shown on the plat approved April 26, 1913.

This survey was executed by A. Bert Skeesick and Timothy J. Moore, Cadastral Surveyors and Robert H. Browning, Surveying Technician, beginning August 5, 2003, and completed July 8, 2004, pursuant to Special Instructions dated July 14, 2003, and Supplemental Special Instructions dated February 26, 2004, under Group Number 1968, Oregon.

**LEGEND**

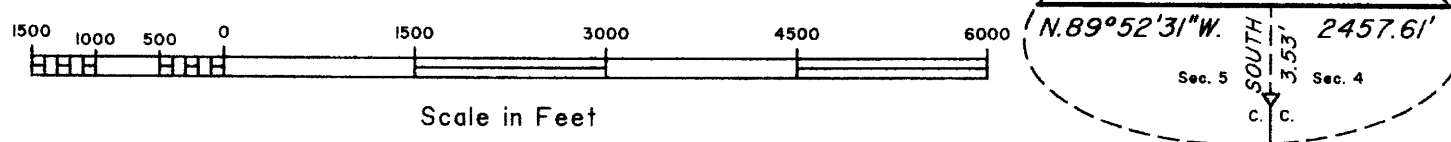
- ◊ Original corner previously remonumented
- ◆ Original corner remonumented this survey
- Corner previously established or reestablished
- Corner previously established or reestablished; remonumented this survey
- Corner established or reestablished this survey

UNITED STATES DEPARTMENT OF THE INTERIOR  
 BUREAU OF LAND MANAGEMENT  
 Portland, Oregon

This plat is strictly conformable to the approved field notes, and the survey, having been correctly executed in accordance with the requirements of law and the regulations of this Bureau, is hereby accepted.

For the Director  
*John P. Kinnaman, Acting*  
 Chief Cadastral Surveyor of Oregon

*January 12, 2010*  
 Date



OFFICIALLY FILED: 1/26/2010