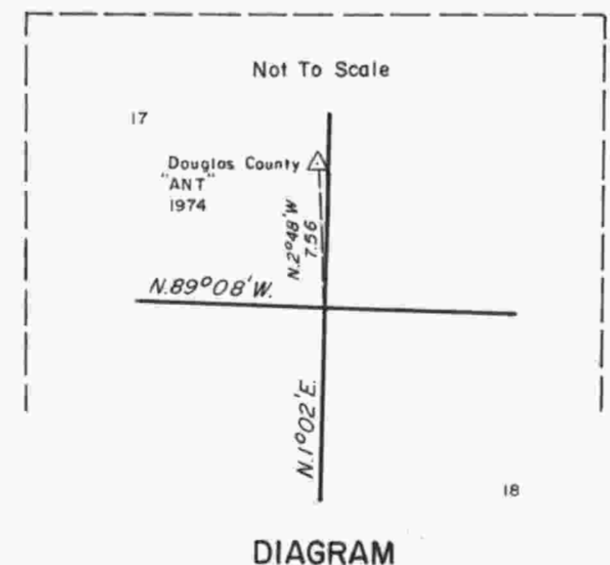
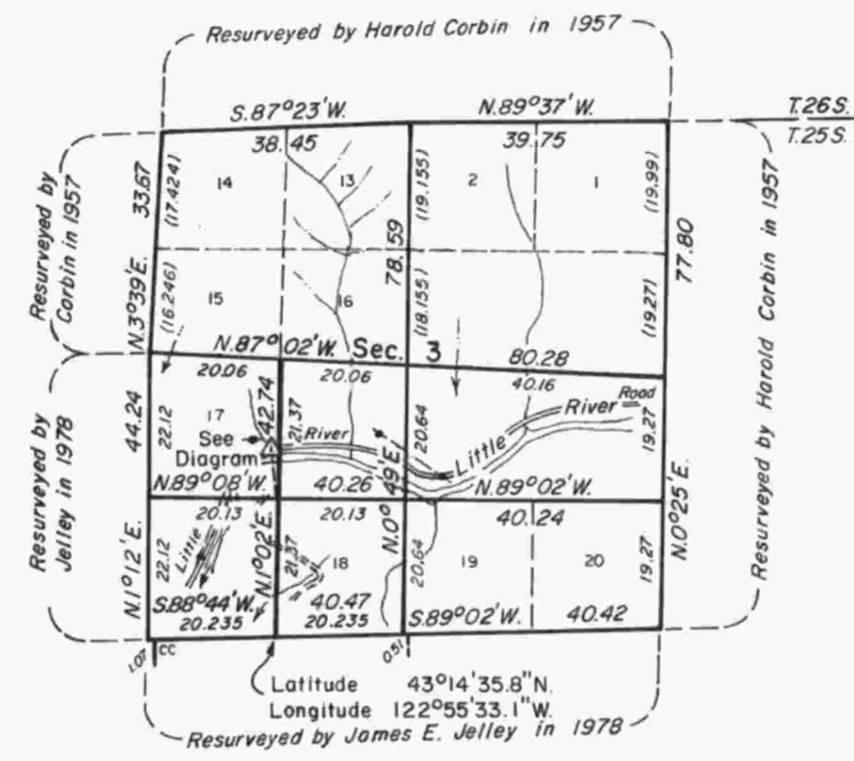
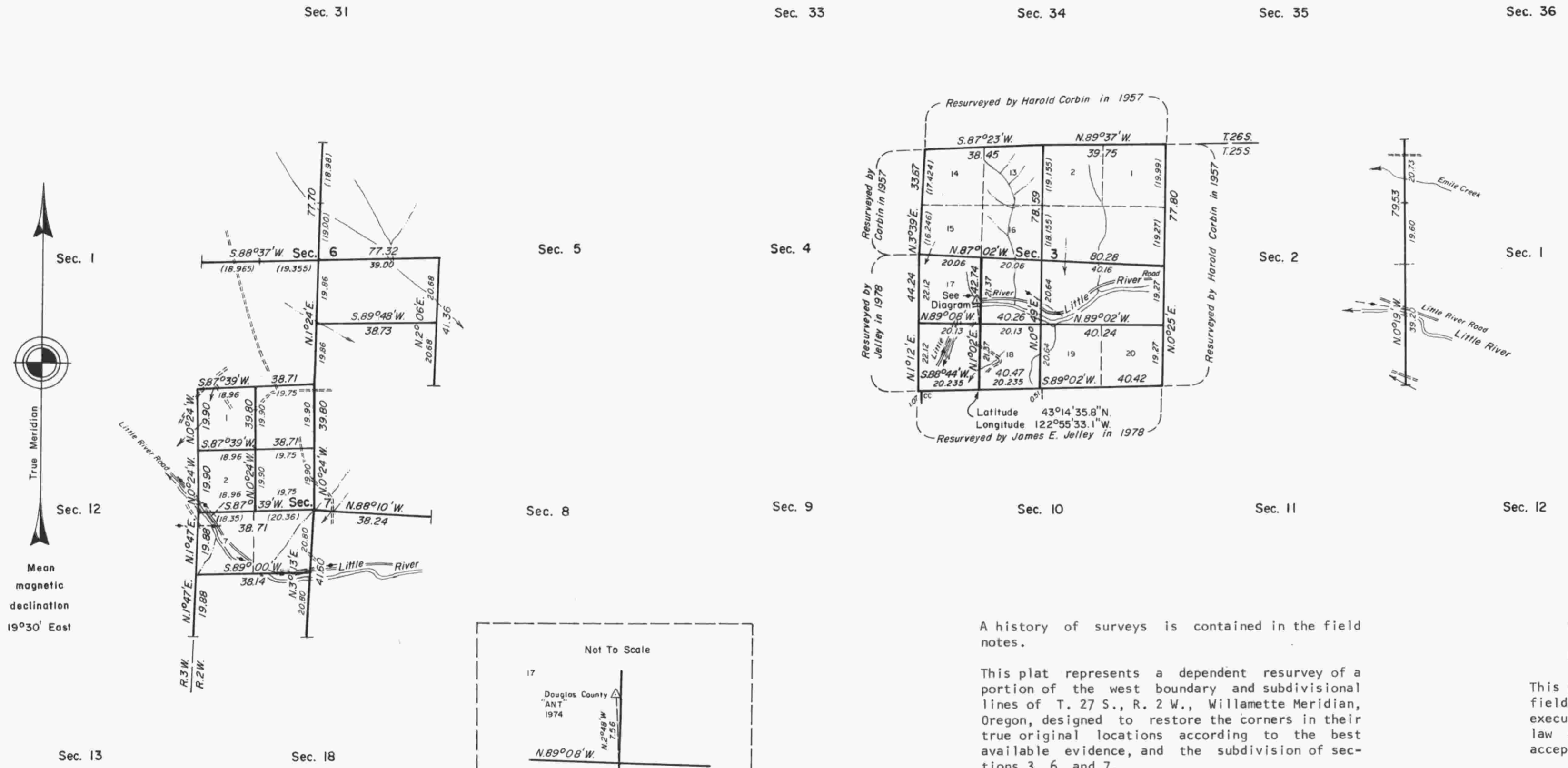


TOWNSHIP 27 SOUTH, RANGE 2 WEST, OF THE WILLAMETTE MERIDIAN, OREGON.

DEPENDENT RESURVEY AND SUBDIVISION OF SECTIONS 3, 6, AND 7



A history of surveys is contained in the field notes.

This plat represents a dependent resurvey of a portion of the west boundary and subdivisional lines of T. 27 S., R. 2 W., Willamette Meridian, Oregon, designed to restore the corners in their true original locations according to the best available evidence, and the subdivision of sections 3, 6, and 7.

The lottings and areas are as shown on the plats approved December 7, 1882 and March 6, 1906, and accepted May 7, 1959 and January 28, 1980.

The survey was executed by Wayne L. Rogers, Cadastral Surveyor, beginning May 16, 1979 and completed August 8, 1979, pursuant to Special Instructions dated May 10, 1979, for Group No. 983, Oregon.

Timber in this area consists of fir, hemlock, cedar, yew, pine, madrone, ash, maple, oak, and alder.

UNITED STATES DEPARTMENT OF THE INTERIOR
BUREAU OF LAND MANAGEMENT
Portland, Oregon June 16, 1983

This plat is strictly conformable to the approved field notes, and the survey, having been correctly executed in accordance with the requirements of law and the regulations of this Bureau, is hereby accepted.

For the Director

William W. Glenn

Chief Cadastral Surveyor of Oregon

