

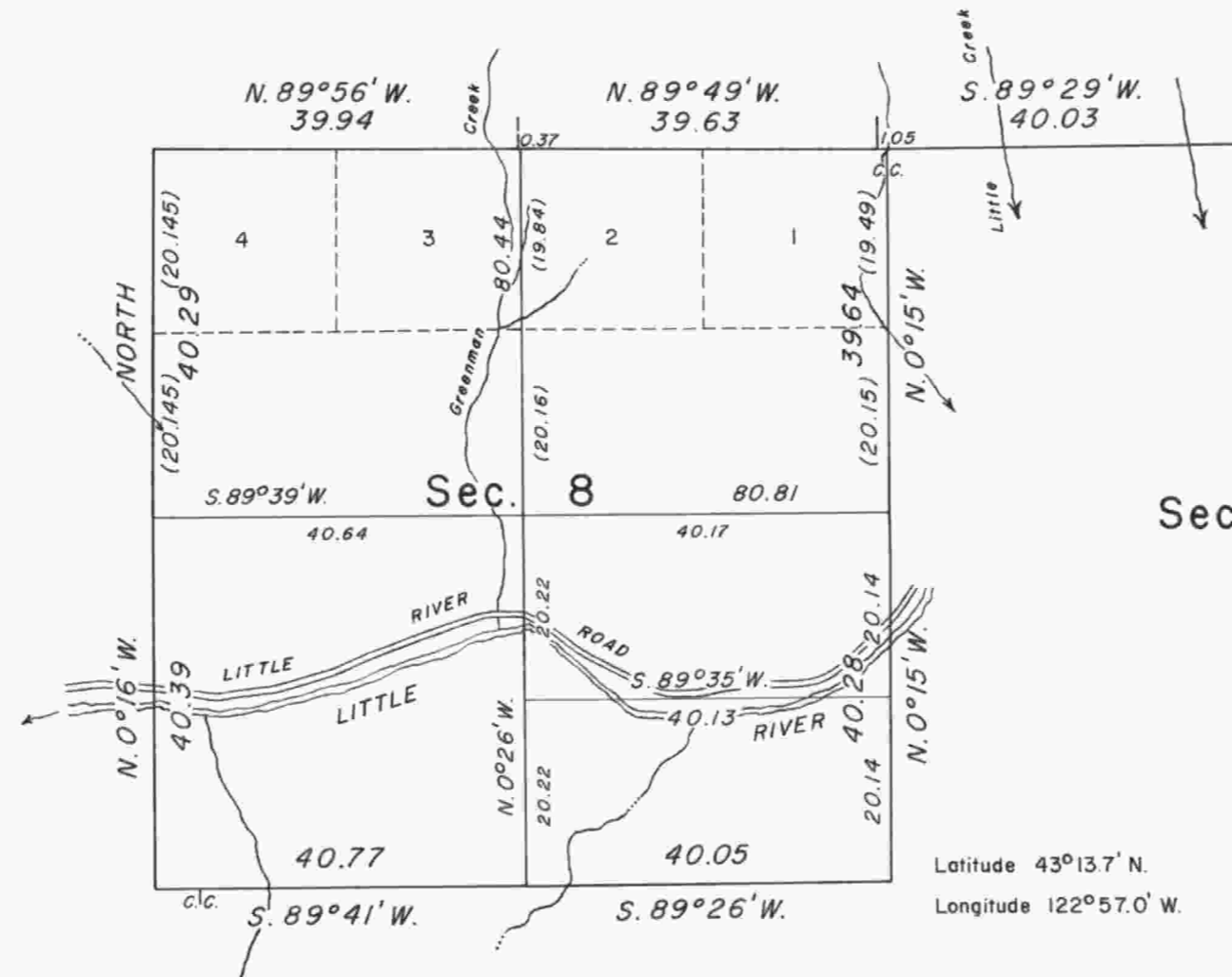
# TOWNSHIP 27 SOUTH, RANGE 2 WEST, OF THE WILLAMETTE MERIDIAN, OREGON.

DEPENDENT RESURVEY AND SUBDIVISION OF SECTION 8

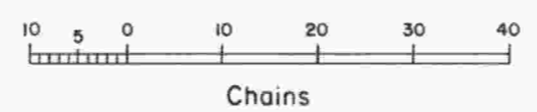
Sec. 6                      Sec. 5                      Sec. 4

Sec. 7                      Sec. 8                      Sec. 9

Sec. 18                      Sec. 17



Latitude 43° 13.7' N.  
Longitude 122° 57.0' W.



Area resurveyed: 637.44 acres

Timber in this area consists of fir, hemlock, cedar, madrone, maple, pine, and chinquapin.

This plat represents a dependent resurvey of a portion of the subdivisional lines, designed to restore the corners in their true original locations according to the best available evidence, and subdivision of section 8, T. 27 S., R. 2 W., Willamette Meridian, Oregon.

Except as indicated hereon, the lottings and areas are as shown on the plat approved March 6, 1906.

Sections 1 through 6 and the NW¼ of section 7 were surveyed by Samuel C. Flint in 1882. The subdivisional lines of sections 7 through 12 were surveyed by Charles E. Roberts, in 1905-07. The survey of the remaining subdivisional lines was made by Morris Wygant in 1911. The line between sections 3 and 34, on the north boundary of the township, and a portion of the subdivisional lines were resurveyed by Harold D. Corbin in 1957.

The resurvey and subdivision of section 8 were executed by Peter A. Peterson and Daniel L. Berry, Cadastral Surveyors, from August 27 to September 29, 1971, under Special Instructions dated August 13, 1971, which provide for the surveys included under Group No. 757, Oregon.

UNITED STATES DEPARTMENT OF THE INTERIOR  
BUREAU OF LAND MANAGEMENT  
Washington, D.C.                      March 8, 1973

This plat is strictly conformable to the approved field notes, and the survey, having been correctly executed in accordance with the requirements of law and the regulations of this Bureau, is hereby accepted.

For the Director

Chief, Division of Cadastral Survey