

TOWNSHIP 27 SOUTH, RANGE 2 WEST, OF THE WILLAMETTE MERIDIAN, OREGON. DEPENDENT RESURVEY

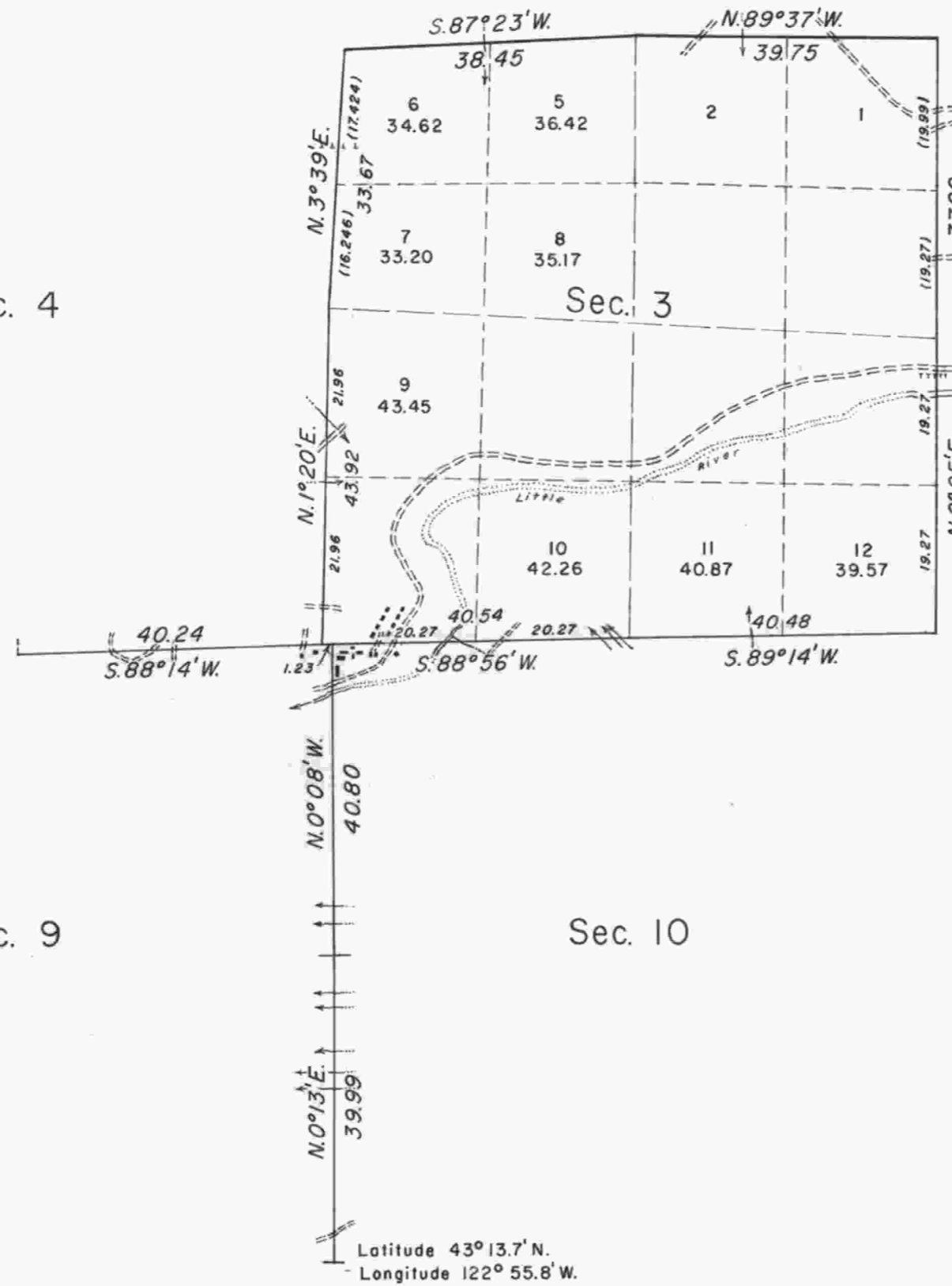
Sec. 33

Sec. 34

Sec. 35

Sec. 4

Sec. 2



True Meridian
 Mean
 Magnetic
 Declination
 20° 35' E.

This plat represents a retracement and re-establishment of portions of the north boundary and subdivisions of T. 27 S., R. 2 W., W. M., Oregon, designed to restore the corners in their true original location according to the best available evidence. Lottings and areas in sec. 3 are as shown on plat approved December 7, 1882, except as relottings are shown hereon.

The north boundary and sections 1 to 6, inclusive, was surveyed in 1892 by Samuel C. Flint.

Sections 13 to 36, inclusive, were surveyed in 1911 by Z. M. Derrick.

Sections 7 to 12, inclusive, were surveyed in 1905 and 1907 by Charles E. Roberts.

The north boundary of section 6 was retraced in 1909 by William C. Gibbs.

The north boundaries of sections 3 to 6, inclusive, were retraced in 1913 and 1914 by Charles M. Collier.

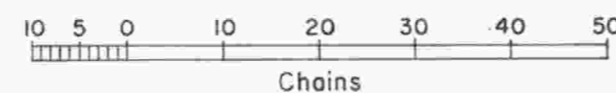
Dependent resurvey of portions of the north boundary and subdivisions of T. 27 S., R. 2 W., Willamette Meridian, Oregon executed by Harold D. Corbin, July 30, 1957 to August 21, 1957, under Special Instructions dated June 21, 1957, which provide for the surveys included under Group 351, Oregon.

UNITED STATES DEPARTMENT OF THE INTERIOR
 BUREAU OF LAND MANAGEMENT
 Washington, D.C. May 7, 1959

This plat is strictly conformable to the approved field notes, and the survey, having been correctly executed in accordance with the requirements of law and the regulations of this Bureau, is hereby accepted.

For the Director

Earl S. Harrington
 Cadastral Engineering Staff Officer



Area resurveyed: 629.27 acres

"SUSPENDED, FEB. 21, 1978, FILE 9622.1(420)"

JAN