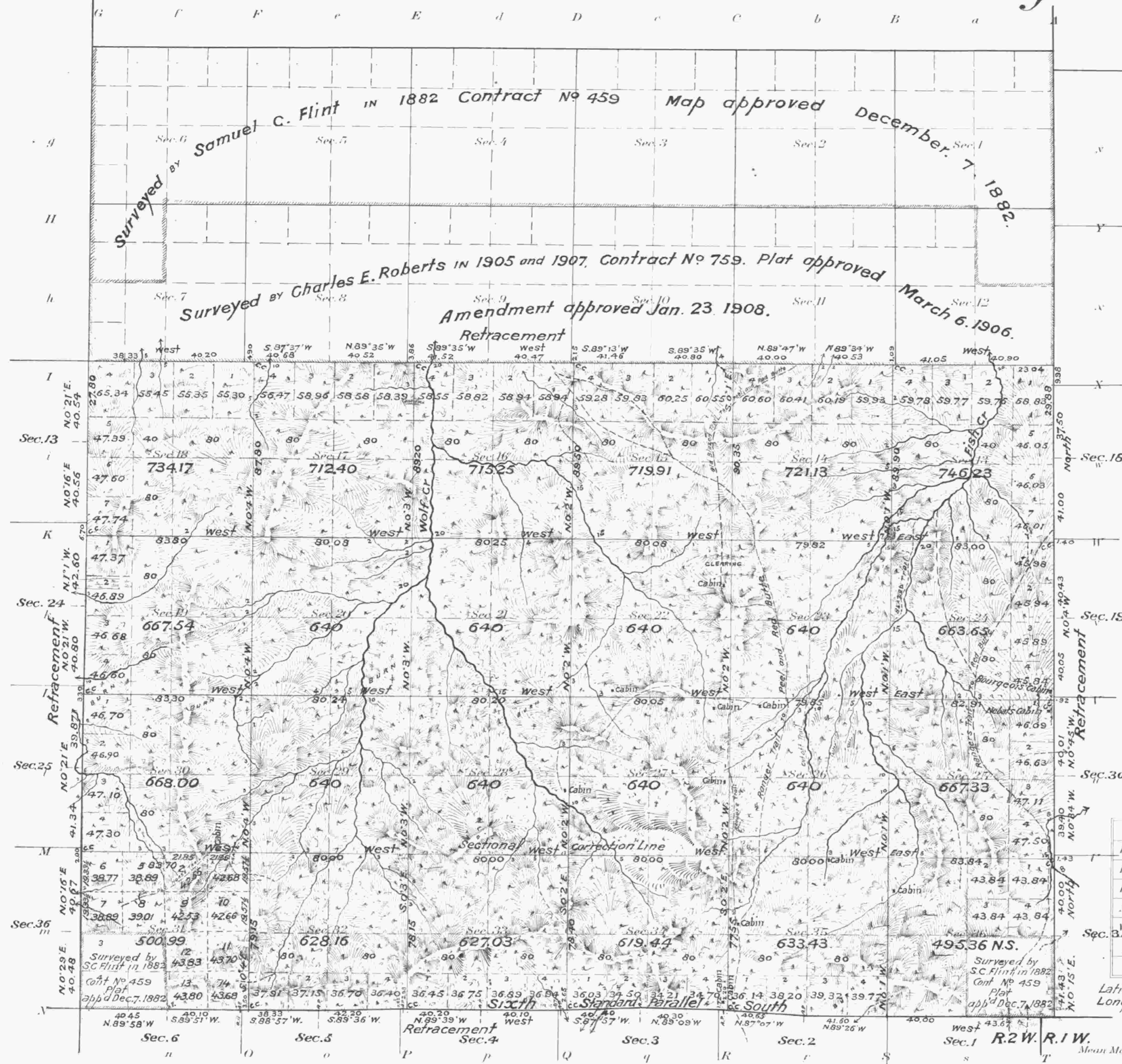


Township N^o 27 South Range N^o 2 West of the Willamette Meridian, Oregon.



Cost of surveys; - payable from Special Deposits made by Northern Pacific Railway Co - (See office letter dated April 26, 1913)

Areas in Acres	
Public Land	15640.02
Indian Reservation	
Indian Allotments	
Mineral Claims	
Water Surface	
Former Surveys	8039.20
Total Area	23679.22

Latitude 43° 10' N.
Longitude 122° 52' W.

Scale 40 Chains to an inch
Mean Magnetic Declination 21° 18' E.

Surveys Designated	By Whom Surveyed	Contract		Amount of Surveys			When Surveyed	
		No.	Date	Mts.	chs.	fts.	Began	Completed
Subdivisional Connections	Morris Wygant	779	Feb 7, 1908	38	81	12	September 29, 1911	October 31, 1911
Retracement of Subdivisions	Commissioner for Z.M. Derrick	"	"	6	06	46	" 19	September 24
Retracement, portion W. Bdy. T. 21S. R. 1W. and portion E. Bdy. T. 21S. R. 3W.	"	"	"	8	16	66	" 15	" 28
Sixth Standard Parallel	"	"	"	6	08	00	" 6	" 14
South Retracement Connections to old Corp. of Derrick survey.	"	"	"	2	20	97	" 1902	" 1902
Resurvey of E. Bdy of Secs. 12, 13, 24, 25, and 30	Homer D. Angell	746	May 5, 1902				1902	1902
Northern South Address of Tp. and E. Bdy of Sec. 1	Samuel C. Flint	459	Aug 3, 1882				1882	1882
West Bdy of Tp.	"	454	June 19, 1882				1882	1882

The above map of Township No 27 South Range No 2 West of the Willamette Meridian Oregon is strictly conformable to the field notes of the survey thereof on file in this office, which have been examined and approved

U.S. Surveyor General's Office.
Portland, Oregon. April 26, 1913.

Goovesigalt
Surveyor General for Oregon

ACCEPTED BY THE HON. COMMISSIONER G. L. O. July 19, 1913