

TOWNSHIP 26 SOUTH, RANGE 9 WEST, OF THE WILLAMETTE MERIDIAN, OREGON

DEPENDENT RESURVEY AND SUBDIVISION OF SECTION 31

Sec. 25

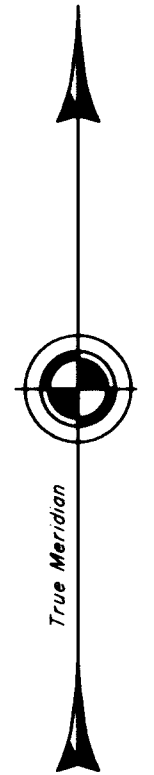
Sec. 30

Sec. 29

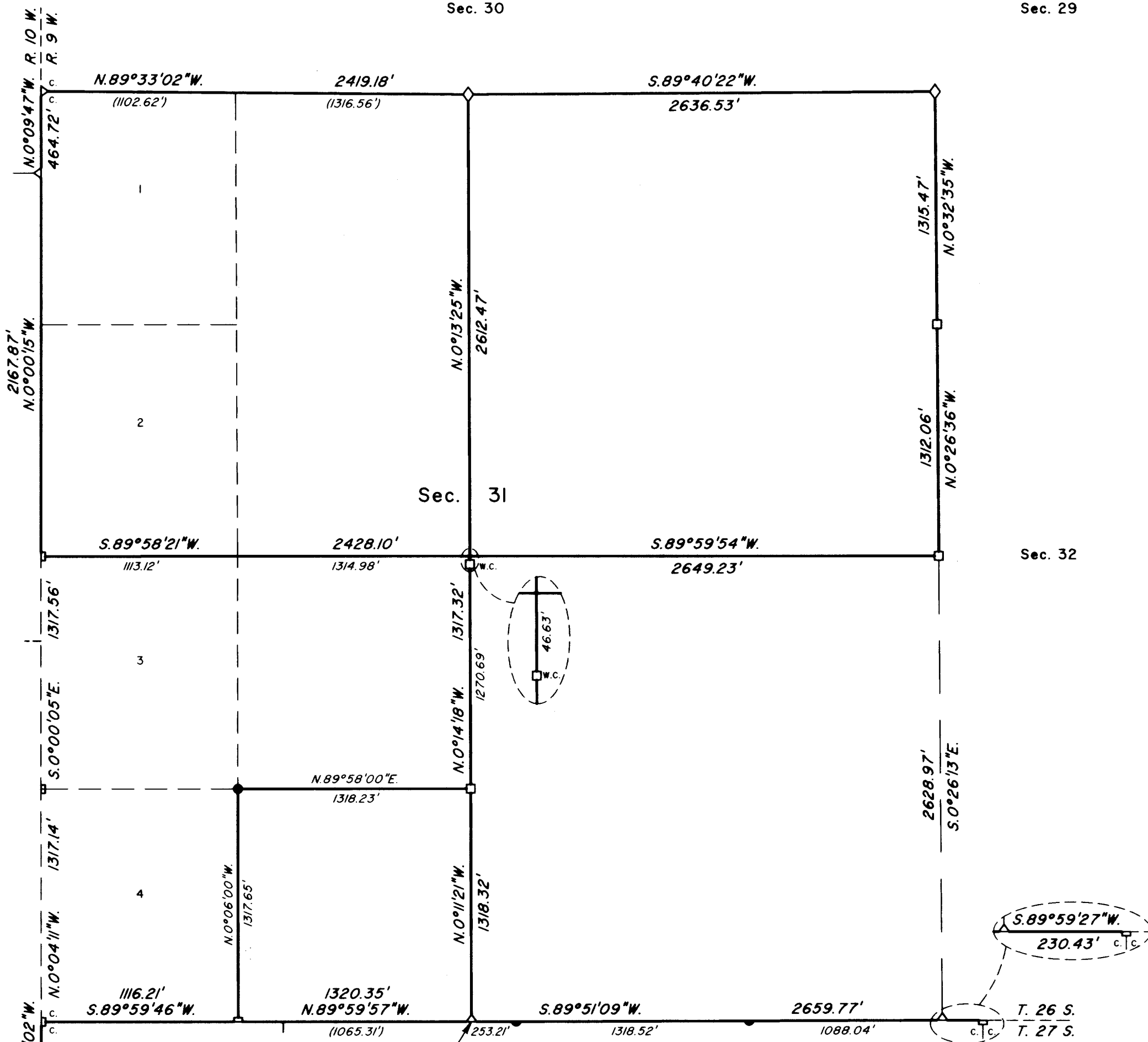
Sec. 36

Sec. 32

Sec. 31



Mean magnetic declination 18° East



Latitude 43°15'28.826"N.
Longitude 123°48'49.516"W.
(NAD 1983 (91))

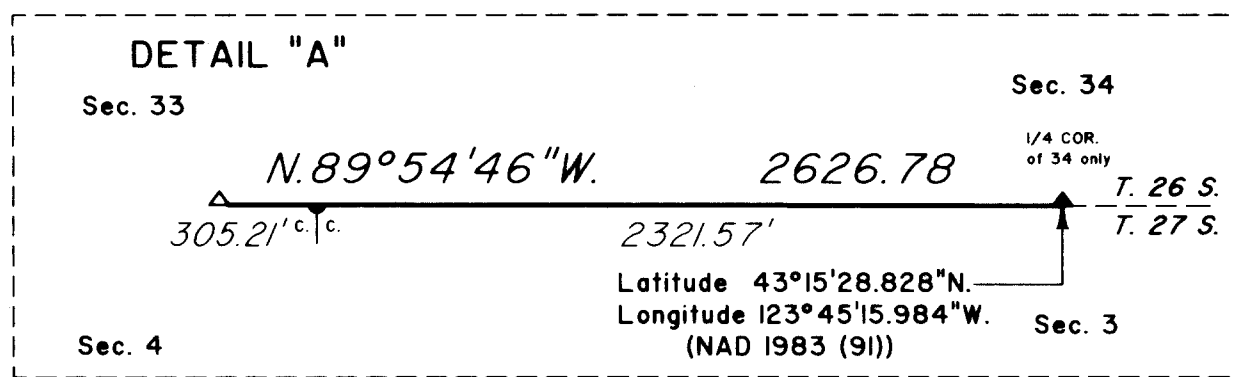
LOCATION DIAGRAM

31	32	33	34	35	36
6	5	4	3	2	1

T. 26 S.
T. 27 S.

Sec. 6

Sec. 5



Scale in Feet

A history of surveys is contained in the field notes.

This plat represents a dependent resurvey of a portion of the east boundary T. 26 S., R. 10 W., and the dependent resurvey of a portion of the south boundary and subdivisional lines, T. 26 S., R. 9 W., Willamette Meridian, Oregon, designed to restore the corners in their true original locations according to the best available evidence, and the subdivision of section 31.

Measured distances and directions have been adjusted by Cadastral Measurement Management for Windows (WinCMM), computer software that incorporates a least squares adjustment routine. The adjusted bearings and distances are reported to the nearest second and 0.01 foot.

The lottings and areas are as shown on the plat approved October 1, 1897.

The survey was executed by Edith M. Forkner, Cadastral Surveyor, beginning February 19, 2002, and completed February 4, 2003, pursuant to Special Instructions dated January 4, 2002, under Group Number 2005, Oregon.

Timber in this area consists of fir, hemlock, cedar, alder, myrtle, tan oak, maple, chinquapin, and madrone.

LEGEND

- ◊ Original corner previously remonumented
- ◻ Corner previously established or reestablished
- Corner established or reestablished this survey

UNITED STATES DEPARTMENT OF THE INTERIOR
BUREAU OF LAND MANAGEMENT

Portland, Oregon

August 6, 2004

This plat is strictly conformable to the approved field notes, and the survey, having been correctly executed in accordance with the requirements of law and the regulations of this Bureau, is hereby accepted.

For the Director

Chief Cadastral Surveyor of Oregon

Not in Douglas Co. but does tie to 2 corners in Douglas Co.