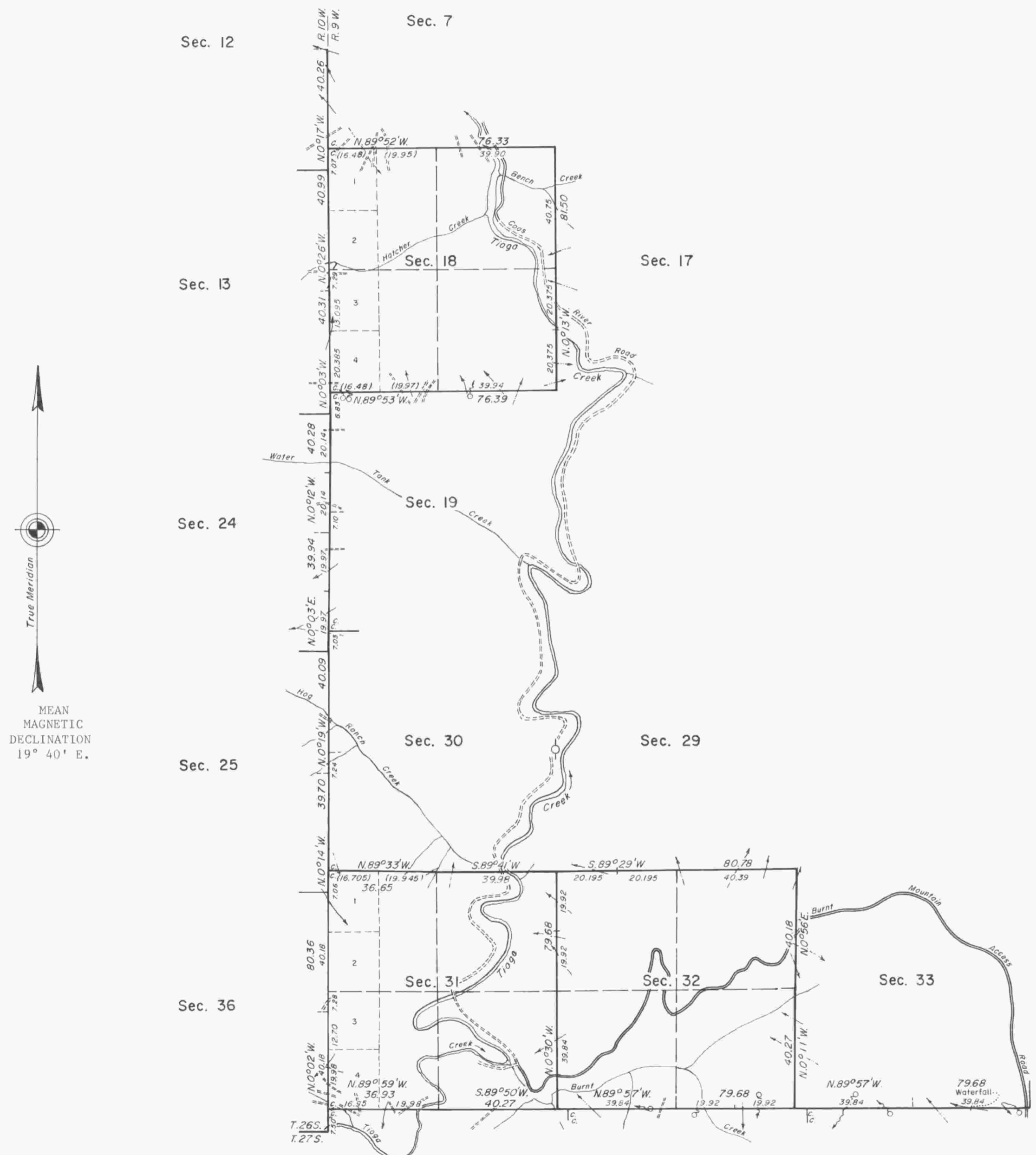


TOWNSHIP 26 SOUTH, RANGE 9 WEST, OF THE WILLAMETTE MERIDIAN, OREGON.

DEPENDENT RESURVEY AND REMONUMENTATION



This plat represents a dependent resurvey of a portion of the east boundary, T. 26 S., R. 10 W., and a portion of the south boundary and subdivisional lines and remonumentation of an original corner point, T. 26 S., R. 9 W., Willamette Meridian, Oregon, designed to restore the corners in their true original locations according to the best available evidence.

The lottings and areas are as shown on the plat approved October 1, 1897.

The east boundary of T. 26 S. R. 10 W., was surveyed by Samuel W. Lackland, in 1896-97.

The south boundary and subdivisional lines of T. 26 S., R. 9 W., were surveyed by John W. Meldrum, in 1896-97.

A portion of the subdivisional lines of T. 27 S., R. 9 W., was surveyed by Samuel W. Lackland, in 1897, at which time he established closing corners against the south boundary of T. 26 S., R. 9 W.

An amended survey of a portion of Lackland's survey in the northwest portion of T. 27 S., R. 9 W., including the boundaries of section 6 and the line between sections 4 and 5, was made by Robert C. Bosner, in 1901.

The 1/4 section corner of sections 19 and 30 was remonumented without survey by Joseph S. Gawron, in 1960.

Certain original corner points on the west boundary and subdivisional lines of T. 26 S., R. 9 W., were remonumented without survey by Wayne L. Rogers, in 1973.

Survey executed by Owen C. Chatters II and Jack W. Bowder, Cadastral Surveyors, beginning September 8, 1972, and completed August 5, 1977, pursuant to Special Instructions dated May 3, 1957, and July 28, 1972, and Supplemental Special Instructions dated March 18, 1975, for Group Nos. 350 and 791, Oregon.

UNITED STATES DEPARTMENT OF THE INTERIOR
BUREAU OF LAND MANAGEMENT
Denver, Colorado June 19, 1980

This plat is strictly conformable to the approved field notes, and the survey, having been correctly executed in accordance with the requirements of law and the regulations of this Bureau, is hereby accepted.

For the Director

Mary S. Speight

Acting Chief, Cadastral Survey
Examination and Approval Staff

Latitude $43^{\circ} 15' 5'' N.$
Longitude $123^{\circ} 45' 8'' W.$

Timber in this area consists of fir, hemlock, cedar, maple, alder, chinquapin and madrone.