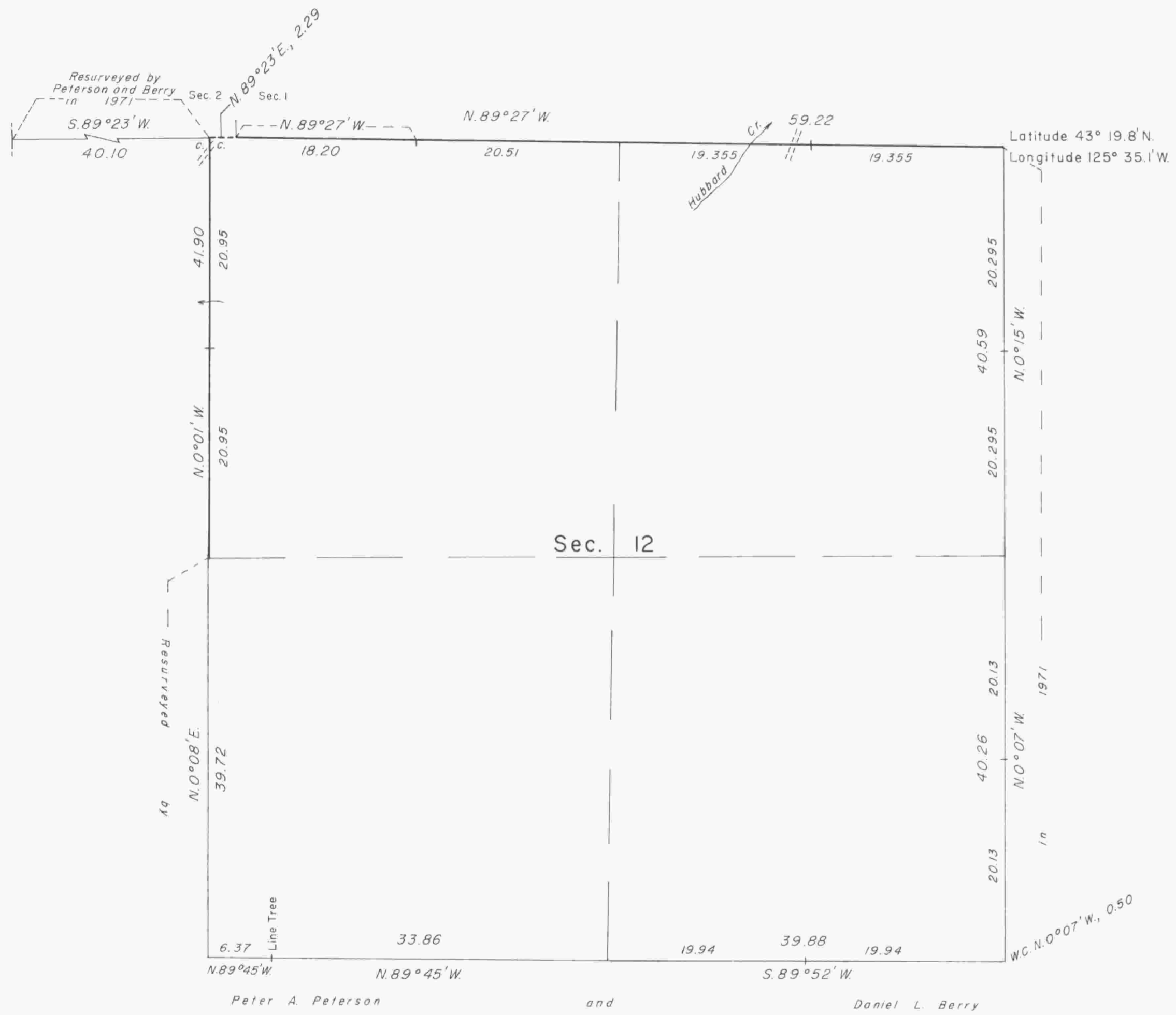
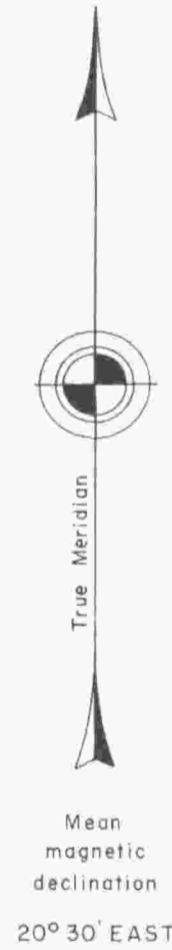


TOWNSHIP 26 SOUTH, RANGE 8 WEST, OF THE WILLAMETTE MERIDIAN, OREGON

CORRECTIVE DEPENDENT RESURVEY



A history of surveys is contained in the field notes.

This plat represents a corrective dependent resurvey of a portion of the subdivisional lines, as resurveyed in 1971, T. 26 S., R. 8 W., Willamette Meridian, Oregon, designed to restore the corners in their true original locations according to the best available evidence.

The lottings and areas are as shown on the plats approved September 10, 1897, and accepted May 11, 1977.

The survey was executed by James E. Jelley and Wayne L. Rogers, Cadastral Surveyors, beginning January 3, 1983, and completed January 5, 1983, pursuant to Special Instructions dated November 15, 1982, for Group No. 1128, Oregon.

Timber in this area consists of fir, hemlock, cedar, yew, madrone, maple, chinquapin, oak, and alder.

UNITED STATES DEPARTMENT OF THE INTERIOR
BUREAU OF LAND MANAGEMENT
Portland, Oregon March 17, 1983

This plat is strictly conformable to the approved field notes, and the survey, having been correctly executed in accordance with the requirements of law and the regulations of this Bureau, is hereby accepted.

For the Director

William W. Glenn

Chief Cadastral Surveyor of Oregon