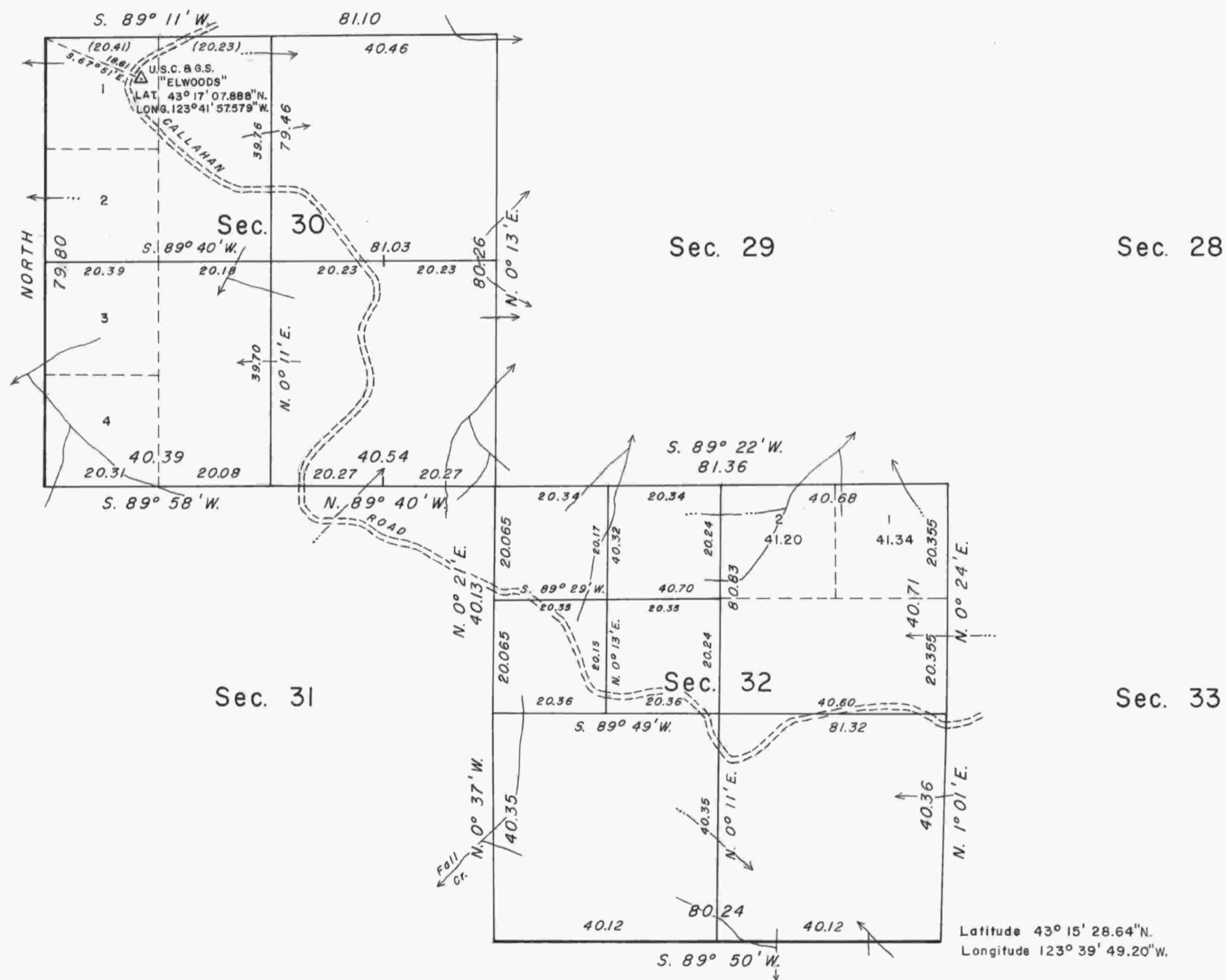


# TOWNSHIP 26 SOUTH, RANGE 8 WEST, OF THE WILLAMETTE MERIDIAN, OREGON.

## DEPENDENT RESURVEY AND SUBDIVISION

Sec. 19

Sec. 20



NORTH  
 True Meridian  
 Mean  
 Magnetic  
 Declination  
 19°24' East

This plat represents a retracement and reestablishment of a portion of the south and west boundaries and a portion of the subdivisional lines of T.26 S., R.8 W., Willamette Meridian, Oregon, designed to restore the corners in their true original locations according to the best available evidence, and, subdivision of sections 30 and 32.

Excepting as new or modified vacant subdivisions are shown hereon, the lottings and areas are as shown on the plat approved September 10, 1897.

In 1881, Addison R. and Samuel C. Flint surveyed the boundaries of the township.

In 1896, John W. Meldrum resurveyed the west boundary and William P. Heydon subdivided the township.

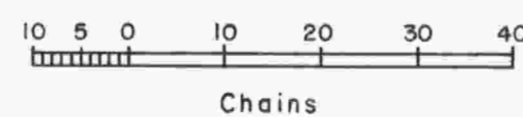
The resurvey and subdivision of sections 30 and 32 were executed by Peter A. Peterson, Cadastral Surveyor, beginning May 19, 1967, and completed July 28, 1967, under Special Instructions dated April 26, 1967, which provide for the surveys included under Group No. 638, Oregon.

UNITED STATES DEPARTMENT OF THE INTERIOR  
 BUREAU OF LAND MANAGEMENT  
 Washington, D. C.      January 19, 1970

This plat is strictly conformable to the approved field notes, and the survey, having been correctly executed in accordance with the requirements of law and the regulations of this Bureau, is hereby accepted.

For the Director

Acting Chief, Division of Cadastral Survey



Area resurveyed: 1,284.18 Acres

Timber in this area consists of fir, hemlock, cedar, yew, maple, alder, chinquapin, dogwood, madrone, and myrtle.