

# TOWNSHIP 26 SOUTH, RANGE 7 WEST, OF THE WILLAMETTE MERIDIAN, OREGON

## DEPENDENT RESURVEY AND SUBDIVISION OF SECTIONS

FILED  
 Date: 9/12/2011 By: JC  
 This survey consists of:  
 Map: VOL 57  
 Narrative: PAGES  
 Corner Rpt: 22465-22484

DOUGLAS COUNTY  
 SURVEYOR

A history of surveys is contained in the field notes.

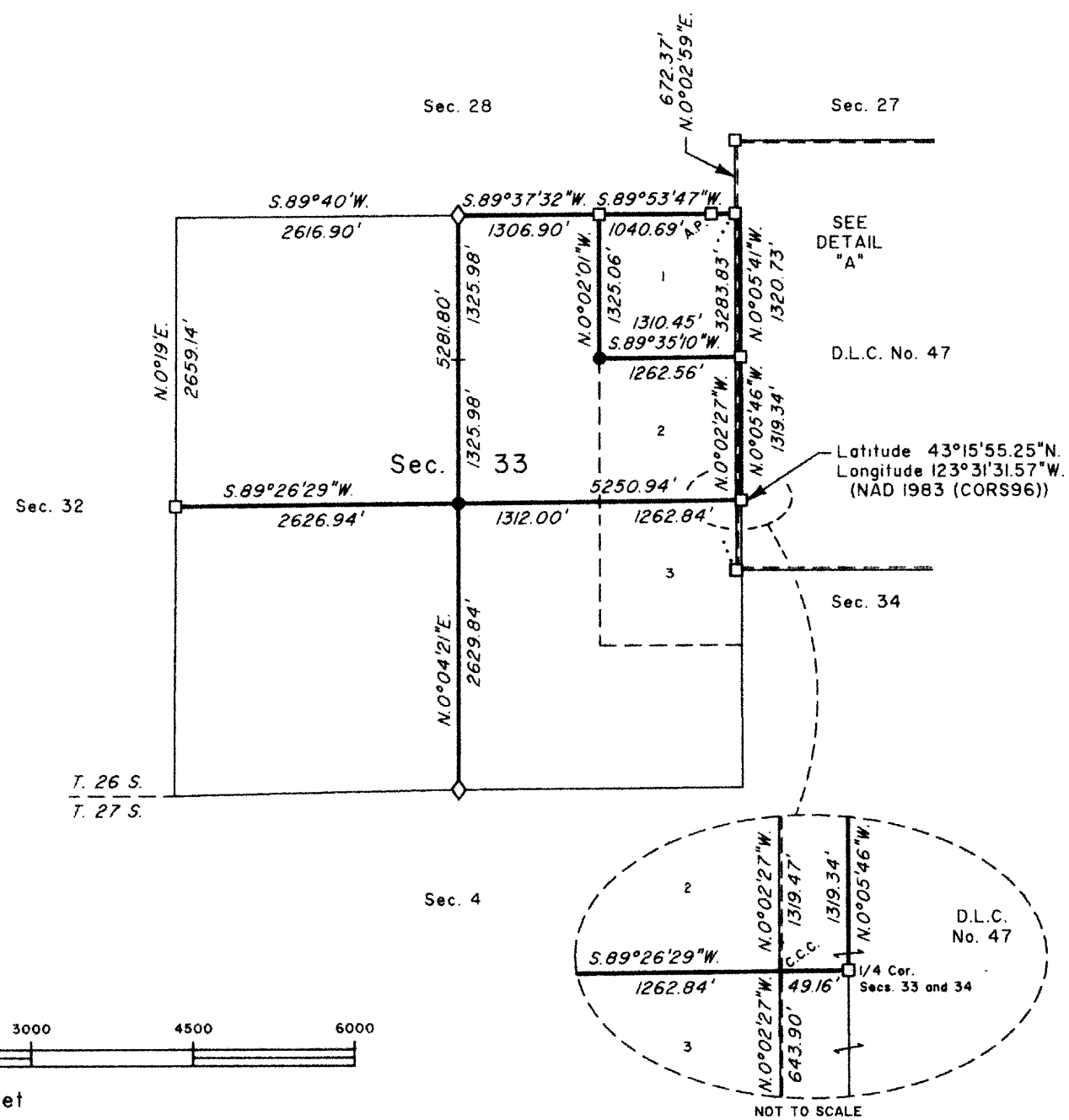
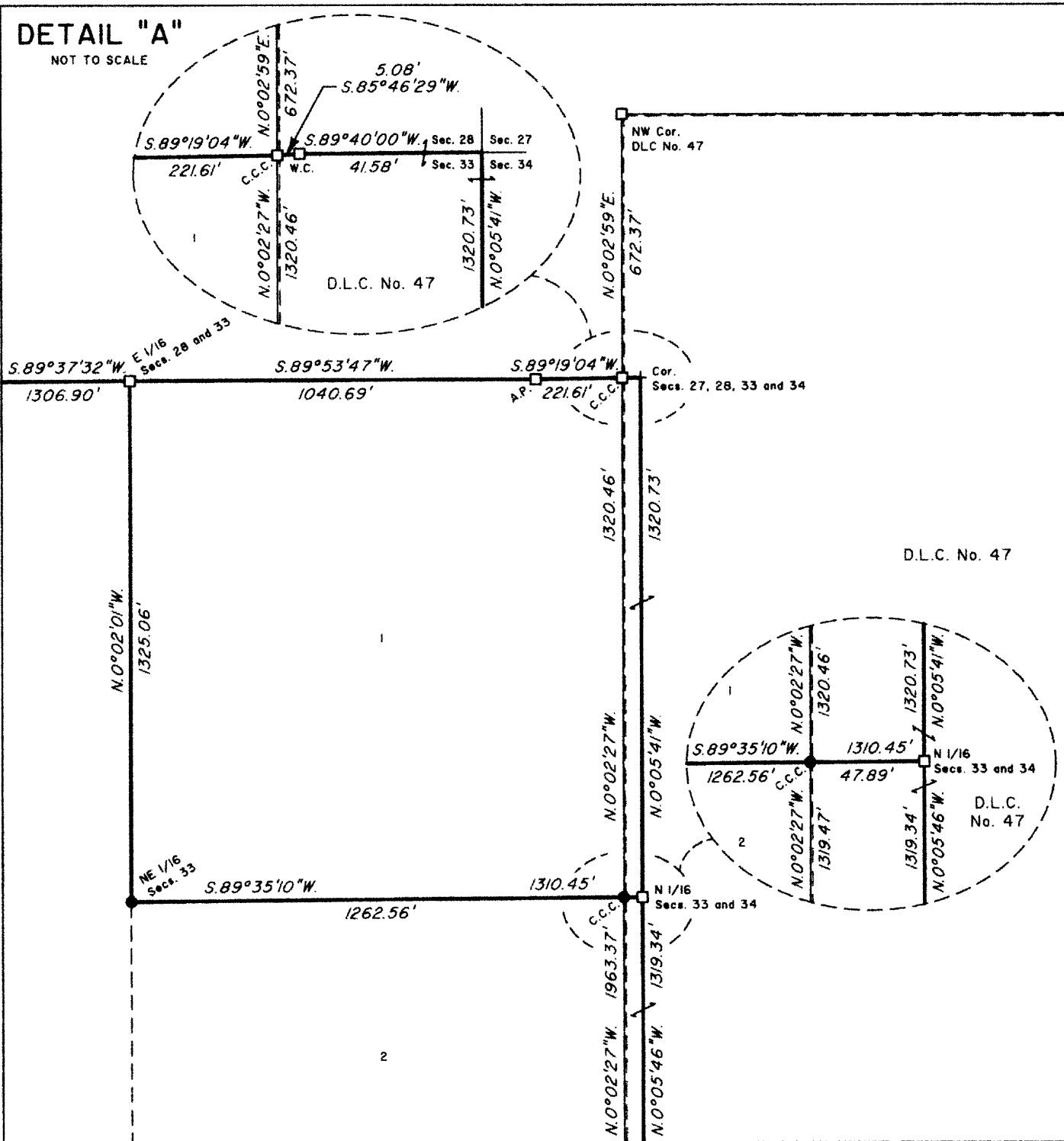
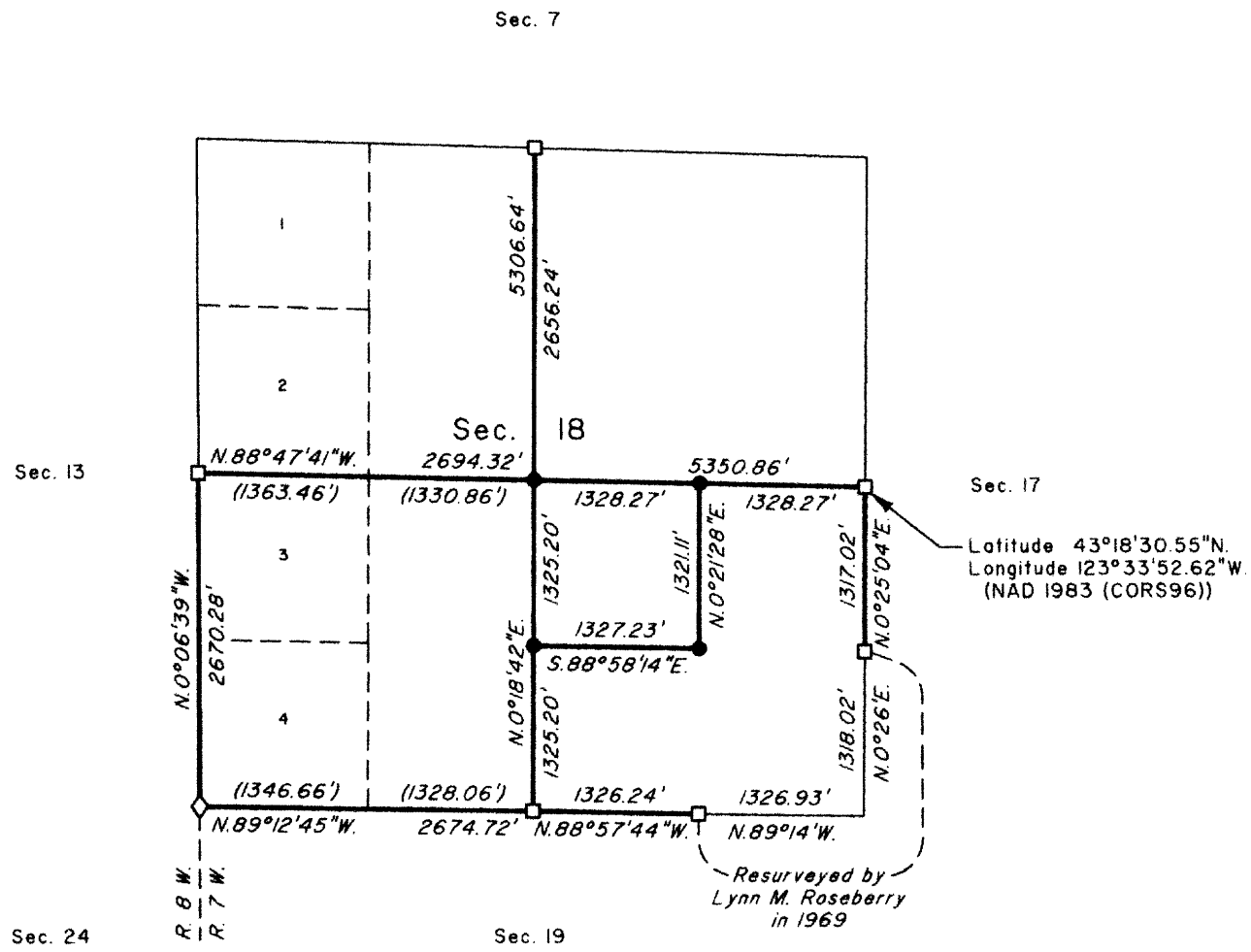
This plat represents a dependent resurvey of a portion of the west boundary and subdivisional lines, and the west boundary of D.L.C. No. 47, T. 26 S., R. 7 W., Willamette Meridian, Oregon, designed to restore the corners in their true original locations according to the best available evidence, and the subdivision of sections 18 and 33.

Measured distances and directions have been adjusted by computer software that incorporates a least squares adjustment routine. The adjusted bearings and distances are reported to the nearest second and 0.01 foot.

Actual quantity acreages have been returned for Federal interest lands where indicated. Changes in the official acreage of land described by aliquot part or lot number do not alter its description. Further subdivision of aliquot parts shall be in accordance with the Manual. Further subdivision of official lots may only be by supplemental plat or official survey. Official acreage and lot designations of Federal interest land not affected by this survey are as shown on the plats approved October 22, 1860, and January 14, 1882.

The survey was executed by Timothy J. Moore, Cadastral Surveyor, and Robert H. Browning, Surveying Technician, beginning June 6, 2006, and completed August 23, 2006, pursuant to Special Instructions dated April 7, 2006, under Group Number 2140, Oregon.

The lightweight exterior section lines with bearing and distance of section 33 were surveyed by Peter A. Peterson, Daniel L. Berry, Gordon S. Popken and Harvey E. Wofford in 1971-74.



LEGAL SUBDIVISION	OFFICIAL ACRES
SECTION 18	
NE 1/4 SE 1/4	40.20
SW 1/4 SE 1/4	40.36
SE 1/4 SE 1/4	40.28
SECTION 33	
LOT 1	38.34
NE 1/4 NW 1/4	39.92
NW 1/4 NW 1/4	39.99
SW 1/4 NW 1/4	40.01
SE 1/4 NW 1/4	39.97

**LEGEND**

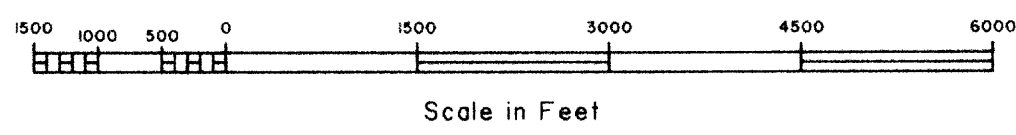
- ◊ Original corner previously remonumented
- Corner previously established or reestablished
- Corner previously established or reestablished; remonumented this survey
- Corner established or reestablished this survey
- + Corner point calculated, no monument set

UNITED STATES DEPARTMENT OF THE INTERIOR  
 BUREAU OF LAND MANAGEMENT  
 Portland, Oregon

This plat is strictly conformable to the approved field notes, and the survey, having been correctly executed in accordance with the requirements of law and the regulations of this Bureau, is hereby accepted.

For the Director  
*Mary J. M. Hartz*  
 Chief Cadastral Surveyor of Oregon

*June 15, 2011*  
 Date



OFFICIALLY FILED: 8/12/2011