

TOWNSHIP 26 SOUTH, RANGE 7 WEST, OF THE WILLAMETTE MERIDIAN, OREGON

DOUGLAS COUNTY
SURVEYOR

RETRACEMENT AND REHABILITATION

This plat represents the entire record of the retracement of a portion of the subdivisional lines, and rehabilitation of the corner of sections 20, 21, 28, and 29, T. 26 S., R. 7 W., Willamette Meridian, Oregon.

A history of surveys pertaining to this retracement and rehabilitation is as follows:

In 1881, Addison R. and Samuel C. Flint, U.S. Deputy Surveyors retraced the west boundary and portions of the north and south boundary and completed the subdivisional lines.

In 1959, Irving Zirpel Jr. and Leo J. Martin, Cadastral Surveyors, dependently resurveyed a portion of the west boundary and subdivisional lines, and remonumented the corner of sections 15, 16, 21, and 22.

In 1971-74, Peter A. Peterson, Daniel L. Berry, Gurdon S. Popken, and Harvey E. Wofford, Cadastral Surveyors, dependently resurveyed a portion of the south and north boundaries, a portion of the subdivisional lines and claim lines.

In 2001-02, Timothy J. Moore, Cadastral Surveyor, and Robert H. Browning, Surveying Technician, dependently resurveyed a portion of the south boundary and subdivisional lines, and subdivided sections 21 and 32.

The directions of the lines are based on the true meridian as determined by direct solar observation.

The retracement data were thoroughly verified and only the trueline data are given hereon. Only those lines bounding or crossing public land were blazed.

An analysis of the unadjusted field data assured a closure not exceeding 1:4000 in error. Measured distances and directions have been adjusted by computer software that incorporates a least squares adjustment routine. The adjusted bearings and distances are reported to the nearest second and 0.01 foot.

The geodetic position shown hereon was determined by a tie to Geodetic Control Station EC 41309.

Each new bearing tree has a 2 1/2 inch x 1/4 inch magnetic nail (Mag Nail) driven at the base on right side center, unless otherwise noted in the corner description.

This survey was executed by A. Bert Skeesick, Cadastral Surveyor, and Robert H. Browning, Surveying Technician, beginning March 17, 2009 and completed March 23, 2009, in accordance with the specification set forth in the Manual of Surveying Instructions, 1973; pursuant to Special Instructions dated March 16, 2007, approved March 21, 2007, which provided for the survey included under Group Number 2300, Oregon, Administrative File Number 0902, and Assignment Instructions dated April 16, 2009. They were assisted by Robert NMI Durning, and Joel R. Herzberg, Surveying Technicians.

UNITED STATES DEPARTMENT OF THE INTERIOR
BUREAU OF LAND MANAGEMENT

Portland, Oregon

The retracement and rehabilitation represented by this plat, having been correctly executed in accordance with the requirements of law and the regulations of this Bureau, is hereby accepted.

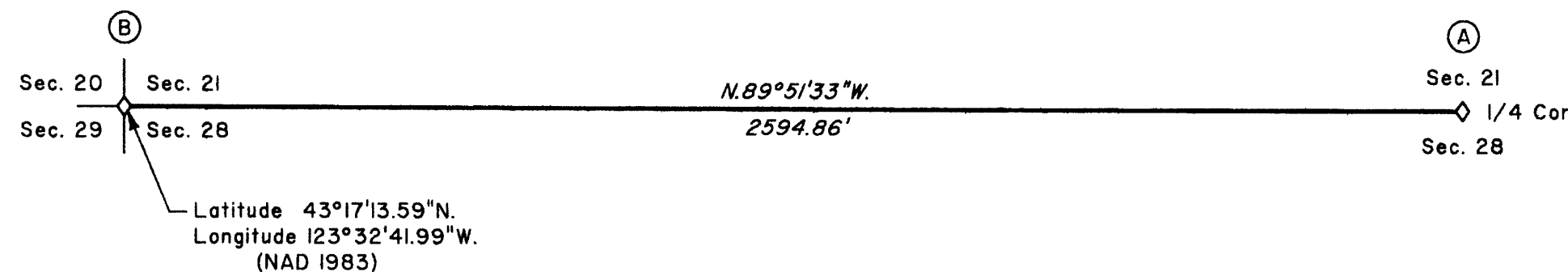
For the Director

Mary J. M. Hart

Chief Cadastral Surveyor of Oregon

March 18, 2011

Date



(A) The 1/4 sec. cor. of secs. 21 and 28, monumented with an iron post, 2 1/2 ins. diam., firmly set, projecting 8 ins. above the ground, with brass cap mkd.

T 26 S R 7 W
S 21
1/4
S 28
1959

from which reference monuments set by Zirpel and Martin, reported by Moore and Browning

An iron post, 2 1/2 ins. diam., firmly set, projecting 4 ins. above the ground for a reference monument, bears S. 3° 21' 18" E., 7.4 ft. dist. with brass cap mkd. T26S R7W 1/4 S28 RM 1959 and an arrow pointing to the corner.

An iron post, 2 1/2 ins. diam., firmly set, projecting 9 ins. above the ground for a reference monument, bears N. 1° 25' 18" W., 7.4 ft. dist. with brass cap mkd. T26S R7W 1/4 S21 RM 1959 and an arrow pointing to the corner.

(B) The cor. of secs. 20, 21, 28, and 29, monumented with an iron post, 2 1/2 ins. diam., firmly set, projecting 4 ins. above a mound of stone, 3 1/2 ft. base, 1 1/2 ft. high, with brass cap mkd.

T 26 S R 7 W
S 20 S 21
S 29 S 28
1959

from which a bearing object mkd. by Zirpel and Martin, reported by Moore and Browning

A bedrock outcropping, bears S. 70° E., 7.6 ft. dist., chiseled X BO.

and a bearing tree mkd. by Peterson, Berry, Popken, and Wofford, reported by Moore and Browning

A madrone, 13 ins. diam., bears S. 39° W., 7.3 ft. dist., with no marks visible.

and a bearing tree mkd. by Moore and Browning in 2001

A fir, 21 ins. diam., bears N. 47 1/2° W., 75.3 ft. dist., with a healed blaze.

and a new bearing tree

A madrone, 6 ins. diam., bears N. 55 1/4° E., 12.3 ft. dist., mkd. T26S R7W S21 BT.



We, A. Bert Skeesick, Cadastral Surveyor, and Robert H. Browning, Surveying Technician, HEREBY CERTIFY upon honor that in pursuance of Special Instructions bearing date of the 16th day of March, 2007, we have retraced a portion of the subdivisional lines and rehabilitated the corner of sections 20, 21, 28, and 29, Township 26 South, Range 7 West, Willamette Meridian, Oregon, which is represented upon this plat as having been executed by us and under our direction. Said retracement and rehabilitation have been executed in strict conformity with said Special Instructions, the Manual of Instructions for the Survey of the Public Lands of the United States, 1973, and in specific manner described on this plat.

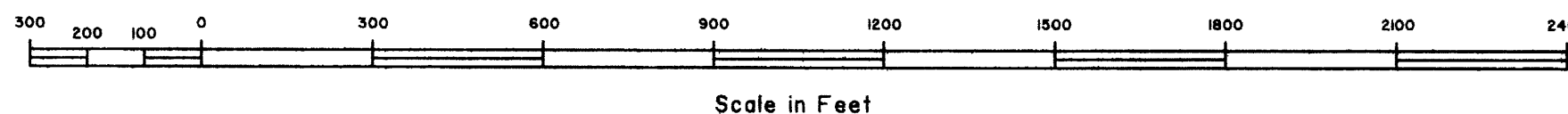
[Signature]
Cadastral Surveyor

03/14/2011
Date

[Signature]
Surveying Technician

03/14/2011
Date

LEGEND
◊ Original corner previously remonumented



Scale in Feet

OFFICIALLY FILED: 5/4/2011