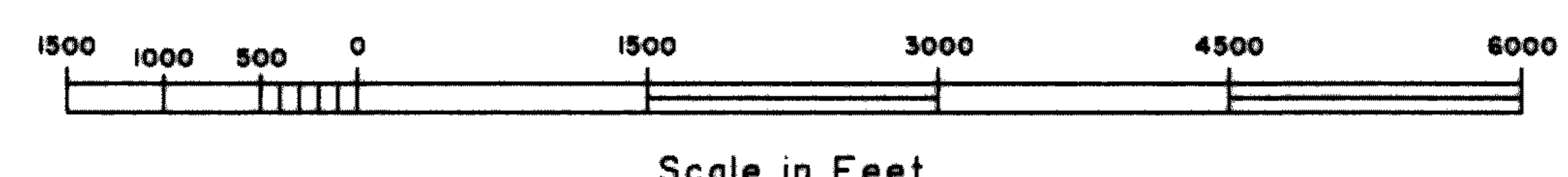
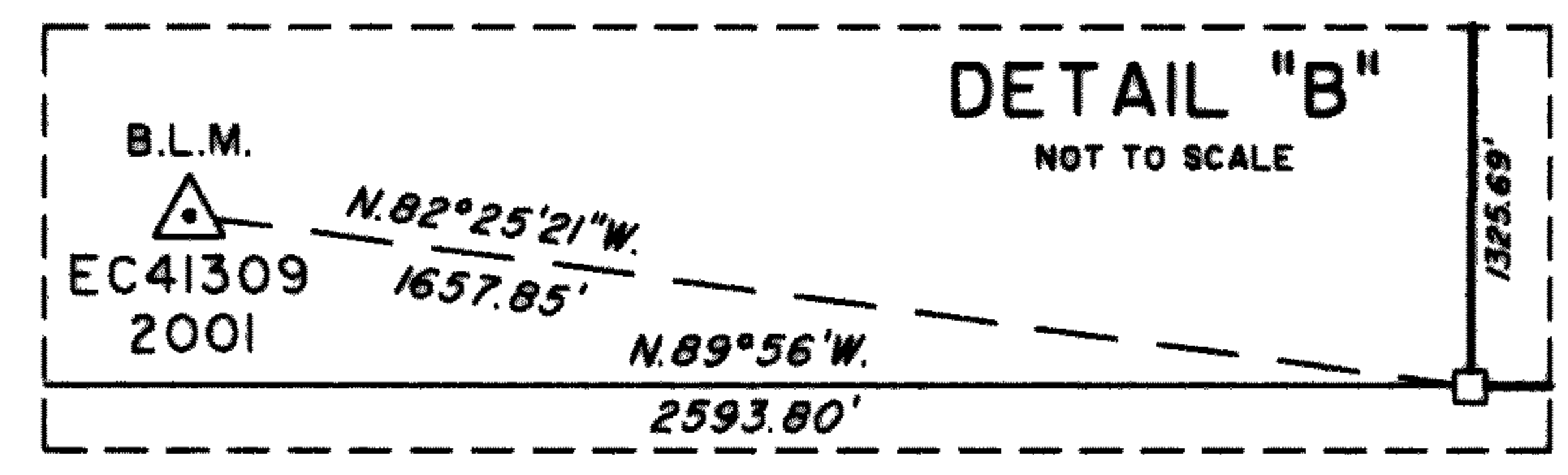
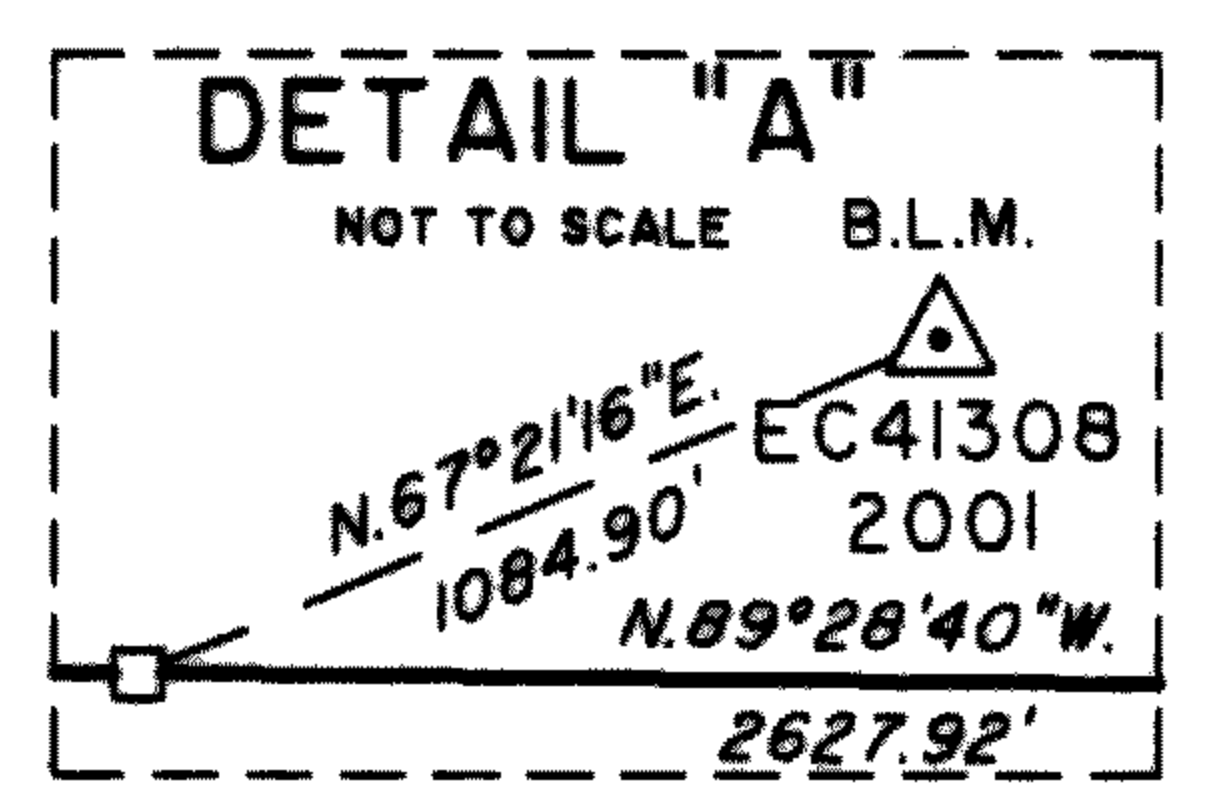
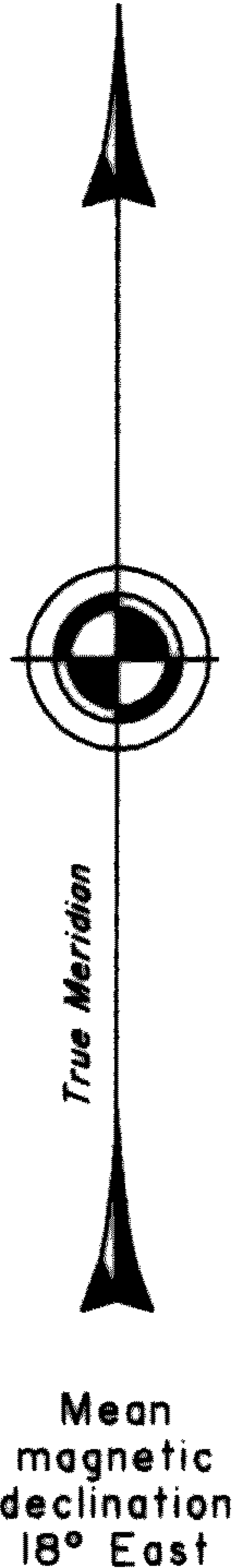
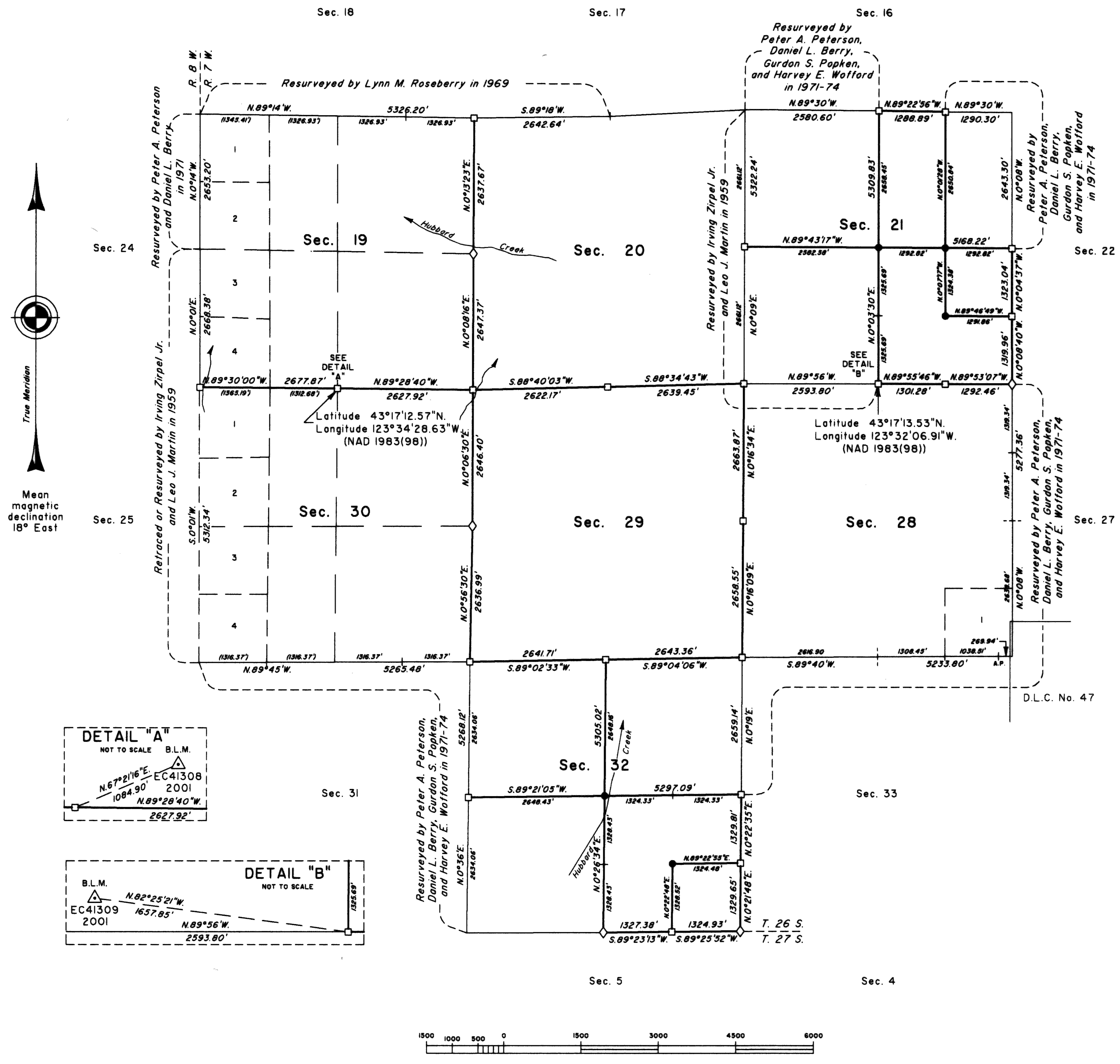


TOWNSHIP 26 SOUTH, RANGE 7 WEST, OF THE WILLAMETTE MERIDIAN, OREGON

DEPENDENT RESURVEY AND SUBDIVISION OF SECTIONS 21 AND 32



A history of surveys is contained in the field notes.

This plat represents a dependent resurvey of a portion of the south boundary and subdivisional lines, T. 26 S., R. 7 W., Willamette Meridian, Oregon, designed to restore the corners in their true original locations according to the best available evidence, and the subdivision of sections 21 and 32.

Measured distances and directions have been adjusted by Cadastral Measurement Management for Windows (WinCMM), computer software that incorporates a least squares adjustment routine. The adjusted bearings and distances are reported to the nearest second and 0.01 foot.

The lottings and areas are as shown on the plats approved October 22, 1860 and January 14, 1882 and the plat accepted May 12, 1977.

The survey was executed by Timothy J. Moore, Cadastral Surveyor, and Robert H. Browning, Surveying Technician, beginning July 9, 2001, and completed September 12, 2002, pursuant to Special Instructions dated May 31, 2001, under Group Number 1990, Oregon.

Timber in this area consists of fir, cedar, hemlock, oak, alder, madrone, maple, and chinquapin.

The ties to the geodetic control stations are reported as mean bearing and sea level distance.

LEGEND

- ◊ Original corner previously remonumented
- Corner previously established or reestablished
- Corner established or reestablished this survey

UNITED STATES DEPARTMENT OF THE INTERIOR
BUREAU OF LAND MANAGEMENT

Portland, Oregon September 13, 2004

This plat is strictly conformable to the approved field notes, and the survey, having been correctly executed in accordance with the requirements of law and the regulations of this Bureau, is hereby accepted.

For the Director
Mary J. M. Hantel
Chief Cadastral Surveyor of Oregon