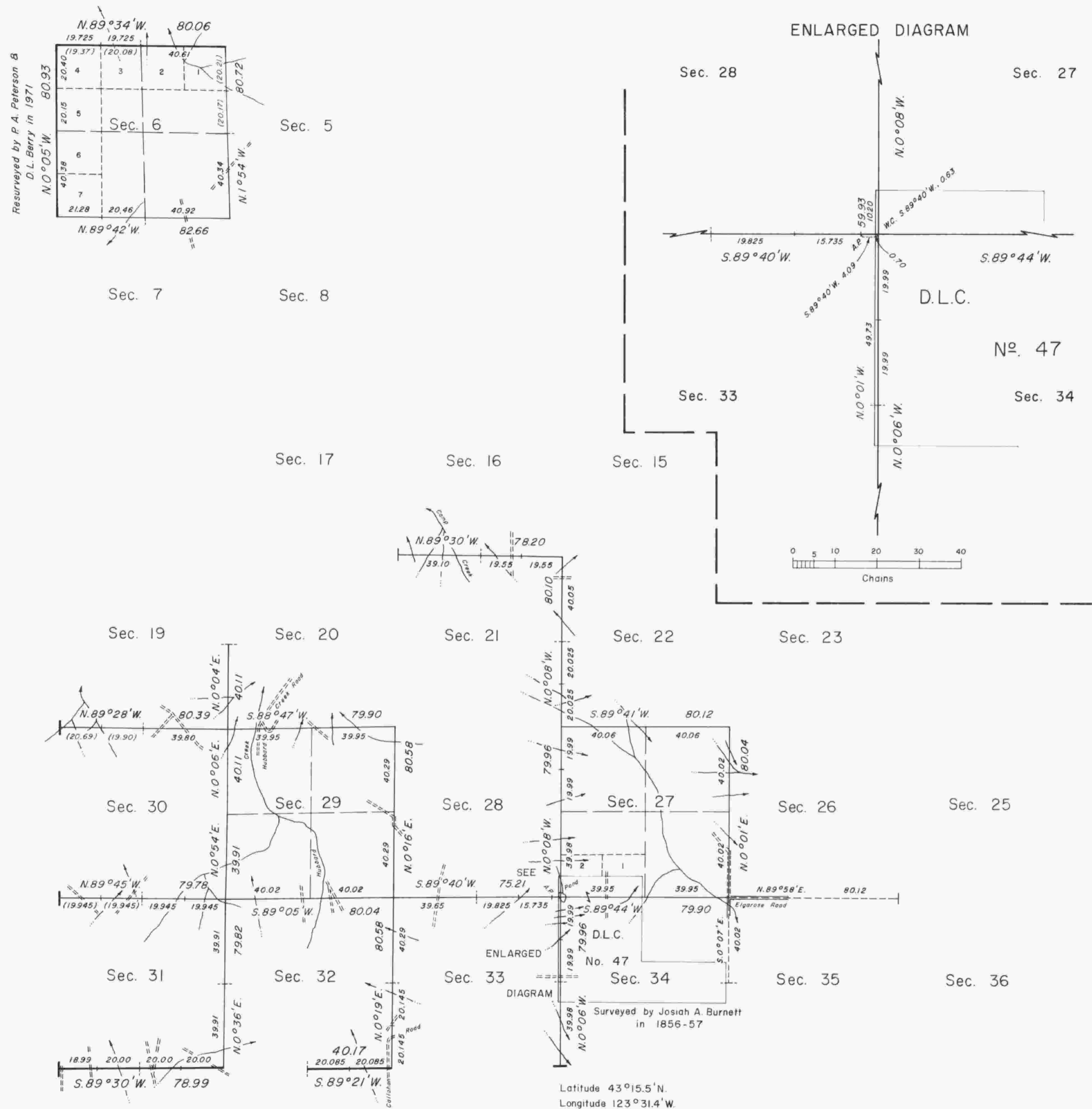


TOWNSHIP 26 SOUTH, RANGE 7 WEST, OF THE WILLAMETTE MERIDIAN, OREGON. DEPENDENT RESURVEY



A history of surveys is contained in the field notes.

This plat represents a dependent resurvey of a portion of the south and north boundaries, a portion of the subdivisional lines and claim lines, T. 26 S., R. 7 W., Willamette Meridian, Oregon designed to restore the corners in their true original location according to the best available evidence.

The lottings and areas are as shown on the plats approved July 7, 1856, October 22, 1860, and January 14, 1882.

The resurvey was executed by Peter A. Peterson, Daniel L. Berry, Gurdon S. Popken and Harvey E. Wofford, Cadastral Surveyors from May 25, 1971 to August 13, 1974 under Special Instructions dated May 4, 1971 and May 10, 1974, which provided for the surveys included under Group Nos. 744 and 838, Oregon.

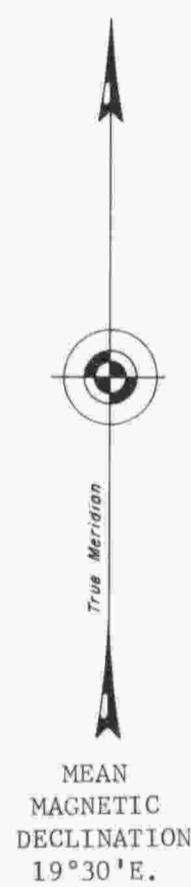
UNITED STATES DEPARTMENT OF THE INTERIOR
BUREAU OF LAND MANAGEMENT
Washington, D.C. May 12, 1977

This plat is strictly conformable to the approved field notes, and the survey, having been correctly executed in accordance with the requirements of law and the regulations of this Bureau, is hereby accepted.

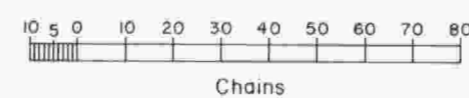
For the Director

Roger T. Barron

Acting Chief, Division of Cadastral Survey



Timber in this area consists of fir, cedar, hemlock, oak, alder, madrone, maple and chinquapin.



Latitude 43°15.5'N.
Longitude 123°31.4'W.