

# TOWNSHIP 26 SOUTH, RANGE 7 WEST, OF THE WILLAMETTE MERIDIAN, OREGON.

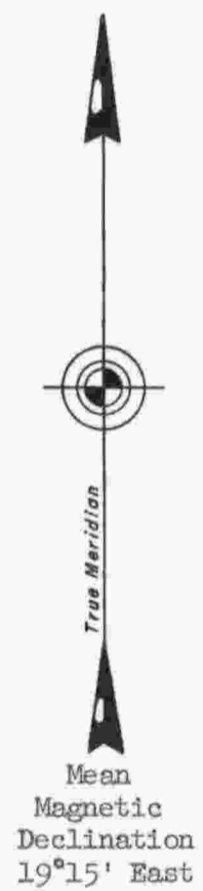
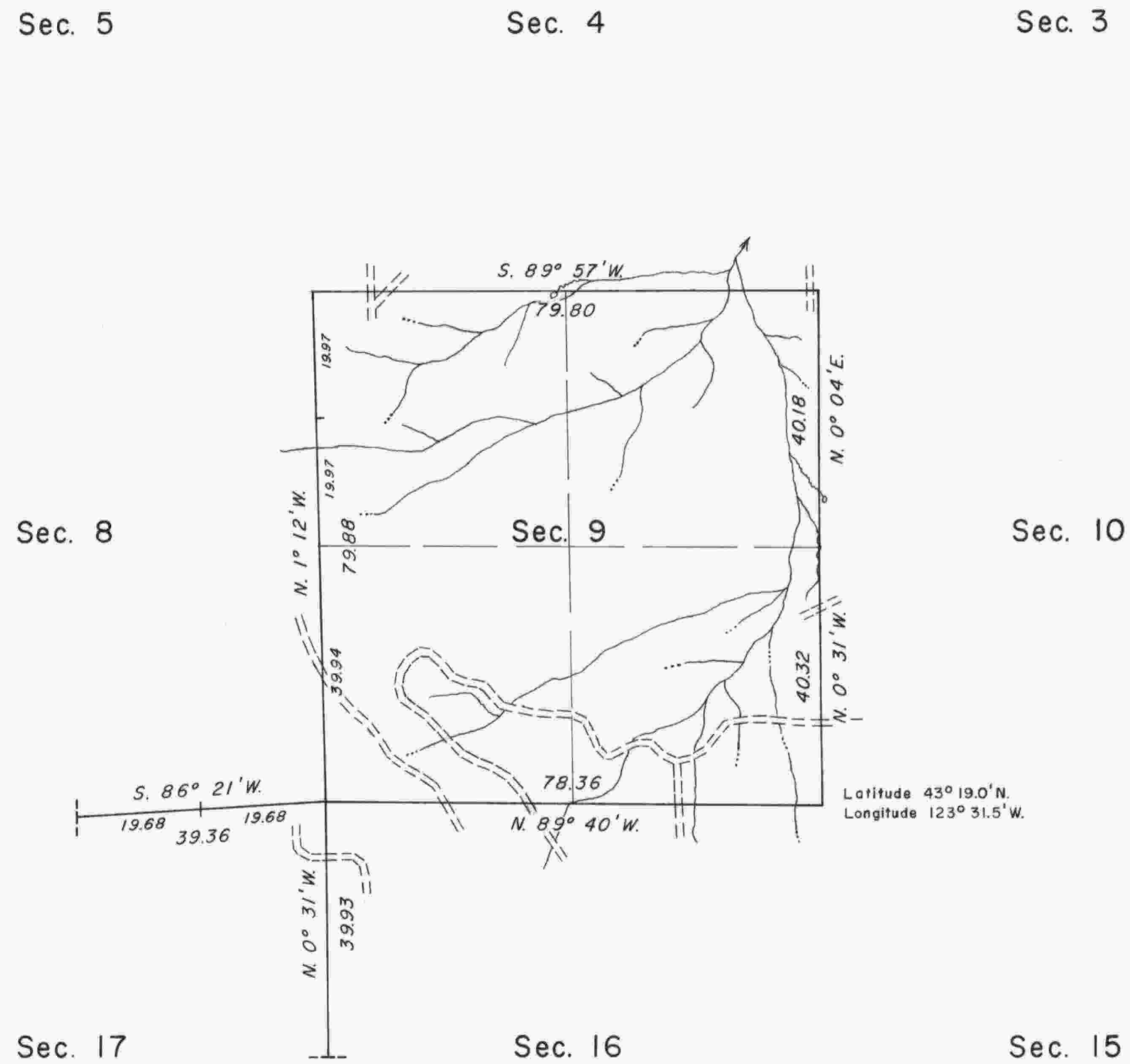
DEPENDENT RESURVEY

This plat represents a retracement and reestablishment of a portion of the subdivisional lines, T. 26 S., R. 7 W., Willamette Meridian, Oregon, designed to restore the corners in their true original locations according to the best available evidence.

The areas are as shown on the plats approved July 7, 1856, and January 14, 1882.

A portion of the subdivisional lines was surveyed by Dennis Hathorn in 1855. In 1881, Addison R. and Samuel C. Flint completed the survey of the subdivisional lines. In 1963, Donald R. Beck remonumented the corner of sections 9, 10, 15, and 16, and the quarter section corner of sections 9 and 10.

The resurvey was executed by Lynn M. Roseberry, Cadastral Surveyor, and Albert J. Garrison, Surveying Technician, June 21 to August 17, 1967, under Special Instructions dated September 24, 1957, which provide for the surveys included under Group No. 357, Oregon.

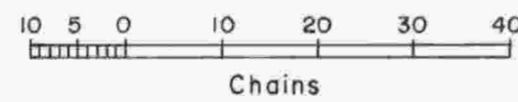


UNITED STATES DEPARTMENT OF THE INTERIOR  
BUREAU OF LAND MANAGEMENT  
Washington, D. C. April 24, 1970

This plat is strictly conformable to the approved field notes, and the survey, having been correctly executed in accordance with the requirements of law and the regulations of this Bureau, is hereby accepted.

For the Director

Chief, Division of Cadastral Survey



Area resurveyed: 640.00 Acres

Timber in this area consists of fir, hemlock, cedar, alder, madrone, maple, yew, chinquapin, and oak.