

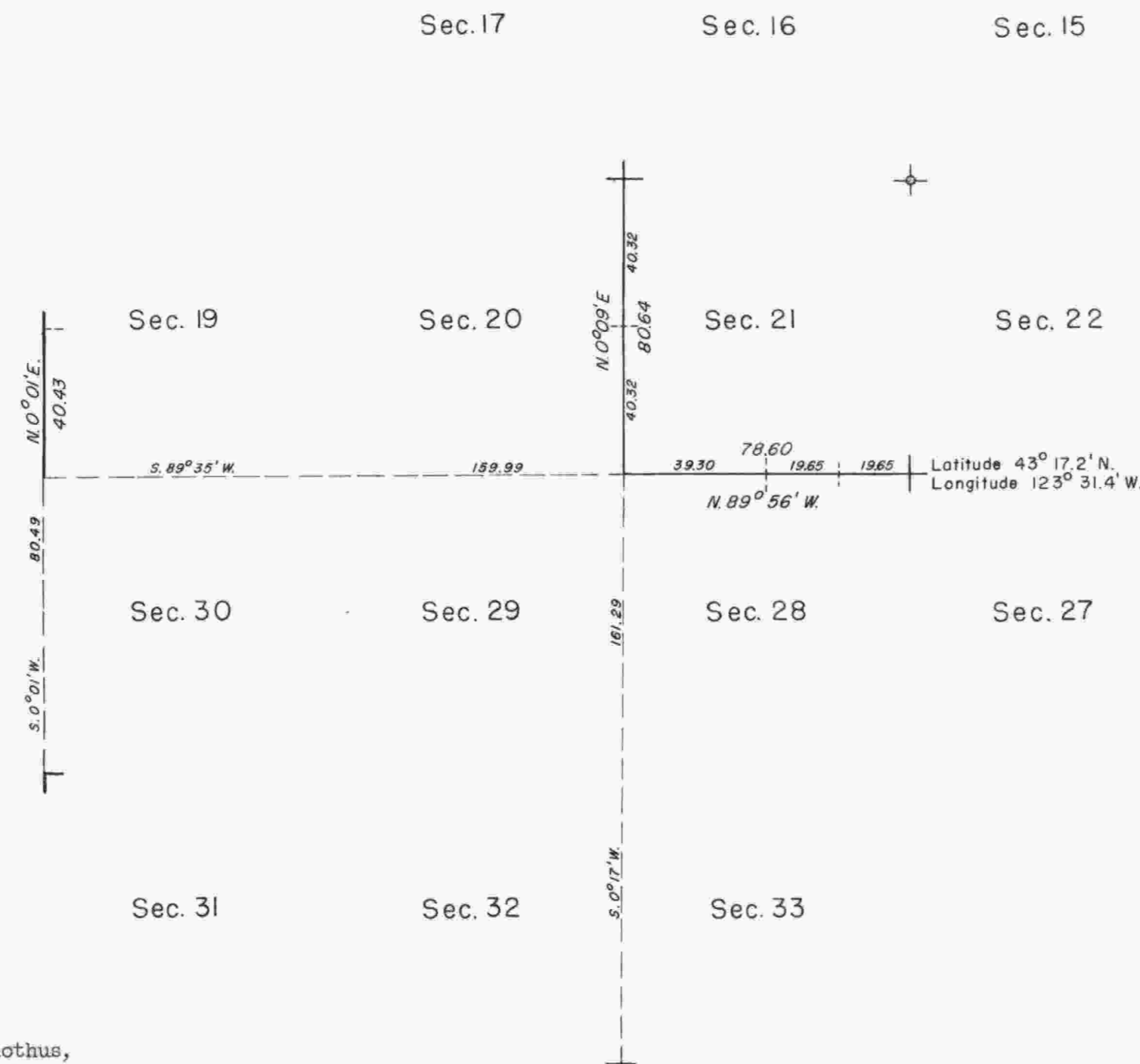
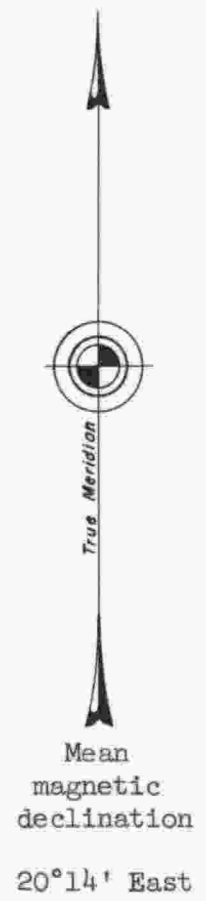
# TOWNSHIP 26 SOUTH, RANGE 7 WEST, OF THE WILLAMETTE MERIDIAN, OREGON. DEPENDENT RESURVEY

This plat represents a retracement and re-establishment of a portion of the west boundary and a portion of the subdivisional lines, and remonumentation of corners as indicated, designed to restore the corners in their true original location according to the best available evidence.

The west and south boundaries and a portion of the subdivisional lines surveyed by Dennis Hathorn in 1856.

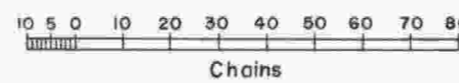
A portion of the south boundary and west boundary resurveyed and a survey of the subdivisional lines by A. R. and S. C. Flint in 1881.

Dependent resurvey of a portion of the west boundary and a portion of the subdivisional lines of T. 26 S., R. 7 W., Will. Mer., Oregon, executed by Irving Zirpel, Jr., and Leo J. Martin, April 22 to May 14, 1959, under Special Instructions dated May 3 and September 24, 1957, which provide for the surveys included under Group Nos. 350 and 357, Oregon.



No timber, undergrowth in this area consists of ceanothus, willow, madrone, manzanita, poison oak, salal, huckleberry, gooseberry, blackberry, chinquapin and ocean spray.

o Additional corners remonumented in 1959



UNITED STATES DEPARTMENT OF THE INTERIOR  
BUREAU OF LAND MANAGEMENT  
Washington, D.C. April 15, 1960

This plat is strictly conformable to the approved field notes, and the survey, having been correctly executed in accordance with the requirements of law and the regulations of this Bureau, is hereby accepted.

For the Director

Cadastral Engineering Staff Officer