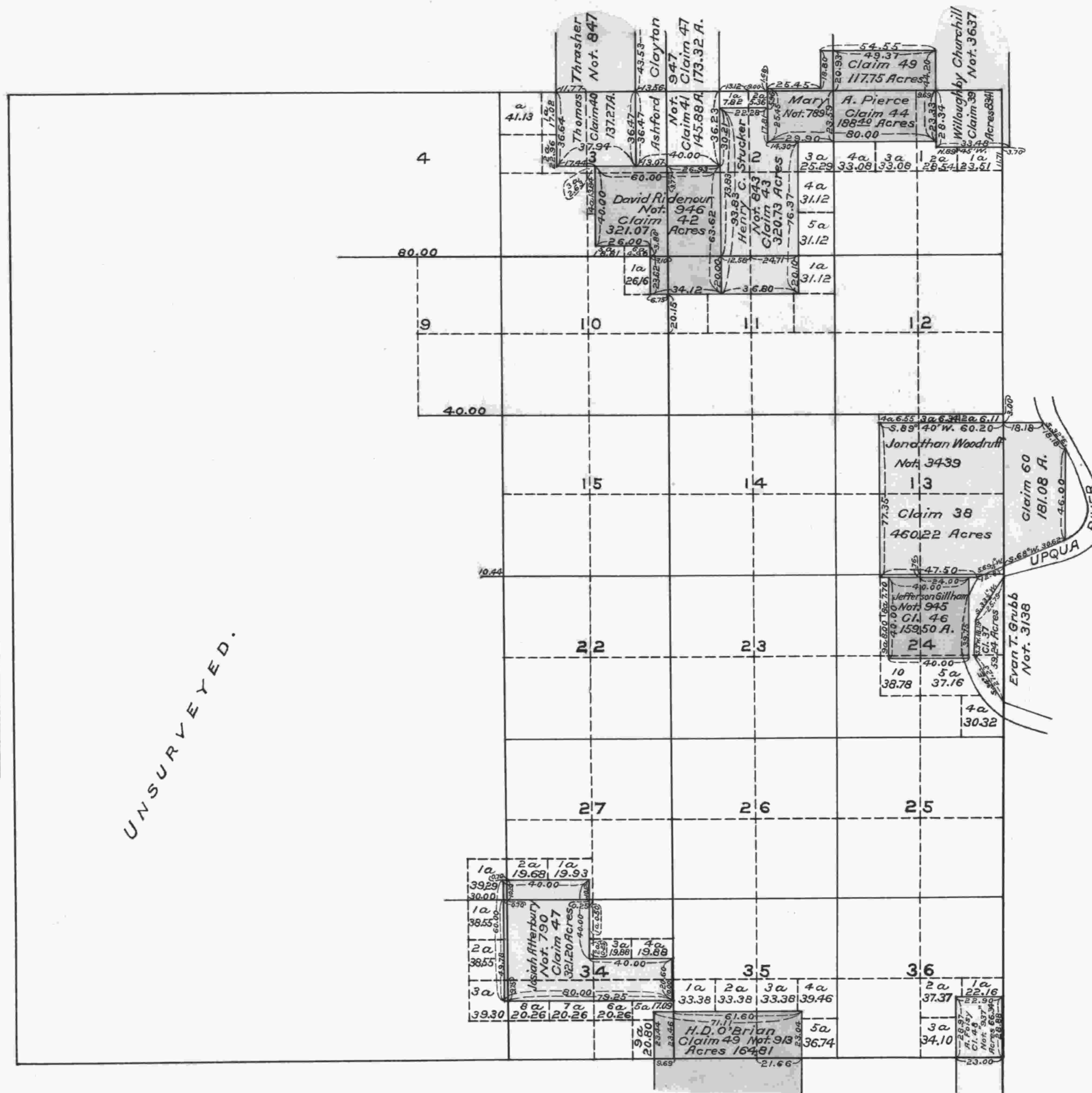


TOWNSHIP N<sup>o</sup> 26 SOUTH RANGE N<sup>o</sup> 7 WEST WILLAMETTE MERIDIAN

Aggregate Area of Public lands 9,504.46  
 " " Private Surveys 2,428.07  
 Add error in computation 17.30  
 Total return on Township plat 11,789.83  
 not returned on Township plat 160.00

UNSURVEYED.

The above Map of the survey of Claims in Township No 26 South Range No. 7 West of the Willamette Meridian, Oregon, is strictly conformable to the field notes of the surveys thereof on file in this Office, which have been examined and approved  
 Surveyor General's Office  
 Eugene City, Oct. 22nd, 1860

(Signed)  
 W. W. Chapman  
 Surveyor Gen. of Oregon.

Public Survey Office,  
 Portland, Oregon,  
 November 20, 1930.

I certify the above to be a correct copy of the original plat on file in this office.

Joseph A. Murray,  
 Office Cadastral Engineer.