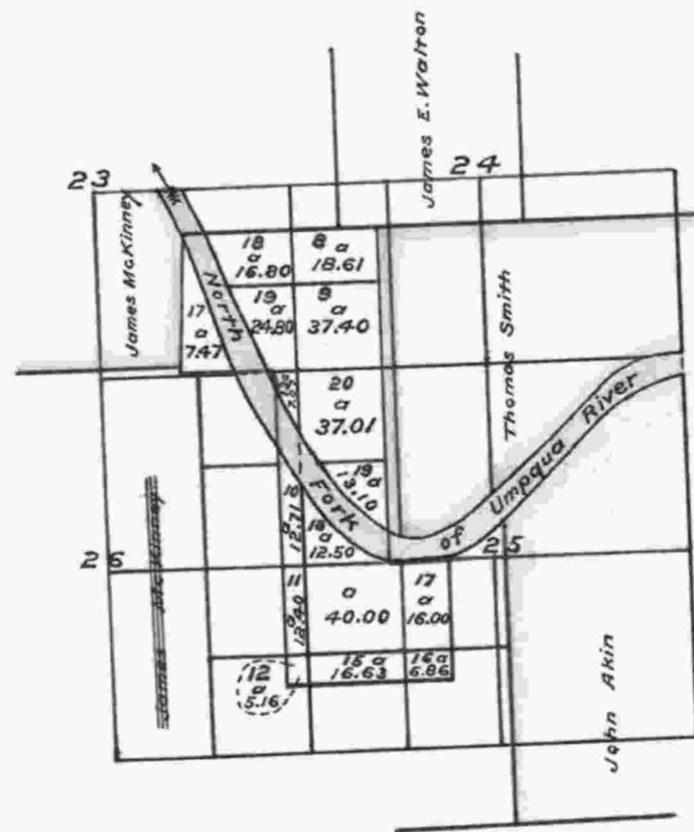


Township N°26 South Range N°6 West of the Willamette Meridian, Oregon.



The above special plat, showing the acreage and lottings consequent upon the cancellation of the Donation Land Claim of Margarette Ingles in Sec's. 23, 24, 25 and 26, T. 26 S. R. 6 W. Will. Mer. Oregon is correct and is hereby approved.
 U.S. Surveyor General's Office } (signed)
 Portland, Oregon, Sept. 26, 1879 } James C. Tolman
 Sur. Gen. of Or.

I certify the above to be a correct copy of the original special plat on file in this office.
 U.S. Surveyor General's Office }
 Portland, Oregon, Sept. 20, 1919 }

Edward E. Worth
 Surveyor General
 of Oregon