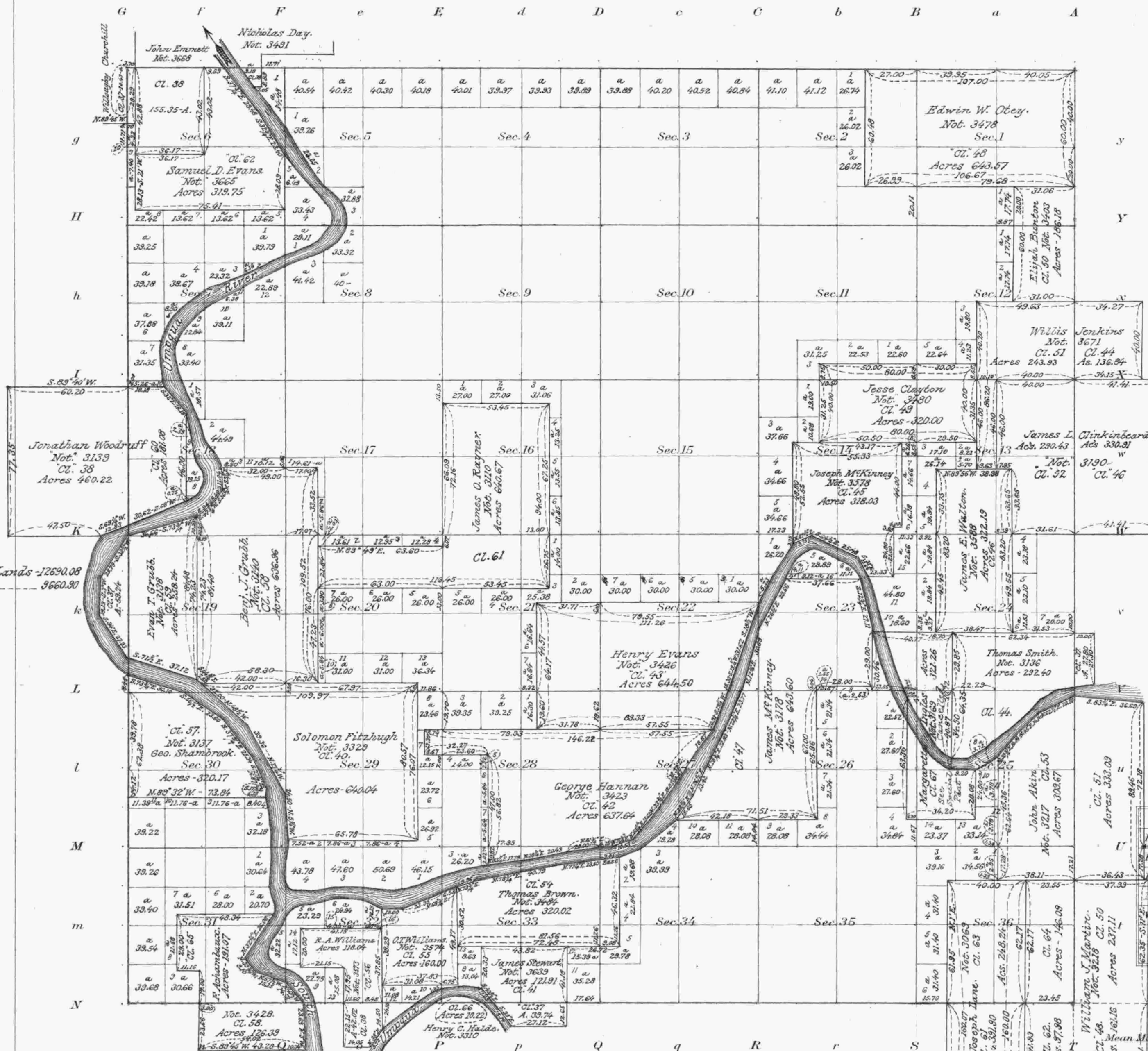


# Township No 26 South Range No 6 West of the Willamette Meridian, Oregon.



Meanders of Claim 39  
Nicholas Day.  
Beginning at the S.W. Corner  
N. 45° W. - 1.42 Chs.  
N. 36° 30' W. - 9.60 - to T.P. line.

Meanders of CL. 44 Thomas Smith  
beginning at the S.W. Corner.  
East 8.35 chains  
N. 59° E. 11.66 chains  
N. 51 1/4° E. 12.81  
N. 45° E. 7.07  
N. 53° E. 5.00  
N. 45° E. 8.48  
N. 45° E. 2.83  
N. 56° E. 3.61  
N. 53 1/2° E. 5.00  
N. 84 1/4° E. 20.10 to S.E. Cor. CL. 37.

The above Map of the Survey of Claims in  
Township No 26 South, Range No 6 West of the  
Willamette Meridian, Oregon, is strictly Con-  
formable to the field notes of the Surveys there-  
of on file in this Office which have been ex-  
amined and approved.  
Surveyor General's Office,  
Eugene City, October 3<sup>rd</sup>, 1860.

W W Chapman  
Sur Gen.

Areas in Acres	
Public Land	4.36
Indian Reservation	
Indian Allotments	
Mineral Claims	
Water Surface	
<b>Total Area</b>	

Scale 40 Chains to an inch  
Mean Magnetic Declination

Surveys Designated	By Whom Surveyed	Contract		Amount of Surveys			When Surveyed	
		No.	Date	Mls.	chs.	lks.	Begun	Completed

I certify the above to be a correct copy of  
the Original Plat on file in this Office.  
U.S. Surveyor General's Office.  
Portland, Oregon September 27<sup>th</sup> 1860.  
Edward C. Wall  
Surveyor General of Oregon.

The above map of Township No. \_\_\_\_\_ of the  
Meridian \_\_\_\_\_ is strictly conformable to the field notes of the survey thereof on file  
in this office, which have been examined and approved  
U. S. Surveyor General's Office.  
Surveyor General.