

# TOWNSHIP 26 SOUTH, RANGE 5 WEST, OF THE WILLAMETTE MERIDIAN, OREGON

## DEPENDENT RESURVEY AND SUBDIVISION OF SECTIONS 2 AND 13

FILED  
 Date: 9/9/2011 By: JC  
 This survey consists of:  
 Map: VOL 57  
 Narrative: PAGES  
 Corner Rpt: 22446-22464  
 DOUGLAS COUNTY  
 SURVEYOR

A history of surveys is contained in the field notes.

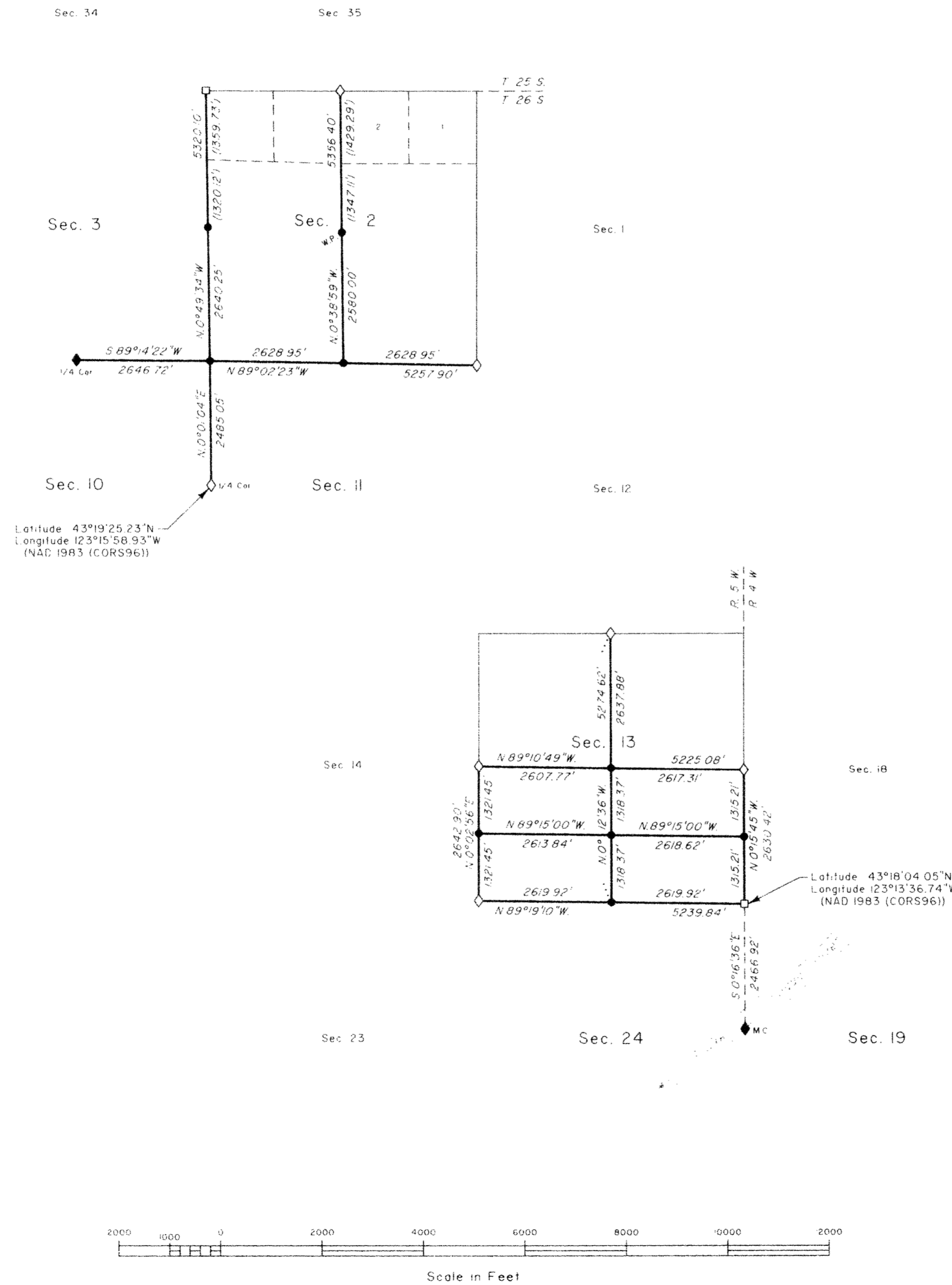
This plat represents the dependent resurvey of portions of the east boundary and subdivisional lines, T. 26 S., R. 5 W., Willamette Meridian, Oregon, designed to restore the corners in their true original locations according to the best available evidence, and the subdivision of sections 2 and 13.

The survey was performed utilizing both conventional (directly measured angles and distances) and NAVSTAR Global Positioning System (GPS) satellite techniques. The GPS measurements utilized dual frequency, carrier phase GPS receivers. The baselines were computed and adjusted by least squares analysis. Conventionally measured distances and directions have been adjusted by computer software that incorporates a least squares adjustment routine. The adjusted bearings and distances are reported to the nearest second and 0.01 foot.

The lottings and areas are as shown on the plat approved September 9, 1853.

The survey was executed by Timothy J. Moore, and A. Bert Skeesick, Cadastral Surveyors, and Robert H. Browning, Surveying Technician, beginning May 4, 2004, and completed April 4, 2005, pursuant to Special Instructions dated February 2, 2004, under Group Number 2065, Oregon.

OFFICIALLY FILED:



LEGEND	
◊	Original corner previously remonumented
◆	Original corner remonumented this survey
□	Corner previously established or reestablished
●	Corner established or reestablished this survey

UNITED STATES DEPARTMENT OF THE INTERIOR  
 BUREAU OF LAND MANAGEMENT

Portland, Oregon

This plat is strictly conformable to the approved field notes, and the survey, having been correctly executed in accordance with the requirements of law and the regulations of this Bureau, is hereby accepted.

For the Director

Chief Cadastral Surveyor of Oregon

Date