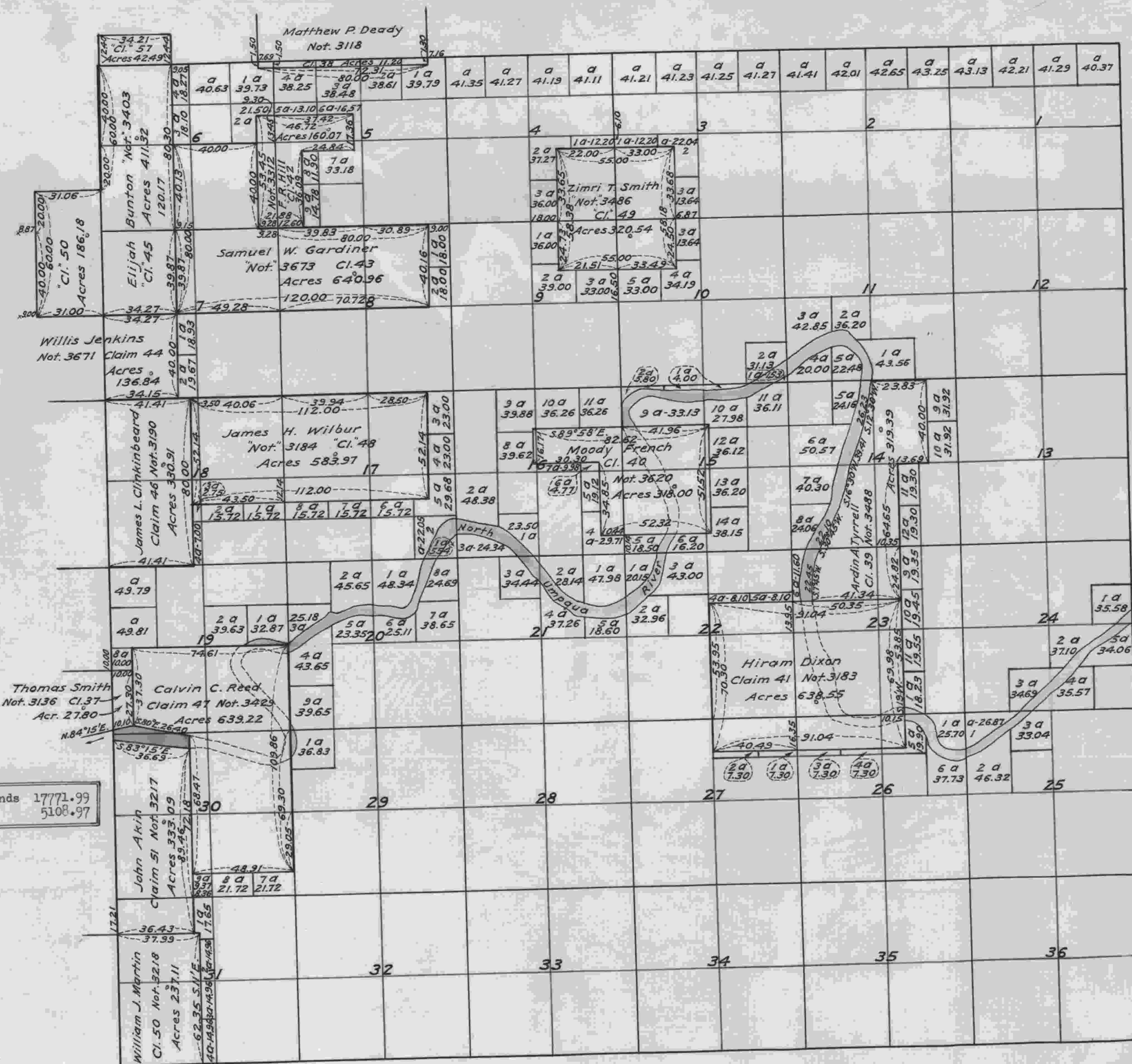


Township No. 26 South, Range No. 5 West of the Willamette Meridian, Oregon.



Aggregate Area of Public Lands 17771.99
5108.97

The above Map of the Survey of Claims in Township No. 26 South, of Range No. 5 West of the Willamette Meridian, Oregon, is strictly conformable to the field notes of the Surveys thereof on file in this Office, which have been examined and approved.
Surveyor General's Office, Ogn., Eugene City, August 1st, 1860.

(signed) W. W. Chapman.
Surveyor General of Oregon.

I certify this to be a correct copy of the original plat on file in this Office,
Office of District Cadastral Engineer,
Portland, Oregon, October 31, 1925.

E. P. Harms
District Cadastral Engineer.