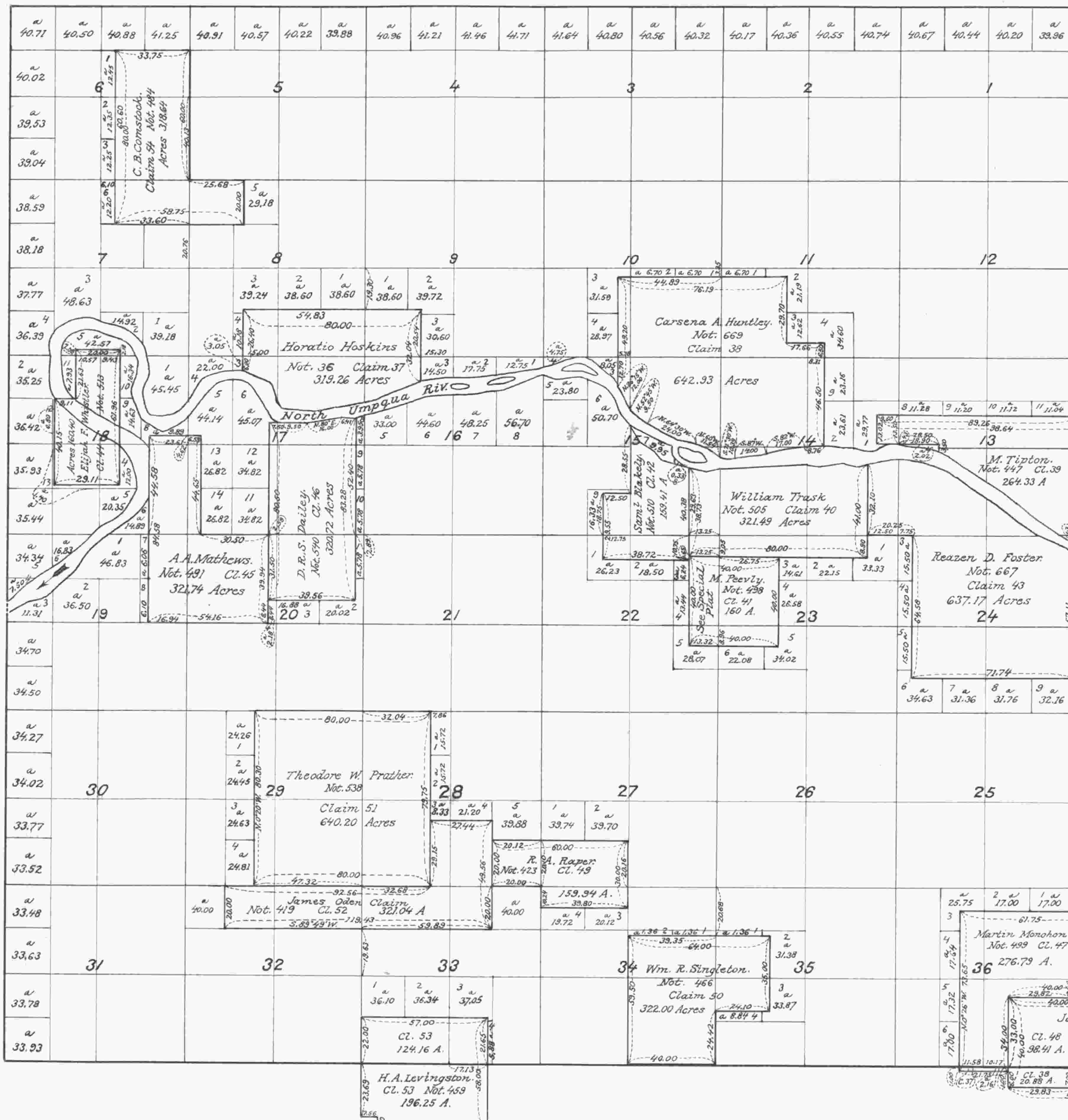


Township N^o 26 South Range N^o 4 West of the Willamette Meridian, Oregon.



Meanders of Cl. 37
 S. 66°30' W. 25.12 Chs.
 S. 81° W. 15.00 "
 S. 74° W. 7.50 "
 N. 88° W. 17.50 "
 N. 23°30' W. 13.00 "
 N. 35° W. 5.00 "
 N. 70° W. 7.50 "
 N. 69°30' W. 2.50 "

Meanders of Cl. 39
 N. 59° W. 4.00 Chs.
 N. 60° W. 8.00 "
 N. 61° W. 2.00 "
 N. 53°30' W. 4.50 "
 N. 59° W. 15.00 "

Meanders of Cl. 43
 N. 81° E. 12.40 Mr. Post
 S. 85°15' E. 18.00 Chs.
 S. 68° E. 5.00 "
 S. 53° E. 2.00 "
 S. 52° E. 6.00 "
 S. 54° E. 41.00 "
 S. 65° E. 2.50 "
 S. 51° E. 0.65 " Mr. post
 S. 51° E. 5.35 "
 S. 67° E. 11.65 " to Mr. post

Meanders of Cl. 42
 N. 70° W. 14.00 Chs.
 N. 40° W. 4.00 "
 N. 53° W. 7.00 "
 N. 40° W. 7.65 "

Meanders of Claim 40 Wm. Trask beg. at N.E. Cor. left bank down stream.
 West 5.50 Chains
 N. 78°00' W. 4.00 "
 S. 85° W. 7.00 "
 S. 78° W. 4.00 "
 N. 73° W. 7.50 "
 S. 85° W. 35.00 "
 S. 81° W. 4.00 " 10.00" to Meander post
 S. 81° W. 6.00 "
 N. 80° W. 8.00 " to place of beginning

Aggregate Area of Public lands 17014.08
 Private Surveys 5568.63
 Deduct error in computation 46.41
 Total return on Township plat 22536.30

I certify the above to be a correct copy of the original plat on file in this Office.
 U.S. Surveyor General's Office,
 Portland, Oregon December 17, 1921.

Wesley W. Cairness
 Surveyor General of Oregon.

Scale 40 Chains to an inch
 Mean Magnetic Declination

Surveys Designated	By Whom Surveyed	Group			When Surveyed	
		No.	Date	Amount of Surveys Mls. chs. lks.	When Surveyed Began Completed	

The above map of Township No. 26 South Range No. 4 West of the Willamette Meridian Oregon is strictly conformable to the field notes of the survey thereof on file in this office, which have been examined and approved.

Surveyor General's Office.
 Eugene City April 13th 1861.
 W. W. Chapman
 Surveyor General of Oregon.