

TOWNSHIP 26 SOUTH, RANGE 3 WEST, OF THE WILLAMETTE MERIDIAN, OREGON

DEPENDENT RESURVEY

FILED
Date: 6/19/2019 By: JC
This survey consists of:
Map: PLAT: T26-3W 2019-1
Narrative: VOL. 59
Corner Rpt: PGS 23628-23635

DOUGLAS COUNTY
SURVEYOR

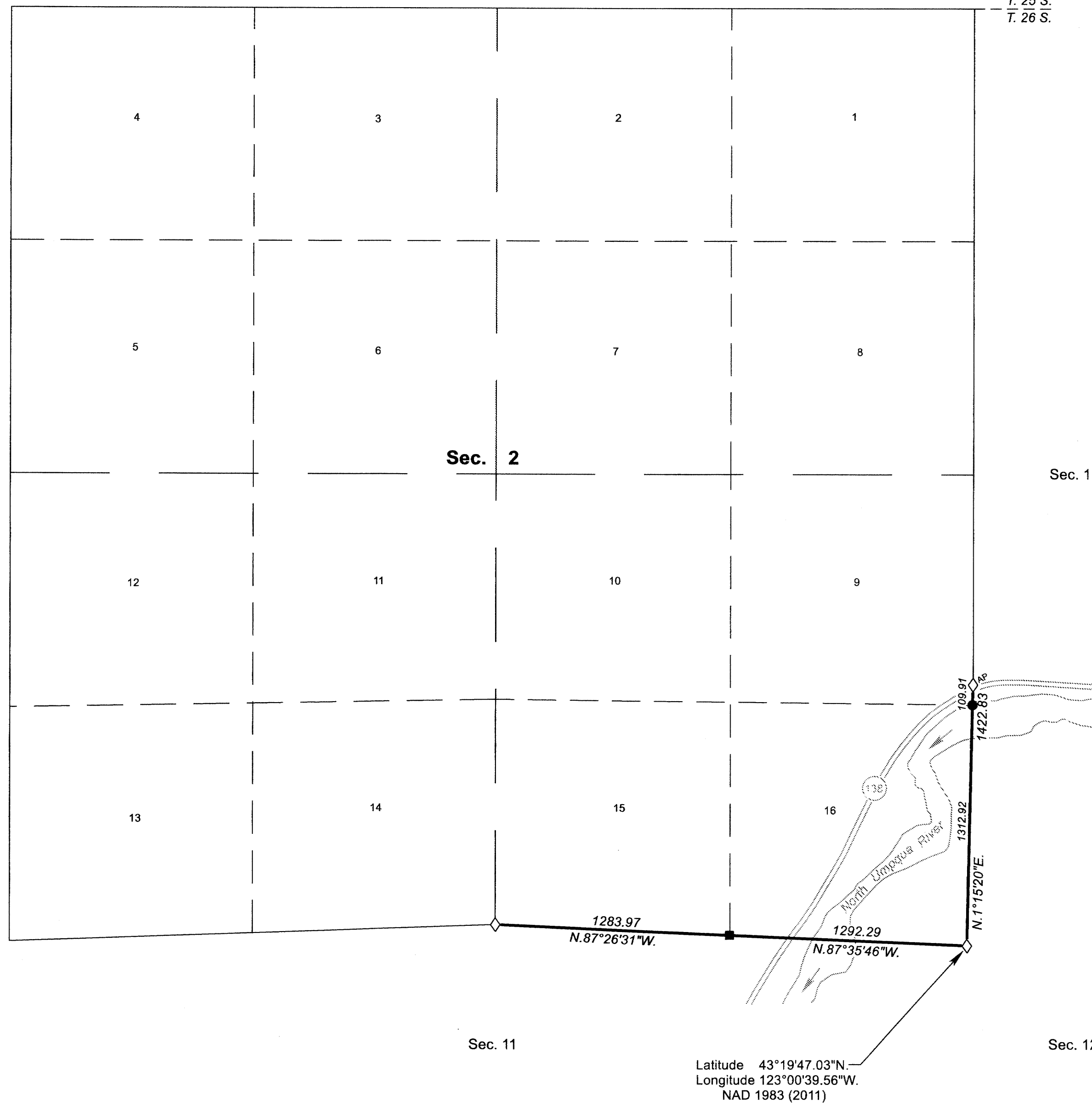
A history of surveys, corner descriptions, and other relevant information are contained in the field notes.

This plat represents the dependent resurvey of a portion of the subdivisional lines, designed to restore the corners in their true original locations according to the best available evidence, Township 26 South, Range 3 West, Willamette Meridian, Oregon.

The lottings and areas are as shown on the plat approved October 23, 1882.

Survey executed by Jeffery O. Covington, Cadastral Surveyor, beginning February 23, 2016, and completed March 3, 2016, pursuant to special instructions approved February 22, 2016, for Group No. 2822, Oregon.

OFFICIALLY FILED: 5/16/2019



LEGEND

- ◇ Original corner previously remonumented
- Corner previously established or reestablished; remonumented this survey
- Corner established or reestablished this survey

UNITED STATES DEPARTMENT OF THE INTERIOR
BUREAU OF LAND MANAGEMENT
Portland, Oregon

This plat is strictly conformable to the approved field notes, and the survey, having been correctly executed in accordance with the requirements of law and the regulations of this Bureau, is hereby accepted.

For the Director
Maury J. M. Hartzel
Chief Cadastral Surveyor of Oregon

February 1, 2019
Date

