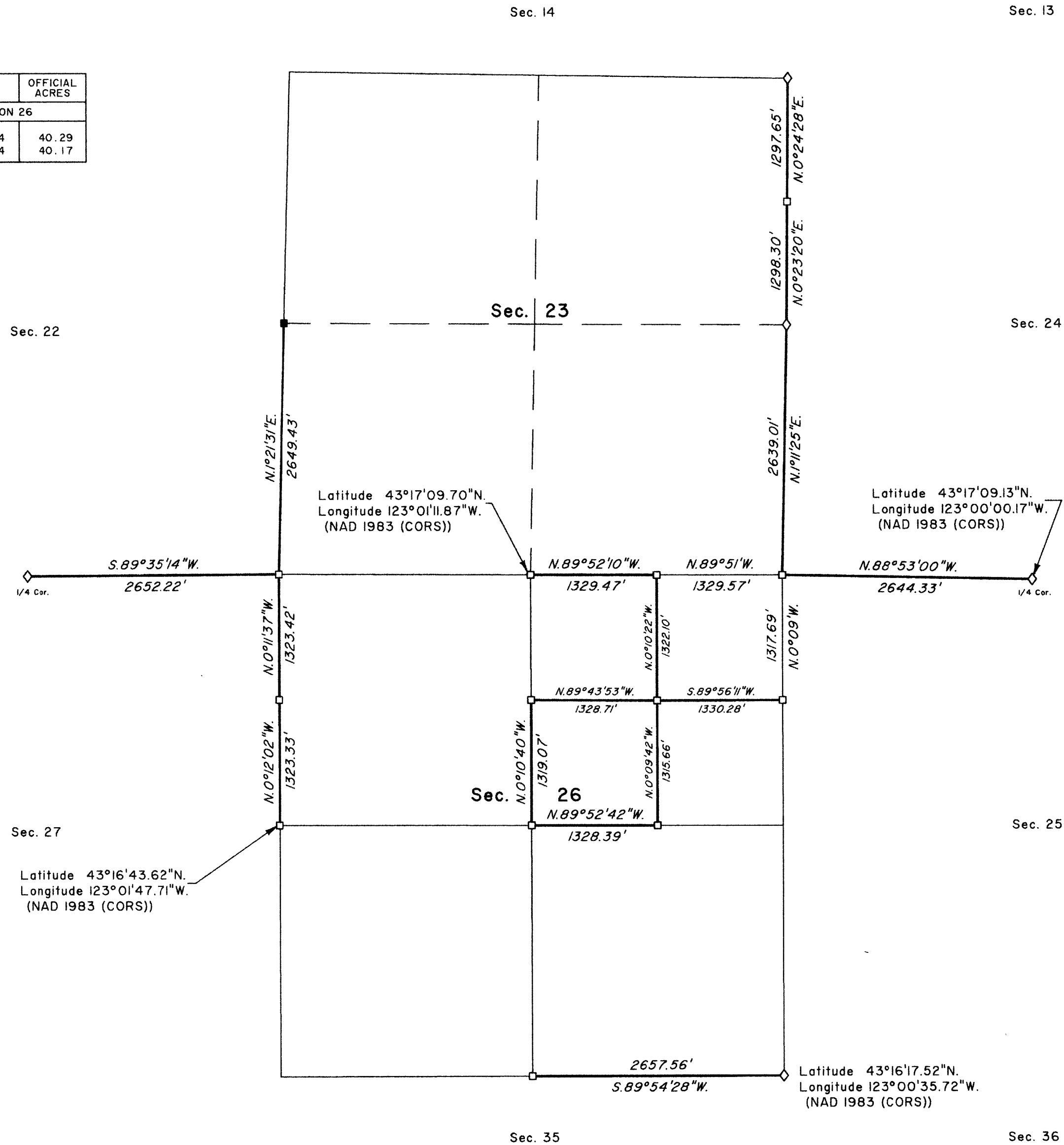


TOWNSHIP 26 SOUTH, RANGE 3 WEST, OF THE WILLAMETTE MERIDIAN, OREGON

DEPENDENT RESURVEY

FILED
 Date: 12/13/2011 By: JC
 This survey consists of:
 Map: T26S R3W 2011-1
 Narrative: VOL 57
 Corner Rpt: PGS 22892-22714
 DOUGLAS COUNTY
 SURVEYOR

| LEGAL SUBDIVISION | OFFICIAL ACRES |
|-------------------|----------------|
| SECTION 26 | |
| NE 1/4 NE 1/4 | 40.29 |
| SW 1/4 NE 1/4 | 40.17 |



A history of surveys is contained in the field notes.

This plat represents a dependent resurvey of a portion of the subdivisional lines and subdivision of section lines in section 26, T. 26 S., R. 3 W., Willamette Meridian, Oregon, designed to restore the corners in their true original locations according to the best available evidence.

Actual quantity acreages have been returned for Federal interest lands where indicated. Changes in the official acreage of land described by aliquot part or lot number do not alter its description. Further subdivision of aliquot parts shall be in accordance with the Manual. Further subdivision of official lots may only be by supplemental plat or official survey. Official acreage and lot designations of Federal interest lands not affected by this survey are as shown on the plats approved March 26, 1872, and October 23, 1882.

The survey was executed by A. Bert Skeesick, Cadastral Surveyor, and Robert H. Browning, Surveying Technician, beginning July 8, 2009, and completed November 12, 2009, pursuant to Special Instructions dated April 21, 2009, under Group Number 2273, Oregon.

Notes:
The lightweight lines with bearing and distance shown were surveyed by Daniel L. Berry, G. Steven Popken, and James J. Carlson, Cadastral Surveyors, in 1972-75.

LEGEND

- ◊ Original corner previously remonumented
- Corner previously established or reestablished
- Corner previously established or reestablished; remonumented this survey

UNITED STATES DEPARTMENT OF THE INTERIOR
BUREAU OF LAND MANAGEMENT

Portland, Oregon

This plat is strictly conformable to the approved field notes, and the survey, having been correctly executed in accordance with the requirements of law and the regulations of this Bureau, is hereby accepted.

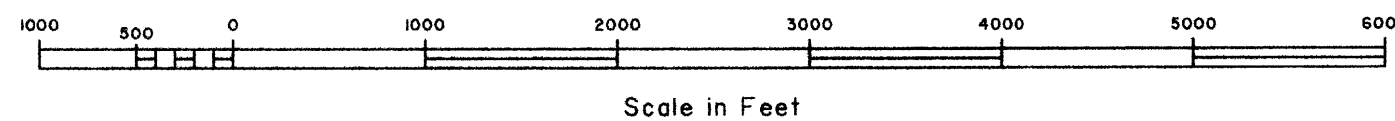
For the Director

Mary J. M. Havel

Chief Cadastral Surveyor of Oregon

September 29, 2011

Date



Scale in Feet

OFFICIALLY FILED: 10/17/2011