

TOWNSHIP 26 SOUTH, RANGE 3 WEST, OF THE WILLAMETTE MERIDIAN, OREGON

DEPENDENT RESURVEY AND SUBDIVISION OF SECTION 3

FILED

Date: 1-14-1999 By: JR

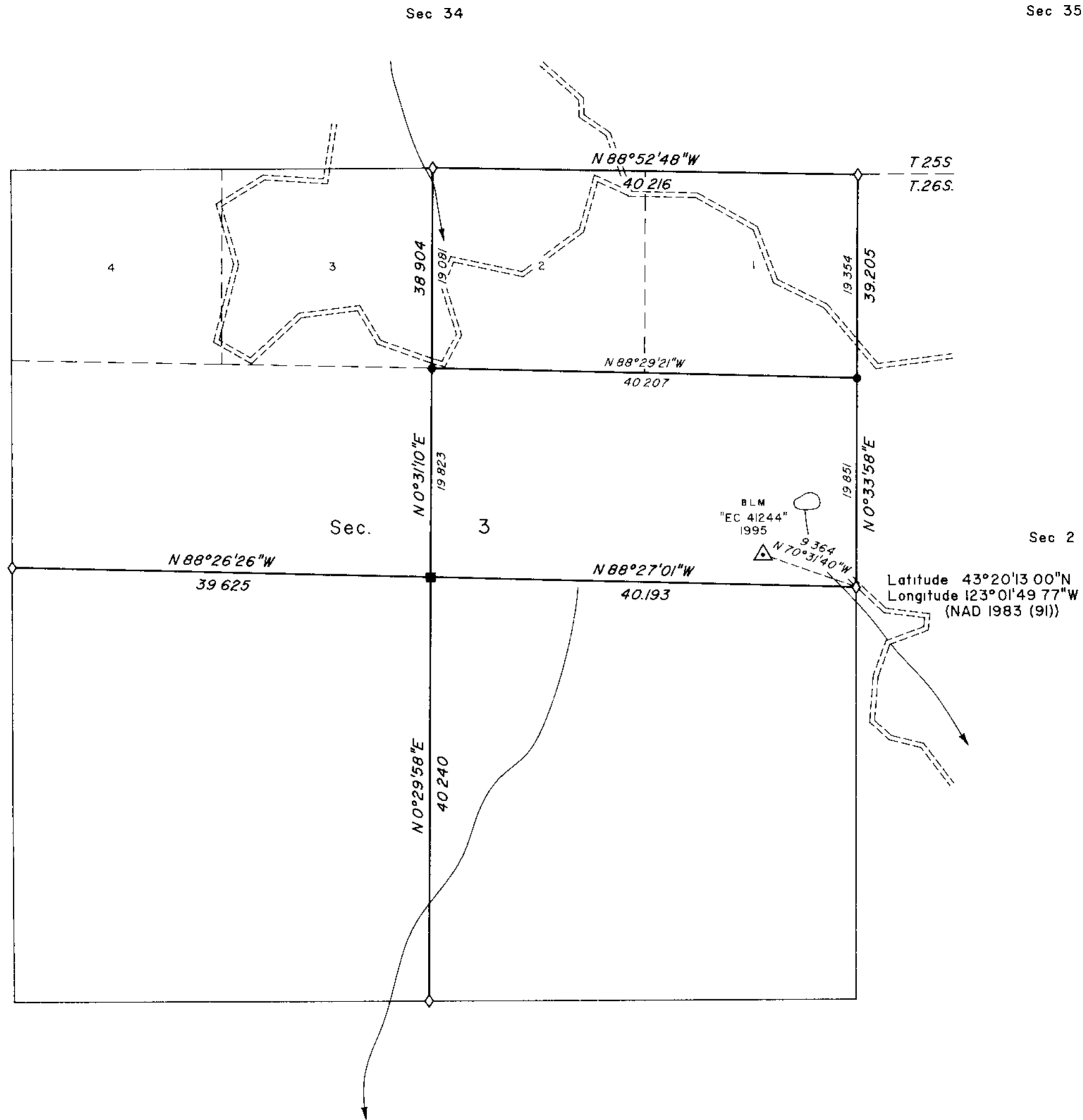
This survey consists of:

Map: VOL 52

Narrative: Pgs. 19885-

Corner Rpt: 19893

DOUGLAS COUNTY
SURVEYOR



A history of surveys is contained in the field notes

This plat represents a dependent resurvey of a portion of the north boundary and subdivisional lines, T 26 S, R 3 W, Willamette Meridian, Oregon, designed to restore the corners in their true original locations according to the best available evidence, and the subdivision of section 3

Measured distances and directions have been adjusted by Cadastral Measurement Management (CMM), a computer program that incorporates a least squares adjustment routine. The adjusted bearings and distances are reported to the nearest second and 0.001 chain

The lottings and areas are as shown on the plat approved October 23, 1882

The survey was executed by Bryan S Seibold, Cadastral Surveyor, and Robert H Browning, Surveying Technician, beginning August 4, 1995, and completed September 11, 1995, pursuant to Special Instructions dated July 17, 1995, under Group Number 1777, Oregon

Timber in this area consists of fir, cedar, yew, pine, hemlock, alder, maple, oak, and madrone

The tie to the geodetic control station is reported as mean bearing and sea level distance

LEGEND

- ◊ Original corner previously remonumented
- Corner previously established or reestablished, remonumented this survey
- Corner established or reestablished this survey

UNITED STATES DEPARTMENT OF THE INTERIOR
BUREAU OF LAND MANAGEMENT

Portland, Oregon

September 2, 1998

This plat is strictly conformable to the approved field notes, and the survey, having been correctly executed in accordance with the requirements of law and the regulations of this Bureau, is hereby accepted

For the Director

Chief Cadastral Surveyor of Oregon

