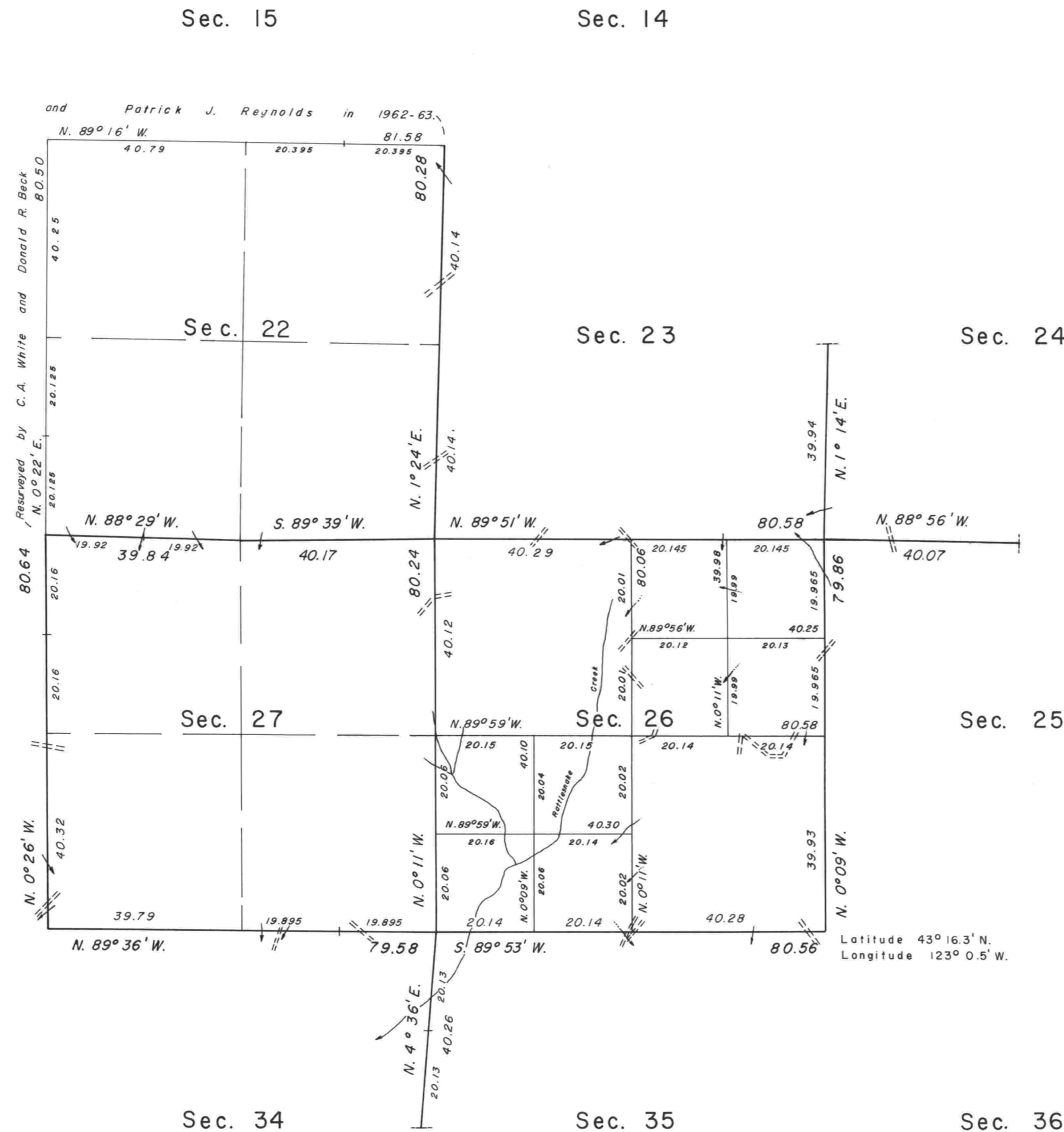


TOWNSHIP 26 SOUTH, RANGE 3 WEST, OF THE WILLAMETTE MERIDIAN, OREGON.
DEPENDENT RESURVEY AND SUBDIVISION OF SECTION



This plat represents a dependent resurvey of a portion of the subdivisional lines, designed to restore the corners in their true original locations according to the best available evidence, and the subdivision of section 26, T. 26 S., R. 3 W., Willamette Meridian, Oregon.

The areas are as shown on the plats approved March 26, 1872, and October 23, 1882.

A portion of the subdivisional lines were surveyed by Addison R. Flint, in 1855.

A portion of the subdivisional lines in the southeast portion of the township were surveyed by Addison R. Flint and L. L. Williams, in 1871.

The survey of the subdivisional lines were completed by Samuel C. Flint, in 1882.

A portion of the subdivisional lines were resurveyed by C. Albert White, Donald R. Beck, and Patrick J. Reynolds, in 1964.

Survey executed by Daniel L. Berry, G. Steven Popken, and James J. Carlson, Cadastral Surveyors, from June 7, 1972 to April 23, 1975, under Special Instructions dated March 10, 1972 and Supplemental Special Instructions dated March 27, 1975, which provided for the surveys included under Group No. 768, Oregon.

UNITED STATES DEPARTMENT OF THE INTERIOR
BUREAU OF LAND MANAGEMENT
Washington, D.C. January 20, 1978

This plat is strictly conformable to the approved field notes, and the survey, having been correctly executed in accordance with the requirements of law and the regulations of this Bureau, is hereby accepted.

For the Director

Roger T. Barron

Acting Chief, Division of Cadastral Survey

Timber in this area consists of fir, cedar, oak, hemlock, maple, yew, madrone, alder, chinquapin, dogwood, and pine.